

# Sky survey reveals newborn jets in distant galaxies

19 November 2020



Artist's conception of a galaxy with an active nucleus propelling jets of material outward from the galaxy's center. Credit: Sophia Dagnello, NRAO/AUI/NSF

Astronomers using data from the ongoing VLA Sky Survey (VLASS) have found a number of distant galaxies with supermassive black holes at their cores that have launched powerful, radio-emitting jets of material within the past two decades or so. The scientists compared data from VLASS with data from an earlier survey that also used the National Science Foundation's Karl G. Jansky Very Large Array (VLA) to reach their conclusion.

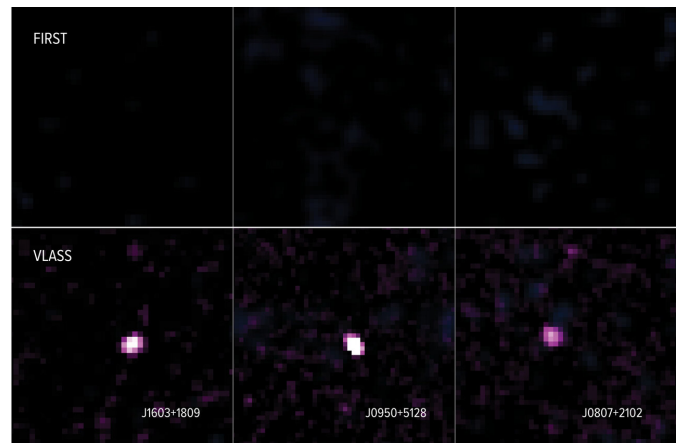
"We found galaxies that showed no evidence of jets before but now show clear indications of having young, compact jets," said Dr. Kristina Nyland, who is an NRC postdoctoral fellow in residence at the Naval Research Laboratory.

"Jets like these can strongly affect the growth and evolution of their galaxies, but we still don't understand all of the details. Catching newborn jets with surveys like VLASS provides a measure of the role of powerful radio jets in shaping the lives of the galaxies over billions of years," Nyland said.

VLASS is a project that will survey the sky visible

from the VLA—about 80 percent of the entire sky—three times over seven years. The observations began in 2017 and the first of the three scans now is complete. Nyland and her colleagues compared data from this scan with data from the FIRST survey that used the VLA to observe a smaller portion of the sky between 1993 and 2011.

They found about 2,000 objects that appear in the VLASS images, but were not detected in the earlier FIRST survey. From these, they selected 26 objects that previously were categorized as galaxies with active nuclei—powered by [supermassive black holes](#)—by optical and [infrared observations](#). The FIRST observations of the 26 objects had been made between 1994 and 2001. The VLASS observations were made in 2019. The intervals between observations of the objects thus ranged from 18 to 25 years.



VLA images of three galaxies in the new study, comparing what was seen in the earlier FIRST survey and the later VLASS. The newly-appearing bright radio emission indicates that the galaxies launched new jets of material sometime between the dates of the two observations. Credit: Nyland et al.; Sophia Dagnello, NRAO/AUI/NSF.

They chose 14 of these galaxies for more detailed observations with the VLA. These observations provided higher-resolution images and also were done at multiple [radio frequencies](#) to get a more complete understanding of the objects' characteristics.

"The data from these detailed observations tell us that the most likely cause of the difference in radio brightness between the FIRST and the VLASS observations is that the 'engines' at the cores of these galaxies have launched new jets since the FIRST observations were made," explained Dillon Dong, from Caltech.

The black holes at the cores of galaxies are known to interact with the galaxies themselves, and the two evolve together. The jets launched from the regions near the black holes can affect the amount of star formation within the galaxy.

"Radio jets provide natural laboratories for learning about the extreme physics of supermassive [black holes](#), whose formation and growth are believed to be intrinsically linked to that of the galaxy centers in which they reside," said Pallavi Patil, of the University of Virginia.

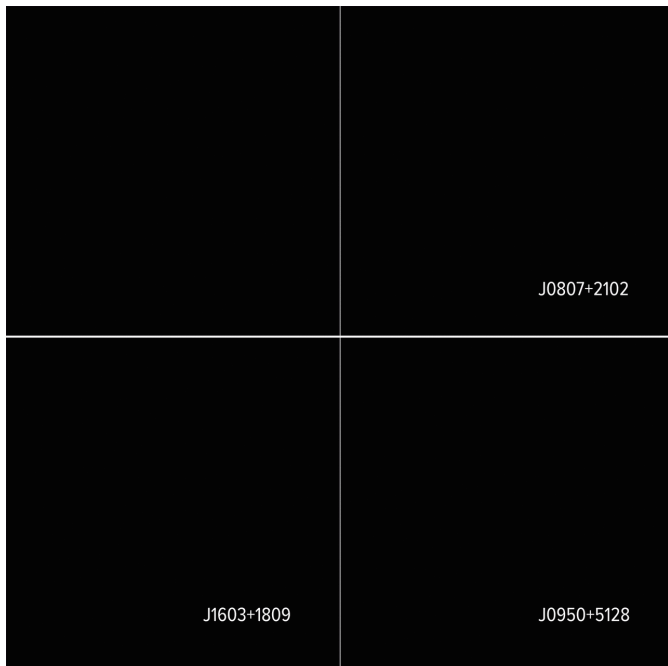
surveys, years apart. The newly-appearing radio emission indicates the galaxies launched new jets of material sometime between the two observations. Credit: Nyland et al.; Sophia Dagnello, NRAO/AUI/NSF.

"Jets as young as the ones discovered in our study can provide us with a rare opportunity to gain new insights on how these interactions between the jets and their surroundings work," Nyland said.

"VLASS has proven to be a key tool for discovering such jets, and we eagerly await the results of its next two observing epochs," said Mark Lacy, of the National Radio Astronomy Observatory.

Nyland and her colleagues plan further studies of the [galaxies](#) using the Very Long Baseline Array (VLBA), the Chandra X-Ray Observatory, and visible-light and infrared telescopes. The paper has been accepted into publication by *The Astrophysical Journal*.

**More information:** "Quasars That Have Transitioned from Radio-Quiet to Radio-Loud on Decadal Timescales Revealed by VLASS and FIRST," Kristina Nyland et al., 2020, to appear in the *Astrophysical Journal*, [arxiv.org/abs/2011.08872](https://arxiv.org/abs/2011.08872)



Provided by National Radio Astronomy Observatory

Animation comparing images as seen by two VLA

APA citation: Sky survey reveals newborn jets in distant galaxies (2020, November 19) retrieved 24 January 2021 from <https://phys.org/news/2020-11-sky-survey-reveals-newborn-jets.html>

*This document is subject to copyright. Apart from any fair dealing for the purpose of private study or research, no part may be reproduced without the written permission. The content is provided for information purposes only.*