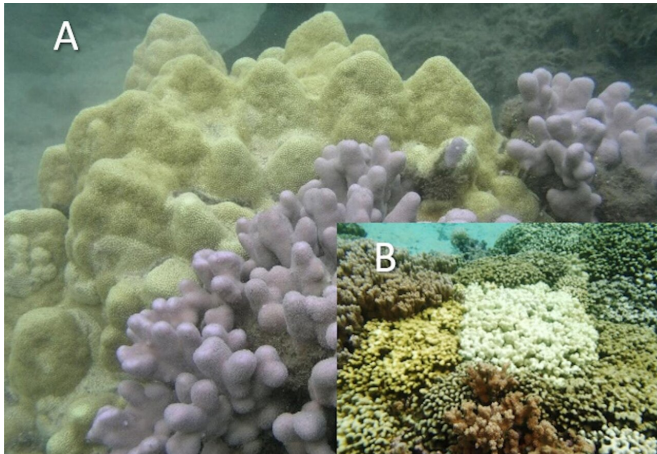


# Genomic data 'catches corals in the act' of speciation and adaptation

2 November 2020, by Marcie Grabowski



A) *Porites lobata* (yellow massive morphology) shown next to *Porites compressa* (blue-grey branching morphology) side by side in the same habitat; (B) example of variation in bleaching susceptibility of *P. compressa* in Kaneohe Bay. Credit: Forsman, et al. (2020)

A new study led by the University of Hawai'i at Mānoa's Hawai'i Institute of Marine Biology (HIMB) revealed that diversity in Hawaiian corals is likely driven by co-evolution between the coral host, the algal symbiont, and the microbial community.

As [coral reef ecosystems](#) have rapidly collapsed around the globe over the past few decades, there is widespread concern that corals might not be able to adapt to changing [climate conditions](#), and much of the biodiversity in these ecosystems could be lost before it is studied and understood. Coral reefs are among the most highly biodiverse ecosystems on earth, yet it is not clear what drives speciation and diversification in the ocean, where there are few physical barriers that could separate populations.

The team of researchers used massive amounts of metagenomic sequencing data to try to understand

what may be some of the major drivers of adaptation and variation in corals.

"Corals have incredible variation with such a wide range of shapes, sizes, and colors that it's really hard for even the best trained experts to be able to sort out different species," said Zac Forsman, lead author of the study and HIMB assistant researcher. "On top of that, some corals lose their algal symbionts, turning stark white or 'bleached' and die during marine heatwaves, while a similar looking [coral](#) right next to it seems fine. We wanted to try to better understand what might be driving some of this incredible variation that you see on a typical coral reef."

Forsman and colleagues examined genetic relationships within the coral genus *Porites*, which forms the foundation and builds many [coral reefs](#) around the world. They were able to identify genes from the coral, algal symbionts, and bacteria that were most strongly associated with coral bleaching and other factors such as the shape (morphology) of the coral colony. They found relatively few genes associated with bleaching, but many associated with distance from shore, and colony morphologies that dominate different habitats.

"We sought out to better understand [coral bleaching](#) and place it in the context of other sources of variation in a coral species complex. Unexpectedly, we found evidence that these corals have adapted and diverged very recently over depth and distance from shore. The algal symbionts and microbes were also in the process of diverging, implying that co-evolution is involved. It's like we caught them in the act of adaptation and speciation."

"These corals have more complex patterns of variation related to habitat than we could have imagined and learning about how corals have diversified over various habitats can teach us about how they might adapt in the future," he explained.

"Since [variation](#) is the raw material for adaptation, there is hope for the capacity of these corals to adapt to future conditions, but only if we can slow down the pace of loss."

**More information:** Z. H. Forsman et al, Host-symbiont coevolution, cryptic structure, and bleaching susceptibility, in a coral species complex (Scleractinia; Poritidae), *Scientific Reports* (2020).  
[DOI: 10.1038/s41598-020-73501-6](https://doi.org/10.1038/s41598-020-73501-6)

Provided by University of Hawaii at Manoa

APA citation: Genomic data 'catches corals in the act' of speciation and adaptation (2020, November 2) retrieved 12 April 2021 from <https://phys.org/news/2020-11-genomic-corals-speciation.html>

*This document is subject to copyright. Apart from any fair dealing for the purpose of private study or research, no part may be reproduced without the written permission. The content is provided for information purposes only.*