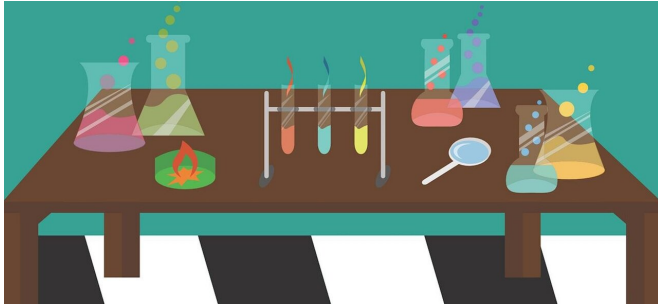


How is STEM children's programming prioritizing diversity?

16 October 2020



"Children soak up subtleties and are learning and taking cues from everything; by age 5, you can see that they understand implicit biases," says Fashina Aladé, lead author of the study. Credit: Royalty-free from PxHere

Children's television programming not only shapes opinions and preferences, its characters can have positive or negative impacts on childhood aspiration, says a new study from Michigan State University.

The study is the first large-scale analysis of characters featured in science, technology, engineering and math-related educational programming. It was published in the fall 2020 edition of *Journal of Children and Media*. Results revealed that of the characters appearing in STEM television programming for kids ages 3 to 6, Latinx and females are left behind.

"Children soak up subtleties and are learning and taking cues from everything; by age 5, you can see that they understand implicit biases," said Fashina Aladé, lead author of the study and assistant professor in the College of Communication Arts and Sciences. "With the recent proliferation of STEM television over the past five years or so, I wanted to see who was showing kids how to solve problems, who is teaching STEM foundations and who is modeling what it looks like to engage in STEM."

To get a picture of the entire landscape of STEM programming available to children, Aladé and colleagues—Alexis Lauricella of Erikson Institute, Yannik Kumar from University of Chicago and Ellen Wartella of Northwestern University—looked to Nielsen, Netflix, Amazon and Hulu for a list of children's shows that mentioned keywords like science, math, technology or problem-solving in their descriptions.

The researchers looked at 30 shows with target audiences between 3- and 6-year-olds, all claiming to teach some aspect of STEM. Coders watched 90 episodes total—three episodes from each show's most recent season—and coded over 1,000 characters who appeared on the shows for physical attributes, gender, race and ethnicity.

"Surprisingly, when it came to the centrality of their role and on-screen STEM engagement, characters were portrayed relatively equally regardless of their race or gender," Aladé said. "But, female and minority characters were underrepresented in these programs compared to population statistics."

An interesting finding, Aladé said, was that racially ambiguous characters—including non-human skin tones, like pink or purple—comprised 13% of the characters, which she suggests illustrates producers' attempts to show racial diversity. "The jury's still out on whether those subtle cues are effective," Aladé said. Additionally, the study also found that only 14% of the shows showed occupations related to STEM.

"Animation presents such an opportunity for representation. Ideally, we'd see authentic representation—not representative stereotypes," Aladé said. "I hope we move in a direction where kids see what scientists really look like in today's world, where doctors, engineers and computer scientists come from all ethnicities and genders."

More information: Fashina Aladé et al. Who's

modeling STEM for kids? A character analysis of children's STEM-focused television in the U.S., *Journal of Children and Media* (2020). DOI: [10.1080/17482798.2020.1810087](https://doi.org/10.1080/17482798.2020.1810087)

Provided by Michigan State University

APA citation: How is STEM children's programming prioritizing diversity? (2020, October 16) retrieved 19 October 2020 from <https://phys.org/news/2020-10-stem-children-prioritizing-diversity.html>

This document is subject to copyright. Apart from any fair dealing for the purpose of private study or research, no part may be reproduced without the written permission. The content is provided for information purposes only.