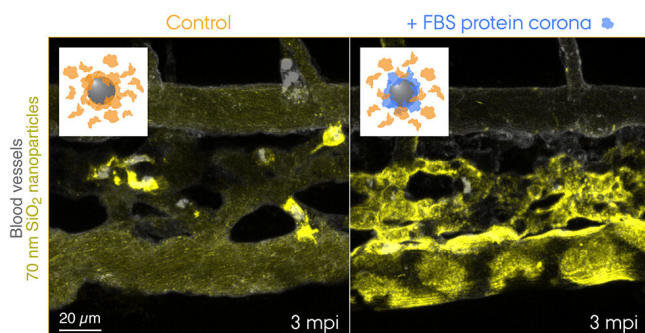


Zebrafish embryos help prove what happens to nanoparticles in the blood

30 September 2020



Fluorescently labelled 70 nm SiO₂ nanoparticles were injected into the bloodstream of 3 days old transgenic zebrafish embryos and live-imaged at 3 min after the injection. The insets show schematics for the two conditions tested: control nanoparticles with a corona of endogenous proteins (orange) and nanoparticles with a pre-formed corona of fetal bovine serum (FBS) proteins (blue) and additional endogenous proteins. Control nanoparticles are rapidly captured by macrophages, while the nanoparticles with a non-self biological identity are effectively sequestered by scavenger endothelial cells. Credit: Yuya Hayashi. Adapted from Mohammad-Beigi et al. (2020) ACS Nano. Copyright 2020 American Chemical Society

A variety of nanoparticles are designed for targeted drug delivery, but unfortunately only a very small proportion of the injected nanoparticles reach the target site such as solid tumors. The reason behind the low targeting efficiency is often considered a "black box" and had thus been little explored for many years.

Recently, an international research team led by Yuya Hayashi from the Department of Molecular Biology and Genetics (MBG), Aarhus University, demonstrated the beauty of zebrafish embryos in nano-bioimaging that can visualize dynamic interactions between [nanoparticles](#) and [cells](#) of interest in a [living organism](#) (see another article "Zebrafish let you see the biological fate of

nanoparticles in vivo").

Now, teaming up with researchers from Interdisciplinary Nanoscience Center (iNANO), Yuya seeks to answer unsolved mysteries in bionanoscience—the first in line is the biological identity concept, which explains how cells recognize nanoparticles through a "corona" of proteins that surround each particle. This concept has now been proved for the first time in a living organism by the use of zebrafish embryos uncovering what happens to nanoparticles injected into the blood.

Friend or foe? How biological systems recognize nanoparticles

"What the Cell Sees in Bionanoscience" is one of the early publications that have defined how a corona of proteins forms around a nanoparticle and how such a [protein](#) corona implies the need for rethinking the way we look at nanoparticles within a biological milieu. From extensive research in the past decade, we now understand that two opposing effects mainly contribute to nanoparticle uptake by cells. In general, the protein corona prevents the nanoparticle surface from direct physical interactions with the cell membrane. However, what if the protein corona presents a signal that triggers a specific biological interaction with receptors deployed on the cell membrane? That is something the cell sees and thus confers a biological identity to the nanoparticle.

Now the researchers from Aarhus University have thus provided the first "visual" evidence for the striking contribution of the protein corona to nanoparticle clearance from the blood that entailed adverse outcomes in the zebrafish embryo model. The research team used a species-mismatched source of proteins for the corona formation to create a "non-self" biological identity and traced the journey of nanoparticles traveling through the blood and to their final destination—endolysosomes in the

cell. This revealed surprisingly rapid uptake and acidification of the nanoparticles by scavenger endothelial cells (functional equivalent to the liver sinusoidal endothelial cells in mammals) followed by pro-inflammatory activation of macrophages (see the movie featured in Yuya's group webpage).

"It sounds like a crazy idea to inject nanoparticles with proteins from another animal," says Yuya, "but for example, biomolecule-inspired nanomedicines are tested in a mouse model without particular concerns for the species-mismatched combination. Or else some clever folks humanize the mouse to take care of the species compatibility problem. In fact, even at the cell culture level nanoparticles are still routinely tested following the tradition to use serum supplement derived from cows while knowing that nanoparticle-protein interactions are a key driver of cellular uptake."

"What makes this kind of experiments rather challenging is," adds first-author Hossein Mohammad-Beigi, "to maximally retain the original protein corona in a living organism. If the pre-formed corona gets quickly exchanged by endogenous blood proteins, the hypothesis tested becomes invalid. We have made quite some efforts to characterize the protein corona to ensure the nanoparticles preserve the non-self biological identity."

Seeing is believing—the zebrafish model can offer what rodent models cannot

The greatest advantage of the zebrafish model is its power in multicolour real-time imaging, whereby multiple combinations of fluorescence tracers and reporter proteins can be imaged in a simple setup at high spatio-temporal resolution. This provides a new opportunity that lies between less realistic cell culture systems and more challenging rodent experiments such as intravital microscopy.

"Using cell cultures, we have learnt quite a lot about how cells recognize nanoparticles rather as dynamic aggregates of proteins but it was never tested in a more realistic situation," Yuya explains. "With establishment of the zebrafish model, we have finally acquired a means to further explore this question in a living organism. It was a simple

approach with an extreme scenario tested in a very complex system, but I believe we are now one step closer to understanding what the protein corona can really mean to nanoparticles. In an environment rich in proteins, nanoparticles can wear a mask that gives them a biological identity, and its non-selfness can make them a foe. What defines the degree of the non-selfness? Well, it's the next big question we have to address."

More information: Hossein Mohammad-Beigi et al, Tracing the In Vivo Fate of Nanoparticles with a "Non-Self" Biological Identity, *ACS Nano* (2020). [DOI: 10.1021/acsnano.0c05178](https://doi.org/10.1021/acsnano.0c05178)

Provided by Aarhus University

APA citation: Zebrafish embryos help prove what happens to nanoparticles in the blood (2020, September 30) retrieved 24 November 2020 from <https://phys.org/news/2020-09-zebrafish-embryos-nanoparticles-blood.html>

This document is subject to copyright. Apart from any fair dealing for the purpose of private study or research, no part may be reproduced without the written permission. The content is provided for information purposes only.