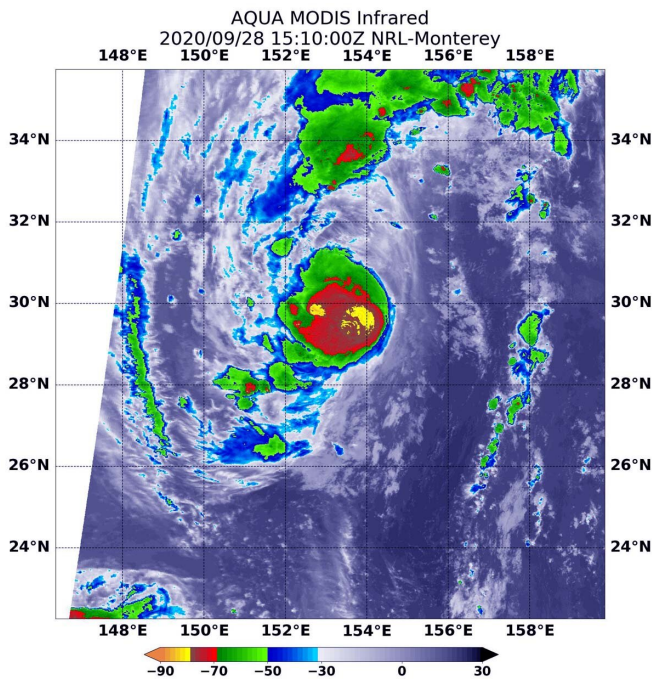


NASA casts an infrared eye on Tropical Storm Kujira's very cold cloud tops

28 September 2020



On Sept. 28 at 6:15 a.m. EDT (1015 UTC) NASA's Aqua satellite analyzed Tropical Storm Kujira's cloud top temperatures and found strongest storms (yellow) were around Kujira's center of circulation and in a band of thunderstorms in its western quadrant. Temperatures in those areas were as cold as minus 80 degrees Fahrenheit (minus 62.2 Celsius). An area of strong storms with cloud top temperatures as cold as minus 70 degrees (red) Fahrenheit (minus 56.6. degrees Celsius) surrounded the center. Credit: NASA/NRL

NASA analyzed the cloud top temperatures in Tropical Storm Kujira using infrared light to determine the strength of the storm. Infrared imagery revealed that the strongest storms were around Kujira's center and in a band of thunderstorms on the western side of the storm.

The [low-pressure area](#) designated System 97W consolidated and strengthened into a [tropical depression](#) on Sept. 26 by 5 p.m. EDT (2100

UTC). On Sept. 27 at 11 a.m. EDT (1500 UTC), the Joint Typhoon Warning Center noted that the depression had strengthened into a [tropical storm](#) and was renamed Kujira.

An Infrared View of Kujira

One of the ways NASA researches [tropical cyclones](#) is by using infrared data that provides temperature information. Cloud top temperatures identify where the strongest storms are located. The stronger the storms, the higher they extend into the troposphere, and the colder the cloud top temperatures.

On Sept. 28 at 6:15 a.m. EDT (1015 UTC) NASA's Aqua satellite analyzed Kujira using the Moderate Resolution Imaging Spectroradiometer or MODIS instrument. The MODIS imagery showed the strongest storms were around Kujira's center of circulation and in a fragmented band of thunderstorms in the western quadrant. Persistent deep convection was also obscuring the low-level circulation center.

Temperatures in those areas were as cold as minus 80 degrees Fahrenheit (minus 62.2 Celsius). An area of strong storms with cloud top temperatures as cold as minus 70 degrees Fahrenheit (minus 56.6. degrees Celsius) surrounded the center. NASA research has shown that cloud top temperatures that cold indicate strong storms that have the capability to create heavy rain.

NASA provides data to tropical cyclone meteorologists so they can incorporate it in their forecasts.

Kujira's Status on Sept. 28

At 11 a.m. EDT (1500 UTC) on Sept. 28, the center of Tropical Storm Kujira was located near latitude 29.7 degrees north and longitude 153.3 degrees

east. That is about 286 nautical miles north of Minami Tori Shima. Minami Tori Shima is an isolated Japanese coral atoll located about 1,148 miles (1,848 kilometers) southeast of Tokyo, Japan.

Kujira had maximum sustained winds near 45 knots (52 mph/83 kph) with higher gusts. The [storm](#) is moving north through the open waters of the Northwestern Pacific Ocean.

Kujira's Forecast

Kujira forecast to intensify and track north-northeastward through next 24 hours as it rounds a subtropical ridge (elongated area of high pressure.) Forecasters at the Joint Typhoon Warning Center expect Kujira will begin extratropical transition as it interacts with mid-latitude westerlies (winds) and encounters increasing [vertical wind shear](#) (outside winds that can weaken and tear a tropical cyclone apart).

Provided by NASA's Goddard Space Flight Center
APA citation: NASA casts an infrared eye on Tropical Storm Kujira's very cold cloud tops (2020, September 28) retrieved 1 December 2020 from <https://phys.org/news/2020-09-nasa-infrared-eye-tropical-storm.html>

This document is subject to copyright. Apart from any fair dealing for the purpose of private study or research, no part may be reproduced without the written permission. The content is provided for information purposes only.