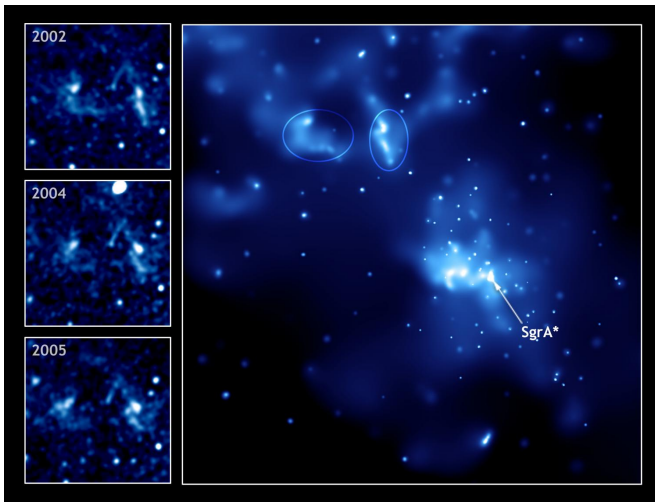


Innovative model provides insight into the behavior of the black hole at the center of our galaxy

12 June 2020, by Harrison Tasoff



Sagittarius A*. This image was taken with NASA's Chandra X-Ray Observatory. Credit: Public domain

Like most galaxies, the Milky Way hosts a supermassive black hole at its center. Called Sagittarius A*, the object has captured astronomers' curiosity for decades. And now there is an effort to image it directly.

Catching a good photo of the celestial beast will require a better understanding of what's going on around it, which has proved challenging due to the vastly different scales involved. "That's the biggest thing we had to overcome," said Sean Ressler, a postdoctoral researcher at UC Santa Barbara's Kavli Institute for Theoretical Physics (KITP), who just published a paper in the *Astrophysical Journal Letters*, investigating the magnetic properties of the accretion disk surrounding Sagittarius A*.

In the study, Ressler, fellow KITP postdoc Chris White and their colleagues, Eliot Quataert of UC Berkeley and James Stone at the Institute for

Advanced Study, sought to determine whether the black hole's magnetic field, which is generated by infalling matter, can build up to the point where it briefly chokes off this flow, a condition scientists call magnetically arrested. Answering this would require simulating the system all the way out to the closest orbiting stars.

The system in question spans seven orders of magnitude. The black hole's [event horizon](#), or envelope of no return, reaches around 4 to 8 million miles from its center. Meanwhile, the stars orbit around 20 trillion miles away, or about as far as the sun's nearest neighboring star.

"So you have to track the matter falling in from this very large scale all the way down to this very small scale," said Ressler. "And doing that in a single simulation is incredibly challenging, to the point that it's impossible." The smallest events proceed on timescales of seconds while the largest phenomena play out over thousands of years.

This paper connects small scale simulations, which are mostly theory-based, with large-scale simulations that can be constrained by actual observations. To achieve this, Ressler divided the task between models at three overlapping scales.

The first simulation relied on data from Sagittarius A*'s surrounding stars. Fortunately, the black hole's activity is dominated by just 30 or so Wolf-Rayet stars, which blow off tremendous amounts of material. "The mass loss from just one of the stars is larger than the total amount of stuff falling into the black hole during the same time," Ressler said. The stars spend only around 100,000 years in this dynamic phase before transitioning into a more stable stage of life.

Using observational data, Ressler simulated the

orbits of these stars over the course of about a thousand years. He then used the results as the starting point for a simulation of medium-range distances, which evolve over shorter time scales. He repeated this for a simulation down to the very edge of the event horizon, where activity takes place in matters of seconds. Rather than stitching together hard overlaps, this approach allowed Ressler to fade the results of the three simulations into one another.

"These are really the first models of the accretion at the smallest scales in [Sagittarius] A* that take into account the reality of the supply of matter coming from orbiting stars," said coauthor White.

And the technique worked splendidly. "It went beyond my expectations," Ressler remarked.

The results indicated that Sagittarius A* can become magnetically arrested. This came as a surprise to the team, since the Milky Way has a relatively quiet galactic center. Usually, magnetically arrested [black holes](#) have high-energy jets shooting particles away at relativistic speeds. But so far scientists have seen little evidence for jets around Sagittarius A*.

"The other ingredient that helps create jets is a rapidly spinning black hole," said White, "so this may be telling us something about the spin of Sagittarius A*."

Unfortunately, black hole spin is difficult to determine. Ressler modeled Sagittarius A* as a stationary object. "We don't know anything about the spin," he said. "There's a possibility that it's actually just not spinning."

Ressler and White next plan to model a spinning black hole, which is much more challenging. It immediately introduces a host of new variables, including spin rate, direction and tilt relative to the accretion disc. They will use data from the European Southern Observatory's GRAVITY interferometer to guide these decisions.

The team used the simulations to create images that can be compared to actual observations of the black hole. Scientists at the Event Horizon

Telescope collaboration—which made headlines in April 2019 with the first direct image of a black hole—have already reached out requesting the [simulation](#) data in order to supplement their effort to photograph Sagittarius A*.

The Event Horizon Telescope effectively takes a time average of its observations, which results in a blurry image. This was less of an issue when the observatory had their sights on Messier 87*, because it is around 1,000 times larger than Sagittarius A*, so it changes around 1,000 times more slowly.

"It's like taking a picture of a sloth versus taking a picture of a hummingbird," Ressler explained. Their current and future results should help the consortium interpret their data on our own galactic center.

Ressler's results are a big step forward in our understanding of the activity at the center of the Milky Way. "This is the first time that Sagittarius A* has been modeled over such a large range in radii in 3-D simulations, and the first event horizon-scale simulations to employ direct observations of the Wolf-Rayet [stars](#)," Ressler said.

More information: Sean M. Ressler et al. Ab Initio Horizon-scale Simulations of Magnetically Arrested Accretion in Sagittarius A* Fed by Stellar Winds, *The Astrophysical Journal* (2020). [DOI: 10.3847/2041-8213/ab9532](https://doi.org/10.3847/2041-8213/ab9532)

Provided by University of California - Santa Barbara

APA citation: Innovative model provides insight into the behavior of the black hole at the center of our galaxy (2020, June 12) retrieved 20 September 2021 from <https://phys.org/news/2020-06-insight-behavior-black-hole-center.html>

This document is subject to copyright. Apart from any fair dealing for the purpose of private study or research, no part may be reproduced without the written permission. The content is provided for information purposes only.