

# New Horizons conducts the first interstellar parallax experiment

12 June 2020



This two-frame animation of Proxima Centauri blinks back and forth between New Horizons and Earth images of each star, clearly illustrating the different view of the sky New Horizons has from its deep-space perch. Credit: NASA

For the first time, a spacecraft has sent back pictures of the sky from so far away that some stars appear to be in different positions than we'd see from Earth.

More than four billion miles from home and speeding toward [interstellar space](#), NASA's New Horizons has traveled so far that it now has a unique view of the nearest [stars](#). "It's fair to say that New Horizons is looking at an alien sky, unlike what we see from Earth," said Alan Stern, New Horizons principal investigator from Southwest Research Institute (SwRI) in Boulder, Colorado.

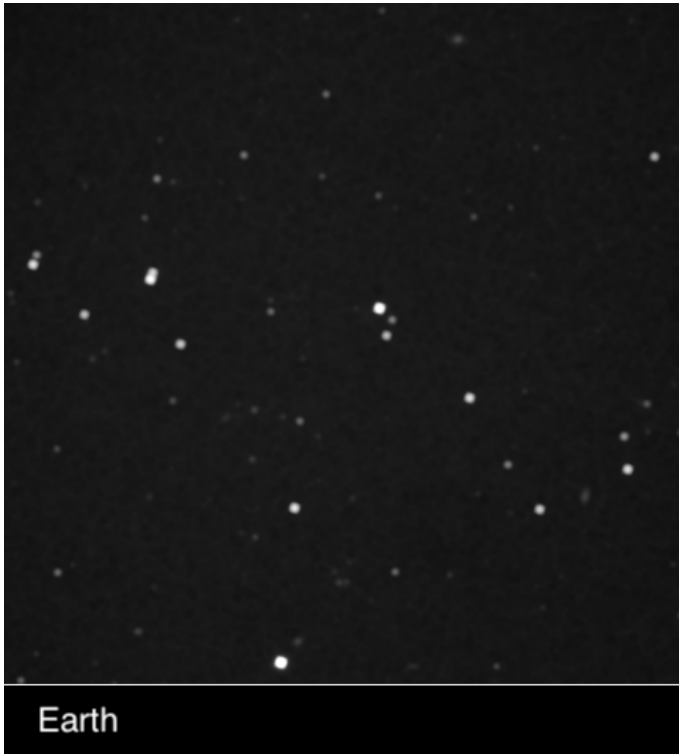
"And that has allowed us to do something that had never been accomplished before—to see the nearest stars visibly displaced on the sky from the positions we see them on Earth."

On April 22-23, the spacecraft turned its long-range telescopic camera to a pair of the "closest" stars, Proxima Centauri and Wolf 359, showing just how they appear in different places than we see from Earth. Scientists have long used this "parallax effect"—how a star appears to shift against its background when seen from different locations—to measure distances to stars.

An easy way to see parallax is to place one finger at arm's length and watch it jump back and forth when you view it successively with each eye. Similarly, as Earth makes its way around the Sun, the stars shift their positions. But because even the nearest stars are hundreds of thousands of times farther away than the diameter of Earth's orbit, the parallax shifts are tiny, and can only be measured with precise instrumentation.

"No human eye can detect these shifts," Stern said.

But when New Horizons images are paired with pictures of the same stars taken on the same dates by telescopes on Earth, the parallax shift is instantly visible. The combination yields a 3-D view of the stars "floating" in front of their background star fields.



This two-frame animation of Wolf 359 blinks back and forth between New Horizons and Earth images of each star, clearly illustrating the different view of the sky New Horizons has from its deep-space perch. Credit: NASA

"The New Horizons experiment provides the largest parallax baseline ever made—over 4 billion miles—and is the first demonstration of an easily observable stellar parallax," said Tod Lauer, New Horizons science team member from the National Science Foundation's National Optical-Infrared Astronomy Research Laboratory who coordinated the parallax demonstration.

"The New Horizons spacecraft is truly a mission of firsts, and this demonstration of stellar parallax is no different" said Kenneth Hansen, New Horizons program scientist at NASA Headquarters in Washington. "The New Horizons spacecraft continues to speed away from Earth toward interstellar space and is continuing to return exciting new data for planetary science."

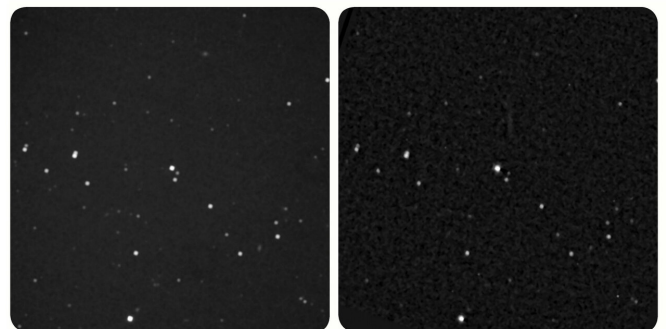
**Working in Stereo**

Lauer, New Horizons Deputy Project Scientist John

Spencer, of SwRI, and science team collaborator, astrophysicist, Queen guitarist and stereo imaging enthusiast Brian May created the images that clearly show the effect of the vast distance between Earth and the two nearby stars.

"It could be argued that in astro-stereoscopy—3-D images of astronomical objects—NASA's New Horizons team already leads the field, having delivered astounding stereoscopic images of both Pluto and the remote Kuiper Belt object Arrokoth," May said. "But the latest New Horizons stereoscopic experiment breaks all records. These photographs of Proxima Centauri and Wolf 359—stars that are well-known to [amateur astronomers](#) and science fiction aficionados alike—employ the largest distance between viewpoints ever achieved in 180 years of stereoscopy!"

The companion images of Proxima Centauri and Wolf 359 were provided by the Las Cumbres Observatory, operating a remote telescope at Siding Spring Observatory in Australia, and astronomers John Kielkopf, University of Louisville, and Karen Collins, Harvard and Smithsonian Center for Astrophysics, operating a remote telescope at Mt. Lemmon Observatory in Arizona.



Parallel Stereo of Wolf 359: Use a stereo viewer for these images; if you don't have a viewer, change your focus from the image by looking "through" it (and the screen) and into the distance. This creates the effect of a third image in the middle, and try setting your focus on that third image. The New Horizons image is on the left. Credit: NASA

"The professional and amateur astronomy communities had been waiting to try this, and were very excited to make a little space exploration history," said Lauer. "The images collected on Earth when New Horizons was observing Proxima Centauri and Wolf 359 really exceeded my expectations."

Download the images (and learn more about creating and posting your own [parallax](#) perspectives) at [pluto.jhuapl.edu/Learn/Parallax.../Parallax-Images.php](http://pluto.jhuapl.edu/Learn/Parallax.../Parallax-Images.php)

### **An Interstellar Navigation First**

Throughout history, navigators have used measurements of the stars to establish their position on Earth. Interstellar navigators can do the same to establish their position in the galaxy, using a technique that New Horizons has demonstrated for the first time. While radio tracking by NASA's Deep Space Network is far more accurate, its first use is a significant milestone in what may someday become human exploration of the galaxy.

At the time of the observations, New Horizons was more than 4.3 billion miles (about 7 billion kilometers) from Earth, where a radio signal, traveling at the speed of light, needed just under six hours and 30 minutes to reach home.

Launched in 2006, New Horizons is the first mission to Pluto and the Kuiper Belt. It explored Pluto and its moons in July 2015—completing the space-age reconnaissance of the planets that started 50 years earlier—and continued on its unparalleled voyage of exploration with the close flyby of Kuiper Belt object Arrokoth in January 2019. New Horizons will eventually leave the solar system, joining the Voyagers and Pioneers on their paths to the stars.

**More information:** New Horizons at NASA:  
[www.nasa.gov/mission\\_pages/new\\_horizons/main/index.html](http://www.nasa.gov/mission_pages/new_horizons/main/index.html)

Provided by NASA

APA citation: New Horizons conducts the first interstellar parallax experiment (2020, June 12) retrieved

28 February 2021 from <https://phys.org/news/2020-06-horizons-interstellar-parallax.html>

*This document is subject to copyright. Apart from any fair dealing for the purpose of private study or research, no part may be reproduced without the written permission. The content is provided for information purposes only.*