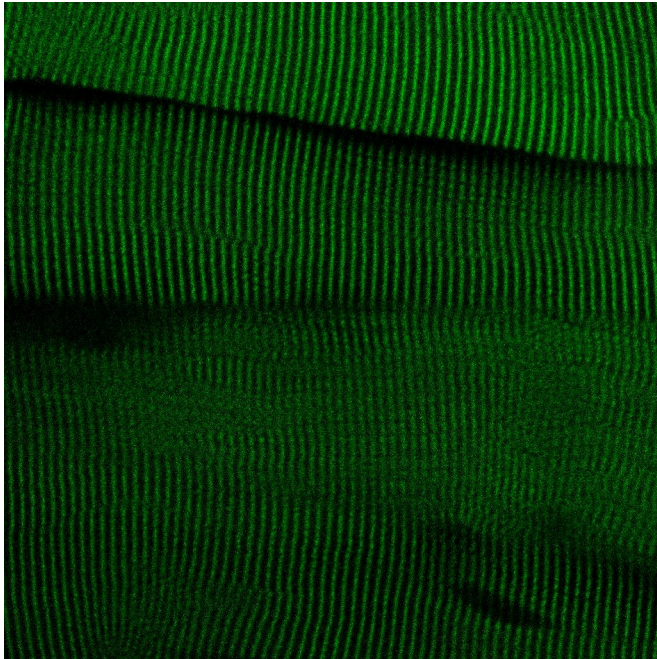


Scientists design an experimental mouse model for investigating the mechanical function of proteins

28 April 2020



Mouse muscle tissue modified with the HaloTag-TEV fluorescent tag. Credit: CNIC

The Molecular Mechanics of the Cardiovascular System group at the Centro Nacional de Investigaciones Cardiovasculares (CNIC), led by Jorge Alegre Cebollada, in partnership with an international scientific team, has generated the first experimental mouse model that allows direct analysis of the mechanical function of proteins in living organisms.

The model, published today in *Nature Communications*, is based on the insertion of the HaloTag-TEV genetic [cassette](#) into titin, one of the proteins responsible for the elasticity of skeletal and cardiac muscle. The HaloTag-TEV cassette combines three key properties. Dr. Alegre said, "Thanks to the introduction of this cassette into the

gene, we are able to fluorescently mark the [protein](#), which makes it easy to track the cassette and see where it has inserted correctly. The cassette includes a target for specific protein lysis, so that the mechanical function of the target protein can be interrupted in a controlled manner at any desired moment, allowing us to study the effect of this interruption." Finally, the cassette "provides a way to anchor the isolated protein to surfaces, enabling the study of its [mechanical properties](#) by single-molecule techniques."

"All of this helps to establish a bridge between the modulation of protein mechanical properties and observing the consequences of this modulation at a [cellular level](#)," said Dr. Alegre.

It is well known that cells and the living organisms they comprise respond to changes in the environment. But among the environmental conditions to which living beings must adapt, the purely mechanical forces that constantly act upon them are often overlooked. "This relationship between cells and the mechanical components of their environment is extremely important, and explains many phenomena related to disease, such as cancer metastasis and atherosclerosis, which underlies several cardiovascular conditions."

In recent decades, the development of new technologies has permitted the study of the mechanical behavior of proteins, which is responsible at the molecular level for the ability of [cells](#) to sense and generate forces.

These techniques have enabled the characterization of the mechanical properties of individual molecules, studied one by one, and this has transformed knowledge about the relationship between force and biological molecules. However, understanding how this relationship operates in the

native environment of the cell was until now not possible.

The story doesn't end with titin. The HaloTag-TEV cassette can be inserted into other proteins with a mechanical function, so that in the future, it could be used to study other systems, including those related to diverse muscular and cardiac disorders.

More information: Jaime Andrés Rivas-Pardo et al. A HaloTag-TEV genetic cassette for mechanical phenotyping of proteins from tissues, *Nature Communications* (2020). DOI: [10.1038/s41467-020-15465-9](https://doi.org/10.1038/s41467-020-15465-9)

Provided by Centro Nacional de Investigaciones Cardiovasculares Carlos III (F.S.P.)

APA citation: Scientists design an experimental mouse model for investigating the mechanical function of proteins (2020, April 28) retrieved 22 September 2020 from <https://phys.org/news/2020-04-scientists-experimental-mouse-mechanical-function.html>

This document is subject to copyright. Apart from any fair dealing for the purpose of private study or research, no part may be reproduced without the written permission. The content is provided for information purposes only.