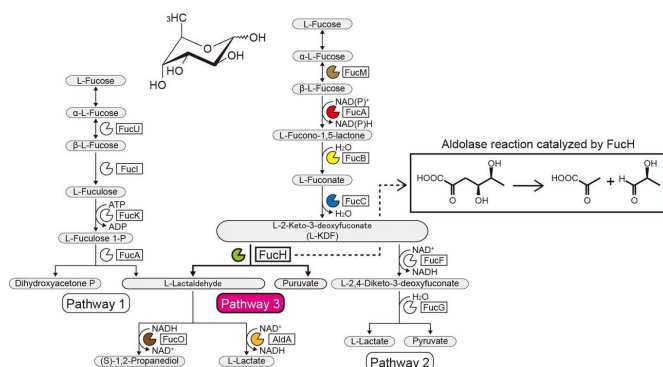


A novel L-fucose metabolic pathway from strictly anaerobic and pathogenic bacteria

March 11 2020

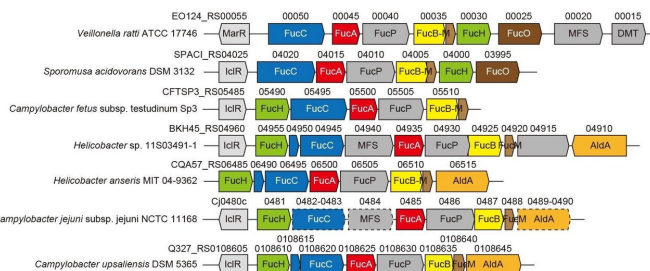


L-Fucose metabolic pathways. Credit: Ehime University

This categorization corresponded to the (Re)- or (Si)-facial selectivity of the pyruvate enamine on the (glycer)aldehyde carbonyl in the aldol-condensation reaction. These properties are commonly determined by whether a serine or threonine residue is positioned at the equivalent position close to the [active site\(s\)](#), and site-directed mutagenesis markedly modified C4-OH preference and the selective formation of a diastereomer. We propose that substrate specificity of 2-keto-3-deoxysugar acid aldolases was convergently acquired during evolution and report the discovery of another L-2-keto-3-deoxyfuconate aldolase involved in the same non-phosphorylating L-fucose pathway in *Campylobacter jejuni*.

The genetic context in bacterial genomes and screening for potential substrates can help identify the biochemical functions of bacterial enzymes. The Gram-negative, strictly anaerobic bacterium *Veillonella ratti* possesses a gene cluster that appears to be related to L-fucose metabolism and contains a putative dihydrodipicolinate synthase DHDPS/NAL protein (FucH). Here, screening of a library of 2-keto-3-deoxysugar acids with this protein and the biochemical characterization of neighboring genes revealed that this gene cluster encodes enzymes in a previously unknown "Route I" non-phosphorylating L-fucose pathway.

Previous studies of other aldolases in the DHDPS/NAL protein superfamily used only limited numbers of compounds, and the approach reported here enabled elucidation of the substrate specificities and stereochemical selectivities of these aldolases and the comparison of them with those of FucH. According to the aldol cleavage reaction, the aldolases were specific for (R)- and (S)-stereospecific groups at the C4 position of 2-keto-3-deoxysugar acid, but had no structural specificity or preference for the [methyl groups](#) at the C5 and C6 positions, respectively.



Gene clusters related to novel non-phosphorylative L-fucose pathway from anaerobic and pathogenic bacteria. Credit: Ehime University

More information: Seiya Watanabe. Characterization of L-2-keto-3-deoxyfuconate aldolases in a nonphosphorylating L-fucose metabolism pathway in anaerobic bacteria, *Journal of Biological Chemistry* (2019). [DOI: 10.1074/jbc.RA119.011854](#)

Provided by Ehime University

APA citation: A novel L-fucose metabolic pathway from strictly anaerobic and pathogenic bacteria (2020, March 11) retrieved 8 December 2022 from <https://phys.org/news/2020-03-l-fucose-metabolic-pathway-strictly-anaerobic.html>

This document is subject to copyright. Apart from any fair dealing for the purpose of private study or research, no part may be reproduced without the written permission. The content is provided for information purposes only.