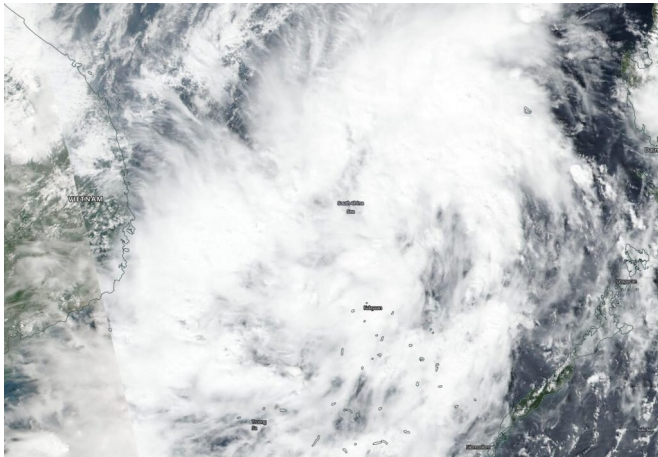


NASA finds Tropical Storm Matmo consolidating off Vietnam coast

30 October 2019, by Rob Gutro



NASA-NOAA's Suomi NPP satellite passed over Tropical Storm Matmo in the South China Sea on Oct. 30, 2019 as it was nearing the coast of southeastern central Vietnam. Credit: NASA Worldview, Earth Observing System Data and Information System (EOSDIS) NASA-NOAA's Suomi NPP satellite passed over Tropical Storm Matmo in the South China Sea on Oct. 30 as it was nearing the coast of southeastern central Vietnam. Credit: NASA Worldview, Earth Observing System Data and Information System (EOSDIS)

NASA-NOAA's Suomi NPP satellite captured an image of Tropical Storm Matmo as it developed in the South China Sea, off the coast of Vietnam. The storm is expected to make a landfall in central southeastern Vietnam later on Oct. 30.

Visible imagery from NASA satellites help forecasters understand if a storm is organizing or weakening. The Visible Infrared Imaging Radiometer Suite (VIIRS) instrument aboard Suomi NPP provided a visible image of Matmo on Oct. 30 and found the storm taking on a much more rounded shape than the previous day.

The shape of the storm is a clue to forecasters that

a storm is either strengthening or weakening. If a storm takes on a more rounded [shape](#) it is getting more organized and strengthening. Conversely, if it becomes less rounded or elongated, it is a sign the storm is weakening.

At 5 a.m. EDT (0900 UTC) on Oct. 30, the center of Matmo was near latitude 13.2 degrees north and longitude 111.0 degrees east. The post-tropical cyclone was moving toward the west-northwest. Maximum sustained winds associated with this system are near 46 mph (40 knots/74 kph) with higher gusts.

Vietnam's National Centre for Hydro-Meteorological Forecasting (NCHMF) has posted a tropical [storm](#) warning for southeast central Vietnam. Matmo is expected to make landfall near Nha Trang. Nha Trang lies on the coast and is the capital of the Khanh Hoa Province, on the South Central Coast of Vietnam.

The Joint Typhoon Warning Center expects that Matmo will move west-northwest to make [landfall](#) in Vietnam later in the day.

Hurricanes are the most powerful weather event on Earth. NASA's expertise in space and scientific exploration contributes to essential services provided to the American people by other federal agencies, such as hurricane weather forecasting.

More information: For updated forecasts from the National Centre for Hydro-Meteorological Forecasting (NCHMF), visit: www.nchmf.gov.vn/

Provided by NASA's Goddard Space Flight Center

APA citation: NASA finds Tropical Storm Matmo consolidating off Vietnam coast (2019, October 30)
retrieved 1 December 2021 from <https://phys.org/news/2019-10-nasa-tropical-storm-matmo-vietnam.html>

This document is subject to copyright. Apart from any fair dealing for the purpose of private study or research, no part may be reproduced without the written permission. The content is provided for information purposes only.