

W. Antarctica's crumbling ice sheet to redraw global coastline

23 September 2019, by Marlowe Hood



In Antarctica, 99 percent of all ice loss occurs when ice slides into the ocean

The fate of the world's coastal regions and the hundreds of millions of people who inhabit them depend on a block of ice atop West Antarctica on track to lift global oceans by at least three metres.

It is not, according to available science, a matter of "if" but "when".

Anders Levermann, a professor at the Potsdam Institute of Climate Impact Research in Germany and a top expert on Antarctica, spoke to AFP — days before the release in Monaco of a major UN report on oceans and Earth's frozen zones — about how [climate change](#) is impacting the world's coldest region.

Q. Does global warming affect Greenland and Antarctica the same way?

No. In Antarctica, 99 percent of all ice loss occurs when ice slides into the ocean. There is practically no ice melt on the surface — it is simply too cold.

In Greenland, half of the ice loss is due to melt

water that runs into the ocean.

When ice in Antarctica or Greenland slides into the ocean and becomes an ice shelf, it comes into contact with surface water. Even a tenth of a degree increase in the temperature of the water can lead to a significant [ice sheet](#) imbalance.

Greenland's ice sheet is much smaller than Antarctica's — seven metres of sea level equivalent vs. 55 — but sheds even more mass. That is because Antarctica, even if its topography has fewer barriers, is so much colder.



West Antarctica's ice sheet has shed about 150 billion tonnes of mass every year since 2005

Q. What do we know about Antarctica that we didn't know a decade ago?

Ten years ago the modelling of Antarctica showed no significant ice loss within this century. Indeed, there was some debate as to whether the continent might add ice mass.

Today, all the ice sheet models lose ice at a significant rate. The continent's ice sheet has shed about 150 billion tonnes of mass every year since 2005, virtually all of it in West Antarctica. Ice loss in both Greenland and Antarctica is accelerating.

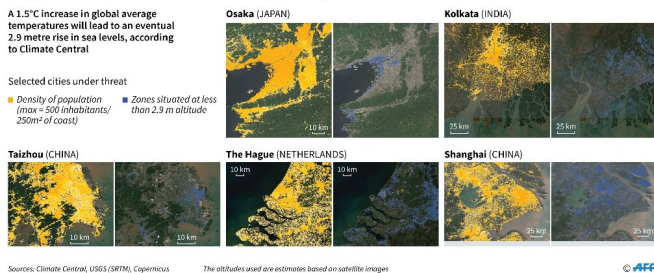
There is no longer any ambiguity. The studies we have in hand tell us that West Antarctica has passed a tipping point. It has become unstable and will discharge all its most vulnerable ice into the ocean. Period.

Q. How much will Antarctica add to sea level rise by 2100?

A study I did with numerous colleagues in 2014 estimated that we could get 50 centimetres of sea level from Antarctica by 2100 — which is huge. The last assessment of the Intergovernmental Panel on Climate Change (IPCC) said 16 cm was the upward limit.

In 2016 an important study published in Nature — introducing new physical processes — proposed an even higher contribution, of up to more than a metre. That study has been much criticised, and the findings may be revised.

Major coastal cities threatened by rising sea levels



Hamburg, Calcutta and Shanghai — we are going to lose them all to sea level rise if we do not stop emitting carbon into the atmosphere

Q. What will happen after 2100?

In 2100, nothing stops.

If we keep to the Paris Agreement, sea level rise

will at best slow down. If we don't, it will still be accelerating at the end of the century.

The most vulnerable part of the West Antarctic ice sheet — equivalent to 3.5 metres of sea level rise — sits in depressions below sea level, where ocean water infiltrates and erodes the ice sheet from underneath.

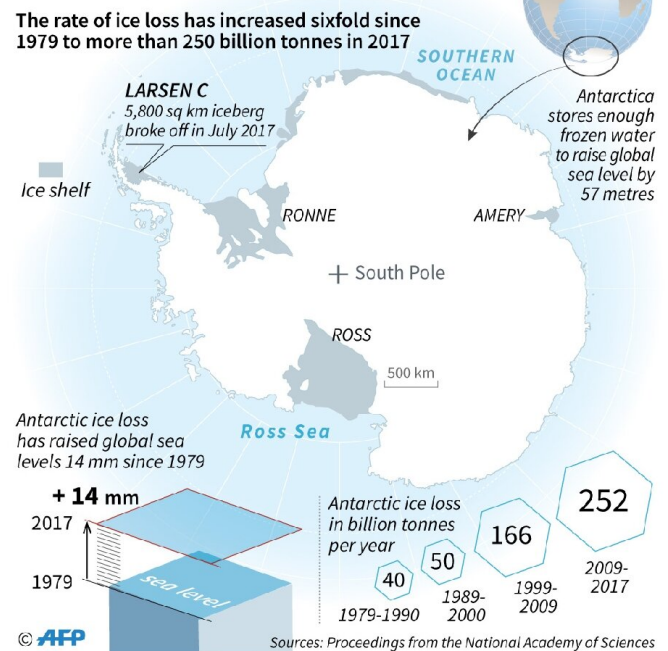
Q. How long will it take for the ice sheet to disappear?

I think we are underestimating the speed. That said, for all of the W. Antarctic ice sheet to discharge, it will take centuries. But it won't stop.

Q. How worried should we be?

Nobody should fear for their life because of rising seas. But if New York winds up five metres below sea level behind dikes and levees, I don't know if people will want to live there.

Accelerating Antarctic sea ice melt



The most vulnerable part of the West Antarctic ice sheet — equivalent to 3.5 metres of sea level rise — sits in depressions below sea level, where ocean water infiltrates and erodes the ice sheet from underneath

The real impact is what we will lose. Hong Kong is currently a beacon of democracy in China. New Orleans is a bastion of culture, and New York of culture and business. Hamburg, Calcutta and Shanghai — we are going to lose them all to [sea level rise](#) if we do not stop emitting carbon into the atmosphere.

Q. Why is Antarctica harder to figure out than Greenland?

Unlike the Greenland ice sheet, ice loss in Antarctica is not due to melting, but to a discharge of icebergs into the ocean. Getting it right is difficult — at first, we were unable to model and observe this process.

The first satellite images for West Antarctica are from 1992. So when we began to see [ice loss](#) there a decade ago, we had less than 20 years of data. That's not long enough to detect long-term trends.

Ice sheets change over a long time scale, so observations can be very misleading.

Antarctica is shielded from the rest of the world by the strongest [ocean](#) current on the planet, and the situation is similar for the atmosphere. That is also hard to factor in.

© 2019 AFP

APA citation: W. Antarctica's crumbling ice sheet to redraw global coastline (2019, September 23) retrieved 25 September 2021 from <https://phys.org/news/2019-09-antarctica-crumbling-ice-sheet-redraw.html>

This document is subject to copyright. Apart from any fair dealing for the purpose of private study or research, no part may be reproduced without the written permission. The content is provided for information purposes only.