

# Study shows interactions between bacteria and parasites

18 September 2019



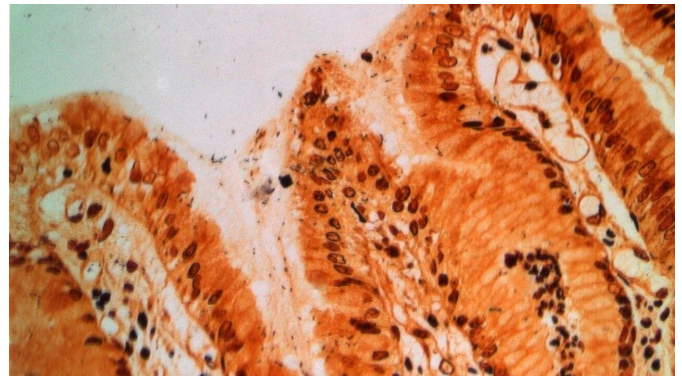
A juvenile blood fluke. Schistosomiasis infection can lead to liver cirrhosis, among others. Credit: Clarissa Prazeres da Costa / TUM

A team at the Technical University of Munich (TUM) has completed the first study of the effects of a simultaneous infection with blood flukes (schistosomes) and the bacterium *Helicobacter pylori*—a fairly common occurrence in some parts of the world. They identified a complex interaction which resulted—among other effects—in a weakening of the adverse impact of the pathogens acting individually.

Around 240 million people worldwide are afflicted with schistosomiasis, an illness caused by flatworms of the genus *Schistosoma*, commonly known as blood flukes. These parasites generally enter the human body with water from lakes, ponds or rivers. Worms, larvae and eggs are transported to various organs in the body through the bloodstream. The species *Schistosoma mansoni* is especially damaging to the liver, where it causes cirrhosis.

*Helicobacter pylori* is a bacterium that colonizes the human stomach. One in three people in Germany carry it and the worldwide rate is actually around 50%. Infections are associated with

stomach ulcers and cancer. In places where schistosomes are widespread, as in some African countries south of the Sahara, co-infections with *Helicobacter pylori* are frequent. A team headed by Prof. Clarissa Prazeres da Costa and Prof. Markus Gerhard of the Institute for Medical Microbiology, Immunology and Hygiene at TUM used mice to study what happens in a co-infection with *Helicobacter pylori* and *Schistosoma mansoni*.



Stomach tissue infected with *Helicobacter pylori* (dark dots). These bacteria can cause stomach ulcers and cancer. Credit: Markus Gerhard / TUM

## Misdirection of T-cells and reduction of liver cirrhosis

In a schistosomiasis infection, the initial infection is followed by an acute phase, superseded about five weeks later by a chronic phase. In their study, Prazeres da Costa and Gerhard show that fewer T-cells are found in the stomach during the acute phase of schistosomiasis. In hosts infected only by *Helicobacter pylori*, these [immune cells](#) are more numerous in the stomach and cause inflammation there. "We show that the schistosomiasis drives an increase in chemokine levels in the liver. The chemokines attract the T-cells and, in a sense, misdirect them to the liver," says Markus Gerhard.

This leads to a reduction in stomach inflammation, he explains.

Provided by Technical University Munich

This effect fades away when the chronic phase begins, however. While hosts infected with schistosomiasis alone often suffer liver damage during that phase, this is less common with co-infections. In their investigations, Prazeres da Costa and Gerhard detected elevated quantities of the signalling protein IL-13dRa2 in the blood of mice infected with the bacteria. "IL-13dRa2 can provide protection against cirrhosis and can even reverse tissue changes," says Clarissa Prazeres da Costa. "We therefore believe that they could play a decisive role to reduce the extent of liver cirrhosis in co-infections."

### **Possible effects on vaccines**

In [everyday life](#), many people are repeatedly re-infected with schistosomes because they come into frequent contact with water containing the worms. "As a result, there is no [time limit](#) on the diversion of T-cells to the [liver](#) because the chronic and acute phases occur simultaneously," explains Clarissa Prazeres da Costa.

At first glance, the interactions in case of a co-infection may look like a positive side effect: Although the infected individual is suffering from two illnesses, the harmful effects of both are seemingly reduced. "Co-infections can have other consequences, however. For example, the changed immune response can limit the effectiveness of vaccines," says Markus Gerhard. "Co-infections are widespread especially in poorer regions," adds Clarissa Prazeres da Costa. "We urgently need more studies on their effects and ways of dealing with them, for example in order to develop new and more effective vaccination strategies."

**More information:** Sonakshi Bhattacharjee et al, Concomitant Infection of *S. mansoni* and *H. pylori* Promotes Promiscuity of Antigen-Experienced Cells and Primes the Liver for a Lower Fibrotic Response, *Cell Reports* (2019). [DOI: 10.1016/j.celrep.2019.05.108](#)

APA citation: Study shows interactions between bacteria and parasites (2019, September 18) retrieved 17 November 2019 from <https://phys.org/news/2019-09-interactions-bacteria-parasites.html>

*This document is subject to copyright. Apart from any fair dealing for the purpose of private study or research, no part may be reproduced without the written permission. The content is provided for information purposes only.*