

# Altered gene expression may trigger collapse of symbiotic relationship

5 July 2019

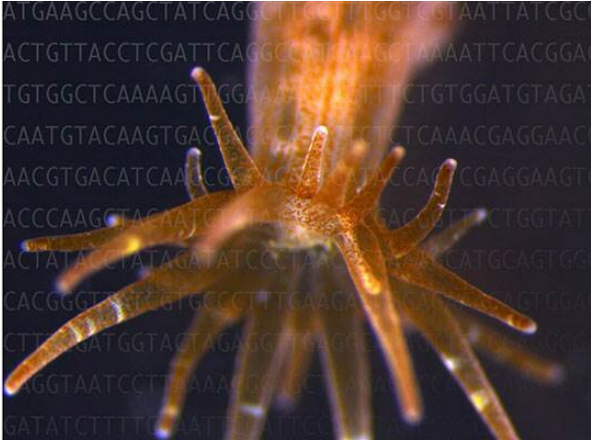


Figure 1. The model symbiotic sea anemone *Exaiptasia diaphana* and a sequence of a 'HIBA' sterol transporter gene. Credit: Shinichiro Maruyama.

Researchers in Japan have identified the potential genes responsible for coral bleaching caused by temperature elevation.

Researchers carried out a transcriptomic analysis with the symbiotic sea anemone *Exaiptasia diaphana* (Fig. 1), an emerging model cnidarian, under multiple culture conditions. The [temperature rise](#) and the shift to a non-symbiotic state (a state in which two organisms are not interdependent on one another) caused the expression levels of 292 genes to alter dramatically and irreversibly (Fig. 2). The research group argues that the 292 "Heat Induced Bleaching Associated" (HIBA) genes include factors of [coral bleaching](#) as a result of temperature elevation.

Coral reefs are a major reservoir of biodiversity in the sea. Their ecosystem relies on a stable symbiotic relationship between the host cnidarian animals, including corals and sea anemones, and the symbiont dinoflagellate. Ongoing environmental changes due to [global warming](#) can

permanently damage the symbiosis: a phenomenon known as "coral bleaching." However, mechanisms for maintaining stable symbiosis are poorly understood.

In the study, the HIBA genes were subjected to a functional classification analysis and divided into four major functional groups: transporters, oxidation-reduction, lysosomes, and [carbohydrate metabolism](#) (Fig. 3). According to Shinichiro Maruyama, an assistant professor at Tohoku University "Lysosome is a versatile organelle that degrades various substances in a cell." He adds that "inhabitation of the symbiont dinoflagellate in an organelle called 'symbiosome,' something that resembles lysosomes, suggests a relationship between lysosomes and bleaching; a situation where number of symbionts has decreased in the host cnidarian animal." In addition, symbiont carbohydrates have long been believed to contribute to symbiosis. Based on these factors, the team hypothesizes that degradation of carbohydrates in lysosomes is the central function of the HIBA genes, and generates the need for further investigation.

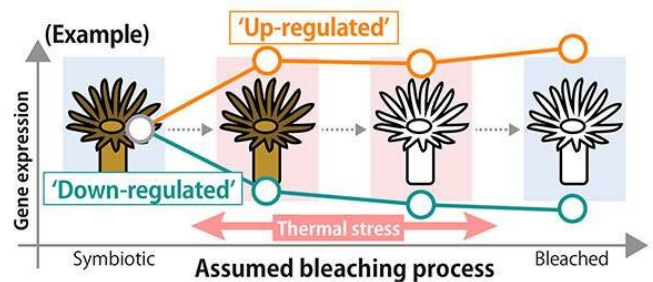


Figure 2. A schematic example of the expression pattern changes of HIBA genes. Credit: Modified from Ishii et al.

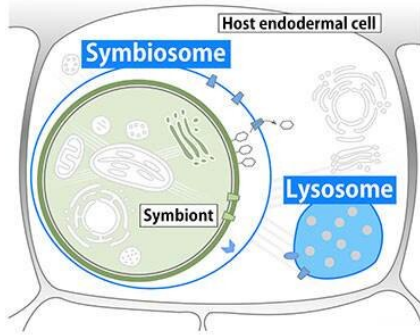


Figure 3. Cellular compartments and metabolic functions potentially relevant to bleaching, suggested by this study. Credit: Modified form Ishii et al.

**More information:** Yuu Ishii et al. Global Shifts in Gene Expression Profiles Accompanied with Environmental Changes in Cnidarian-Dinoflagellate Endosymbiosis, *G3: Genes/Genomes/Genetics* (2019). DOI: [10.1534/g3.118.201012](https://doi.org/10.1534/g3.118.201012)

Provided by Tohoku University

APA citation: Altered gene expression may trigger collapse of symbiotic relationship (2019, July 5) retrieved 17 November 2019 from <https://phys.org/news/2019-07-gene-trigger-collapse-symbiotic-relationship.html>

*This document is subject to copyright. Apart from any fair dealing for the purpose of private study or research, no part may be reproduced without the written permission. The content is provided for information purposes only.*