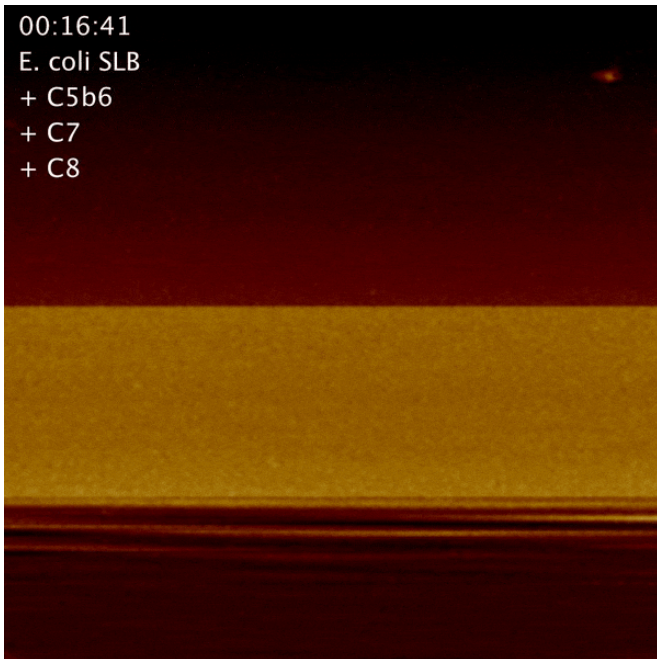


Filming how our immune system kill bacteria

6 May 2019



the immune system response results in 'bullet holes' spread across the cell envelopes of bacteria. The holes are incredibly small with a diameter of just 10 nanometres.

For this study, the researchers mimicked how these deadly holes are formed by the membrane attack complex (MAC) using a model [bacterial surface](#). By tracking each step of the [process](#), they found that shortly after each hole started to form, the process stalled, offering a reprieve for the body's own cells.

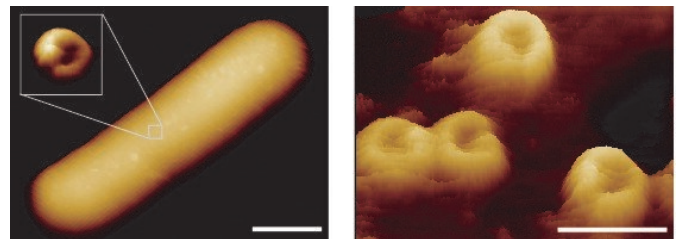
"It appears as if these nanomachines wait a moment, allowing their potential victim to intervene in case it is one of the body's own cells instead of an invading bug, before they deal the killer blow," explained Dr. Edward Parsons (UCL London Centre for Nanotechnology).

Holes forming. Credit: Edward S. Parsons et al. UCL

To kill bacteria in the blood, our immune system relies on nanomachines that can open deadly holes in their targets. UCL scientists have now filmed these nanomachines in action, discovering a key bottleneck in the process which helps to protect our own cells.

The research, published in *Nature Communications*, provides us with a better understanding of how the [immune system](#) kills bacteria and why our own cells remain intact. This may guide the development of new therapies that harness the immune system against bacterial infections, and strategies that repurpose the immune system to act against other rogue cells in the body.

In earlier research, the scientists imaged the hallmarks of attack in live bacteria, showing that

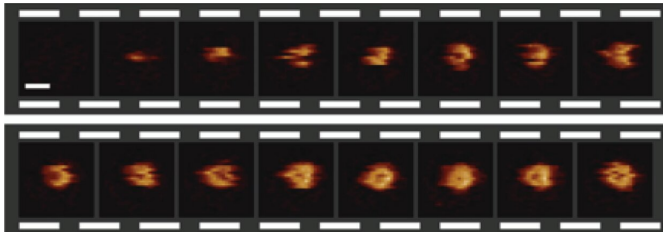


So-called membrane attack complexes -- imaged on the back of a bacterium. The scale bars correspond to 800 (left) and 30 (right) nanometres. Credit: EMBO Journal (2019), 10.15252/embj.201899852.

The team say the process pauses as 18 copies of the same protein are needed to complete a hole. Initially, there's only one copy which inserts into the bacterial [surface](#), after which the other copies of the protein slot into place much more rapidly.

"It is the insertion of the first protein of the membrane attack complex which causes the

bottleneck in the killing process. Curiously, it coincides with the point where hole formation is prevented on our own healthy [cells](#), thus leaving them undamaged," said Professor Bart Hoogenboom (UCL Physics & Astronomy).



A video sequence of the formation of a hole in a bacterial surface, recorded at 6.5 seconds per frame. The scale bar (see first frame) corresponds to 30 nanometres. Credit: Edward S. Parsons et al.

To film the immune system in action at nanometre resolution and at a few seconds per frame, the scientists used [atomic force microscopy](#). This type of microscopy uses an ultrafine needle to feel rather than see molecules on a surface, similar to a blind person reading Braille. The needle repeatedly scans the surface to produce an image that refreshes fast enough to track how immune proteins get together and cut into the bacterial surface.

More information: Edward S. Parsons, George J. Stanley, Alice L.B. Pyne, Adrian W. Hodel, Adrian P. Nievergelt, Anaïs Menny, Alexander R. Yon, Ashlea Rowley, Ralf P. Richter, Georg E. Fantner, Doryen Bubeck, and Bart W. Hoogenboom, Single-molecule kinetics of pore assembly by the membrane attack complex, *Nature Communications* (2019). DOI: [10.1038/s41467-019-10058-7](https://doi.org/10.1038/s41467-019-10058-7)

Provided by University College London
APA citation: Filming how our immune system kill bacteria (2019, May 6) retrieved 30 November 2020 from <https://phys.org/news/2019-05-immune-bacteria.html>

This document is subject to copyright. Apart from any fair dealing for the purpose of private study or research, no part may be reproduced without the written permission. The content is provided for information purposes only.