

# Fit for Mars

1 March 2019



ExoFIT rover in Chile. Credit: Airbus

Rovers are versatile explorers on the surface of other planets, but they do need some training before setting off. A model of Rosalind Franklin rover that will be sent to Mars in 2021 is scouting the Atacama Desert, in Chile, following commands from mission control in the United Kingdom, over 11 000 km away.

The ExoFIT field campaign simulates ExoMars operations in every key aspect. During the trial, the rover drove from its landing platform and targets sites of interest to sample rocks in the Mars-like landscapes of the Chilean desert.

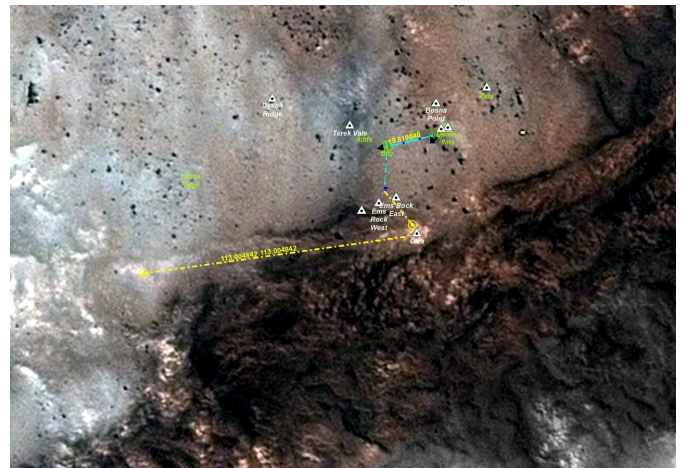
ESA's human and robotic exploration director, David Parker, explains "we call these tests 'ExoFit' - meaning ExoMars-like Field Testing. The results will help us prepare the real Rosalind Franklin rover for the challenge of safe operation far across the Solar System."

The team behind the exercise, a mix of scientists and engineers, is simulating all the challenges of a real [mission](#) on the Red Planet, including communication delays, local weather conditions and tight deadlines.

"We make teleoperations as martian as possible,"

explains Juan Delfa, ESA's robotics engineer overseeing the activities.

"We are continuously working against the clock as you need to take into account signals from Mars take between 4 and 24 minutes to arrive at Earth while blasts of wind might cover the rover's solar panels with dust, and that we only have a few hours to decide what the rover should do next," adds Juan.



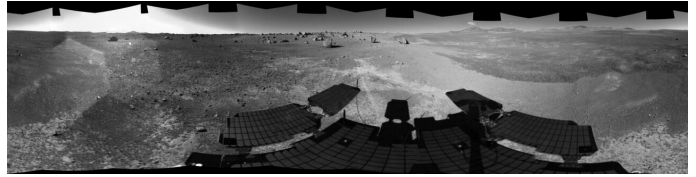
ExoFIT rover voyage. Credit: ESA/Airbus

The campaign started on 18 February and will run until 1 March. This is the first time that ESA's European Centre for Space Applications and Telecommunications (ECSAT), in Harwell, UK, is acting as a mission control.

With over 60 people from different space and scientific organisations involved, "it is all about getting the teams to practice with real mission issues. We are learning how to teleoperate a rover in the field and to make decisions in the most efficient way," says Lester Waugh, ExoFIT mission manager from Airbus.

**A rover on the field, scientists in the blind**

The rover is equipped with a set of cameras and proxy instruments, such as a radar, a spectrometer and a drill, to replicate martian operations.



A stitched panorama taken by the ExoFit model on sol six of the ExoFit campaign. Credit: ESA/Airbus



ExoFiT rover in Chile. Credit: ESA/Airbus

As it departed from the 'landing site' in a remote barren area, the first thing this prototype of ExoMars did was share a panoramic image and its location coordinates with [mission control](#).

Scientists in the UK must take decisions on the next steps with the little information they have – a combination of the data transmitted by the rover and satellite images of the terrain.

"We only see what the rover sends us and we cannot rely on any other real-time information," explains lead mission scientist Matt Balme, a planetary geologist from The Open University.

On every martian day, known as sol in the planetary jargon, scientists analyse the data they receive and establish a whole plan for the next day in just a few hours. "It is a logistical challenge, and the planning cycle is quite stressful," says Matt.

The ExoFiT teams in the UK set the exploration path and activities for the [rover](#), which travels at a speed of two centimeters per second avoiding rocks and overcoming slopes.

Drilling into ancient rocks is an important part of the trial. "Just like we would do on Mars, we want to understand the geological history of the area and look for signs of life," says Matt.

ExoFiT stands for ExoMars-like Field Testing, and it is an essential step to improving European robotic operations not only for ExoMars, but also for future missions aiming to return soil from the Red Planet, such as the Mars Sample Return mission.

Provided by European Space Agency

APA citation: Fit for Mars (2019, March 1) retrieved 14 November 2019 from <https://phys.org/news/2019-03-mars.html>

*This document is subject to copyright. Apart from any fair dealing for the purpose of private study or research, no part may be reproduced without the written permission. The content is provided for information purposes only.*