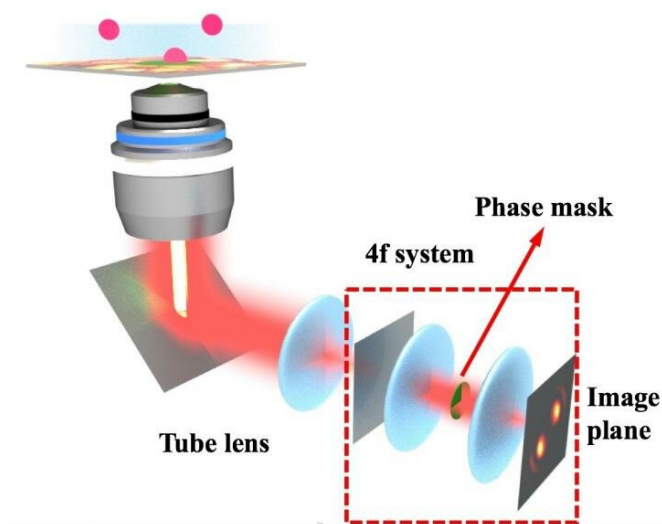


# Shaping light lets 2-D microscopes capture 4-D data

14 February 2019



The Rice method to expand the capabilities of existing wide-field fluorescence microscopes is detailed in the team's open-access paper in *Optics Express*.

It describes the creation of custom phase masks: transparent, spinning disks that manipulate light's phase to change the shape of the image captured by the microscope's camera. The shape contains information about a molecule's 3-D position in space and how it behaves over time within the camera's field of view.

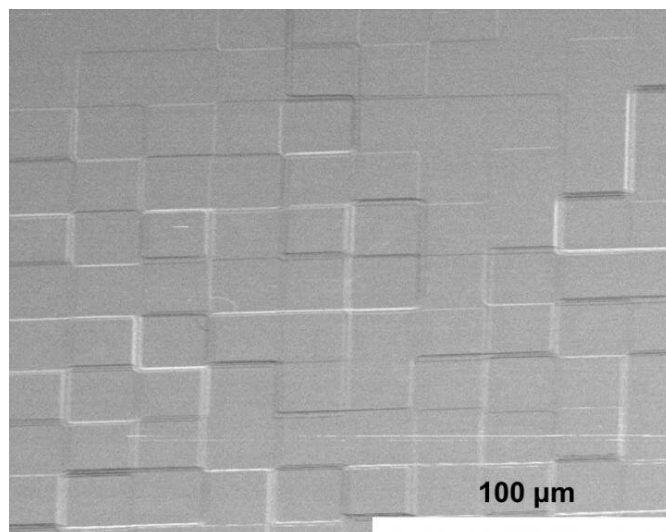
A [phase mask](#) turns what seems like an inconvenience, the blurry blob in a microscope image, into an asset. Scientists give this blob a name—point spread function—and use it to get details about objects below the diffraction limit that are smaller than all visible light microscopes are able to see.

Rice University researchers have created a method to design custom masks that transform 2D fluorescent microscopy images into 3D movies. Credit: Landes Research Group/Rice University

Rice University researchers have added a new dimension to their breakthrough technique that expands the capabilities of standard laboratory microscopes.

Two years ago, the Rice lab of chemist Christy Landes introduced super temporal resolution microscopy, a technique that allowed researchers to image [fluorescent molecules](#) 20 times faster than traditional lab cameras normally allow. They've now developed a general method to let a microscope capture 3-D [spatial information](#) along with the fourth dimension, molecular movement over time.

This, they say, will help scientists who study dynamic processes view where molecules of interest are located and how fast they move—for example, within living cells.



An electron microscope image shows a phase mask programmed by an algorithm created at Rice University. The customizable mask lets the Rice lab take images of molecules to determine their depth and how fast they move, even if they are faster than a single camera frame. Credit: Landes Research Group/Rice University

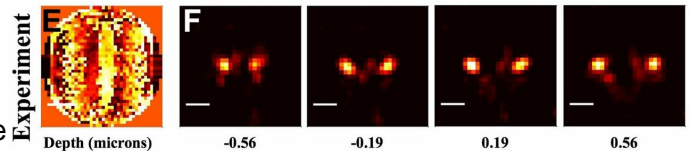
The original work used a rotating phase mask that transformed light from a single fluorescent molecule into what the researchers called a rotating double helix. The captured image appeared on the camera as two glowing disks, like the lobes of a barbell. In the new work, the rotating barbells let them see not only where molecules were in three-dimensional space, but also gave each molecule a time stamp.

The heart of the new work lies in algorithms by lead author and Rice electrical and computer engineering alumnus Wenxiao Wang. The algorithms make it practical to design custom phase masks that modify the shape of the point spread function.

"With the double helix phase mask, the time information and spatial information were connected," said co-author Chayan Dutta, a postdoctoral researcher in Landes' lab. "The lobes' rotation could express either 3-D space or fast time information, and there was no way to tell the difference between time and space."

Better phase masks solve that problem, he said. "The new phase mask design, which we call a stretching lobe phase mask, decouples space and time," Dutta said. "When the targets are at different depths, the lobes stretch farther apart or come closer, and the time information is now encoded just in the rotation."

The trick is to manipulate light at the spinning phase mask to optimize the pattern for different depths. That is accomplished by the refractive pattern programmed into the mask by the algorithm. "Each layer is optimized in the algorithm for different detection depths," said graduate student and co-author Nicholas Moringo. "Where before, we could see objects in two dimensions over time, now we can see all three spatial dimensions and fast time behavior simultaneously."



The point spread functions of single molecules, captured as double lobes through a phase mask (left), can tell researchers where the molecule is in 3D space. The distance between the lobes gives them the molecule's depth. Credit: Landes Research Group/Rice University

"Wide-field fluorescence microscopes are used in many fields, especially cell biology and medical imaging," Landes said. "We are just starting to demonstrate how manipulating light's phase within a microscope is a reasonably simple way to improve space and time resolution compared to developing new fluorescent tags or engineering new hardware improvements."

One important outcome that could have broad appeal, she said, is that the researchers generalized the phase mask design so researchers can fabricate [masks](#) to create virtually any arbitrary pattern. To demonstrate, the group designed and fabricated a mask to create a complex point spread function that spells out RICE at different focal depths. A video shows the ghostly letters appear and disappear as the [microscope](#) moves to different depths above and below the focal plane.

Such flexibility will be useful for applications like analyzing processes inside living cancer cells, a project the lab hopes to pursue soon with Texas Medical Center partners.

"If you have a cell on a glass slide, you'll be able to understand where objects in the cell are in relationship to each other and how fast they move," Moringo said. "Cameras aren't fast enough to capture all of what happens in a cell, but our system can."

**More information:** Wenxiao Wang et al, Generalized method to design phase masks for 3D super-resolution microscopy, *Optics Express* (2019). DOI: [10.1364/OE.27.003799](https://doi.org/10.1364/OE.27.003799)

Provided by Rice University

APA citation: Shaping light lets 2-D microscopes capture 4-D data (2019, February 14) retrieved 26 June 2019 from <https://phys.org/news/2019-02-d-microscopes-capture.html>

*This document is subject to copyright. Apart from any fair dealing for the purpose of private study or research, no part may be reproduced without the written permission. The content is provided for information purposes only.*