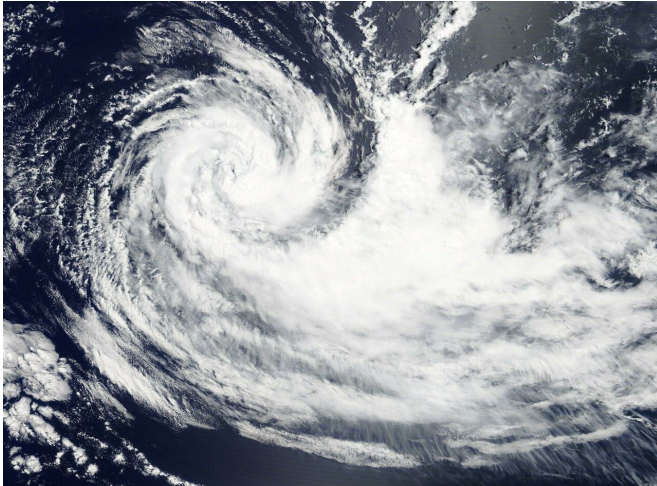


# NASA finds Tropical Cyclone Gelena in the middle of the Southern Indian Ocean

13 February 2019



That's 1,193 nautical miles east-southeast of Port Louis, Mauritius. Omi was moving east-southeast.

JTWC has forecast Gelena to continue moving southeastward and weakening to dissipation in two days.

Provided by NASA's Goddard Space Flight Center

On Feb. 13, 2019, the MODIS instrument aboard NASA's Terra satellite provided a visible image of Tropical Cyclone Gelena in the Southern Indian Ocean that showed bands of thunderstorms spiraling into the center. Credit: NASA Worldview, EARTH Observing System Data and Information System (EOSDIS).

Visible imagery from NASA's Terra satellite showed a weaker Tropical Storm Gelena far from land areas, and in the middle of the Southern Indian Ocean.

On Feb. 13, the Moderate Resolution Imaging Spectroradiometer or MODIS instrument aboard NASA's Terra satellite provided a visible image of Gelena. The image showed bands of thunderstorms spiraling into a cloud-filled, but defined low level circulation with the bulk of its associated convection and clouds pushed eastward from [westerly winds](#).

At 10 a.m. EDT (1500 UTC) on Feb. 13, the Joint Typhoon Warning Center or JTWC noted that Oma had maximum sustained winds near 55 knots (63 mph/102 kph). It was centered near 26.0 degrees north latitude and 79.2 degrees east longitude.

APA citation: NASA finds Tropical Cyclone Gelena in the middle of the Southern Indian Ocean (2019, February 13) retrieved 21 October 2019 from <https://phys.org/news/2019-02-nasa-tropical-cyclone-gelena-middle.html>

*This document is subject to copyright. Apart from any fair dealing for the purpose of private study or research, no part may be reproduced without the written permission. The content is provided for information purposes only.*