

# Parker solar probe looks back at home

24 October 2018, by Sarah Frazier



The view from Parker Solar Probe's WISPR instrument on Sept. 25, 2018, shows Earth, the bright sphere near the middle of the right-hand panel. The elongated mark toward the bottom of the panel is a lens reflection from the WISPR instrument. Credit: NASA/Naval Research Laboratory/Parker Solar Probe

On Sept. 25, 2018, Parker Solar Probe captured a view of Earth as it sped toward the first Venus gravity assist of the mission. Earth is the bright, round object visible in the right side of the image.

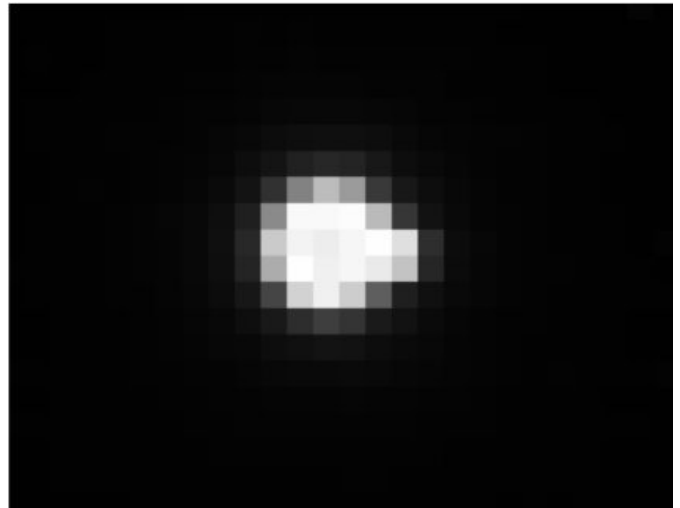
The image was captured by the WISPR (Wide-field Imager for Solar Probe) [instrument](#), which is the only imaging instrument on board Parker Solar Probe. During science phases, WISPR sees structures within the Sun's atmosphere, the corona, before they pass over the spacecraft. The two panels of WISPR's image come from the instrument's two telescopes, which point in slightly different directions and have different fields of view. The inner telescope produced the left-hand image, while the outer [telescope](#) produced the image on the right.

Zooming in on Earth reveals a slight bulge on the right side: that is the Moon, just peeking out from behind Earth. At the time the image was taken,

Parker Solar Probe was about 27 million miles from Earth.

The hemispherical shaped feature in the middle of the right-hand image is a lens flare, a common feature when imaging bright sources, which is caused by reflections within the lens system. In this case, the flare is due to the very bright Earthshine. Close passes by Venus and Mercury may occasionally create similar patterns in the future, but these are limited cases and do not affect the science operations of the instrument.

Some of the visible objects in the image—like Pleiades to the low-left of Earth in the right-hand image and the two bright objects, Betelgeuse and Bellatrix, near the bottom of the left-hand image—appear elongated because of reflections on the edge of the detector.



A close-up of Earth from WISPR's Sept. 25, 2018, image shows what appears to be a bulge on our planet's right side -- this is the Moon. Credit: NASA/Naval Research Laboratory/Parker Solar Probe

Provided by NASA's Goddard Space Flight Center

APA citation: Parker solar probe looks back at home (2018, October 24) retrieved 18 September 2021 from <https://phys.org/news/2018-10-parker-solar-probe-home.html>

*This document is subject to copyright. Apart from any fair dealing for the purpose of private study or research, no part may be reproduced without the written permission. The content is provided for information purposes only.*