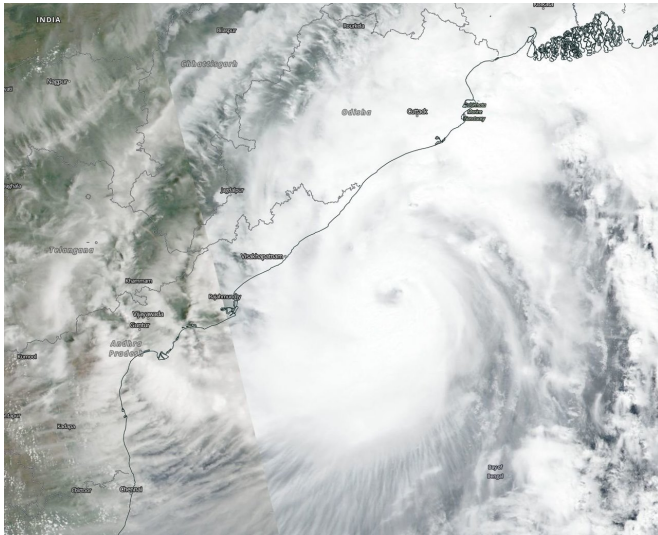


NASA catches Tropical Cyclone Titli headed for landfall in India

11 October 2018



On Oct. 10 at 11 p.m. EDT (Oct. 11 at 0300 UTC) Tropical Cyclone Titli had maximum sustained winds near 90 knots (103 mph/166 kph). It was centered near 9.1 degrees north latitude and 84.4 degrees east longitude, approximately 312 nautical miles southwest of Calcutta, India. Titli tracked west-northwestward.

Titli came ashore near Palasa in Srikakulam district of Andhra Pradesh. Heavy rainfall is forecast for the districts of Ganjam, Gajapati, Puri, Jagatsinghpur, and Kendra. The storm has taken 7 lives. Strong winds battered many parts of the state of Andhra Pradesh and neighboring Odisha.

By October 13, JTWC expect Titli to dissipate over land.

NASA-NOAA's Suomi NPP satellite provided this visible image of Tropical Cyclone Titli early on Oct. 10, 2018 when its eye was over the Bay of Bengal, Northern Indian Ocean. Credit: NASA Worldview, Earth Observing System Data and Information System (EOSDIS)/ NOAA

Provided by NASA's Goddard Space Flight Center

The Joint Typhoon Warning Center or JTWC issued the final warning on Tropical Cyclone Titli after it made landfall on the northeastern coast of India late on Oct. 10. NASA-NOAA's Suomi NPP satellite captured an image of the large storm before landfall.

The Visible Infrared Imaging Radiometer Suite (VIIRS) instrument aboard NASA-NOAA's Suomi NPP [satellite](#) analyzed Tropical Cyclone Titli in visible light early on Oct. 10 when its eye was over the Bay of Bengal, Northern Indian Ocean. Titli stretched from the Indian state of Andhra Pradesh northeast into West Bengal. Before and after [landfall](#), animated enhanced infrared satellite imagery showed strong thunderstorms surrounding a defined eye.

APA citation: NASA catches Tropical Cyclone Titli headed for landfall in India (2018, October 11)
retrieved 24 May 2019 from <https://phys.org/news/2018-10-nasa-tropical-cyclone-titli-landfall.html>

This document is subject to copyright. Apart from any fair dealing for the purpose of private study or research, no part may be reproduced without the written permission. The content is provided for information purposes only.