

# This wild plant could be the next strawberry

1 October 2018



a place where the technology allows us to reach."

## New tastes

For growers, new crops mean a chance to diversify and offer more options to consumers. The next major berry has eluded food producers for years, Lippman says. Groundcherries are appealing candidates because they are drought tolerant and have an enticing flavor. You have to taste the fruit to fully grasp its complexity, says Lippman, who describes it as tropical yet sour, sometimes with hints of vanilla.

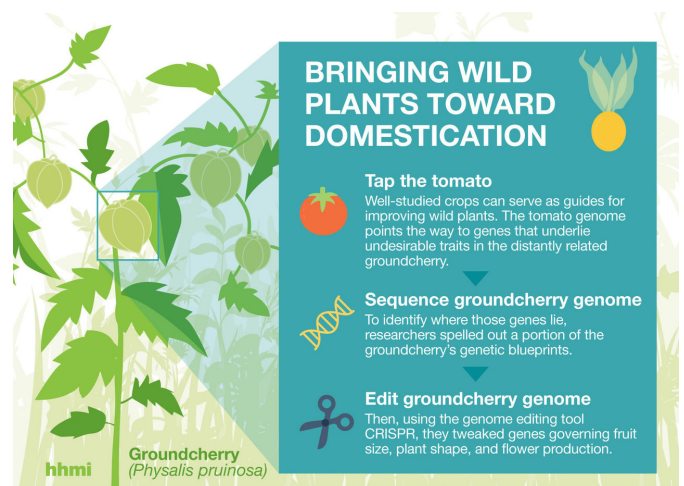
With the help of CRISPR genome editing, researchers have found a way to take the groundcherry (*Physalis peruviana*) from almost wild to almost domesticated in a matter of years. Credit: Sebastian Soyk

Strawberries, blueberries, blackberries, raspberries, and... groundcherries? A little-known fruit about the size of a marble could become agriculture's next big berry crop.

To prepare the groundcherry (*Physalis peruviana*) for mainstream farming, Howard Hughes Medical Institute Investigator Zachary Lippman, Joyce Van Eck at the Boyce Thompson Institute, and colleagues combined genomics and gene editing to rapidly improve traits such as [fruit](#) size, plant shape, and flower production.

Their results show that it's possible to take a plant that's practically wild and bring it close to domestication in a matter of years. The team describes their work, a shortcut around traditional breeding techniques, October 1, 2018, in the journal *Nature Plants*.

"I firmly believe that with the right approach, the groundcherry could become a major berry crop," says Lippman, a plant scientist at Cold Spring Harbor Laboratory. Some scientists might consider the idea a reach, he adds. "But I think we're now at



How Zachary Lippman and colleagues brought the groundcherry close to domestication using genomics and genetics. Credit: HHMI

Groundcherries (also called "husk cherries" and "strawberry tomatoes") are native to Central and South America and belong to a group of plants known as orphan crops. They're grown as small-scale crops, regionally, or for subsistence. Orphan crops rarely make it into mainstream agriculture because of limitations such as poor shelf life or low productivity.

Improving these [plants](#) for large-scale production

through breeding is a huge investment of time and money, Lippman says. It can take anywhere from a decade to thousands of years to domesticate a crop from the wild. Researchers and growers need to figure out the plant's genetics, adaptations, and how to cultivate it.

That's why few orphan crops become household names. Quinoa, the fluffy, high-protein grain that's now standard in supermarkets, has risen through the agricultural ranks, but other orphan crops like groundnut, teff, and cowpea remain relatively unheard of outside their home regions.

Some consumers may be already be familiar with the groundcherry—like its relative, the tomatillo, the orange fruits are covered in thin, papery husks. They occasionally show up in U.S. farmers markets where "they sell like hotcakes," Lippman says. (Martha Stewart has a recipe that suggests drizzling them with olive oil). But groundcherries are not easy to grow. Now, Lippman thinks that the traits he and Van Eck have introduced may position the fruit for large-scale production.

**An unconventional approach**

The researchers' work lays out how genome editing can give orphan crops like the groundcherry an agricultural advantage. Scientists currently use genome editing to engineer desirable traits in mainstream crops like corn, soybeans, and many others. But until now, no one had used the technique to bolster desirable traits in orphan crops.



Scientists used an approach that combines genomics and genetics to improve the groundcherry's flower productivity, plant shape, and fruit size. Credit: Sebastian Soyk

To ready the groundcherry for store shelves, Lippman and Van Eck needed to address some of the plant's shortcomings. The researchers wanted to make its weedy shape more compact, its fruits larger, and its flowers more prolific. They used a three-pronged approach to tackle the problem: the team sequenced a sampling of the groundcherry's genome, figured out how to use the genome editing tool CRISPR in the plant, and identified the genes underlying the groundcherry's undesirable traits.

That genetic work relied on previous studies Lippman and others have already done in tomatoes. Knowing which genes control certain tomato traits let the researchers find and manipulate those same genes in the distantly related groundcherry.

Next, Lippman wants to fine-tune the groundcherry traits they have begun to improve and manipulate additional characteristics like fruit color and flavor. He notes that some traditional plant breeding will still be necessary to perfect the groundcherry as a mainstream crop. And he can't say exactly when the fruit might make it to market. Releasing a new variety will first require navigating CRISPR intellectual property rights.

Lippman hopes his team's work will inspire researchers to examine other orphan crops with well-studied relatives and consider how those [crops](#), too, have potential for rapid domestication.

"This is about demonstrating what's now possible," he says.

**More information:** Zachary H. Lemmon et al, Rapid improvement of domestication traits in an orphan crop by genome editing, *Nature Plants* (2018). [DOI: 10.1038/s41477-018-0259-x](https://doi.org/10.1038/s41477-018-0259-x)

Provided by Howard Hughes Medical Institute

APA citation: This wild plant could be the next strawberry (2018, October 1) retrieved 20 September 2020 from <https://phys.org/news/2018-10-wild-strawberry.html>

*This document is subject to copyright. Apart from any fair dealing for the purpose of private study or research, no part may be reproduced without the written permission. The content is provided for information purposes only.*