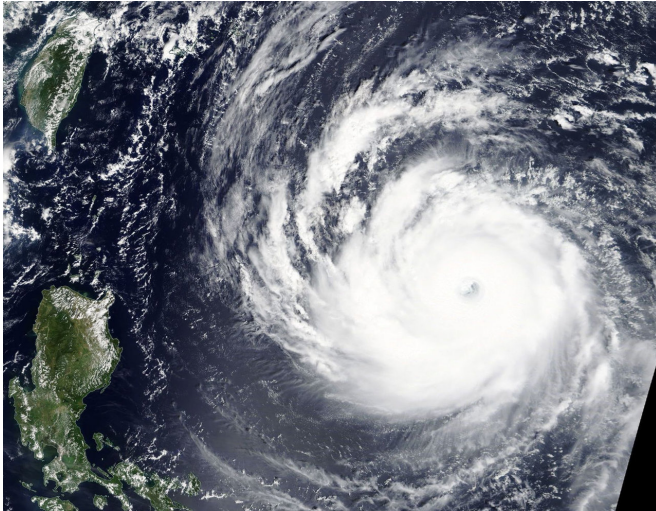


NASA's Terra Satellite glares at the 37-mile wide eye of Super Typhoon Trami

24 September 2018



of Super Typhoon Trami was located near latitude 19.4 degrees north and longitude 129.5 degrees east. It is located 445 nautical miles south-southeast of Kadena Air Base, Okinawa Island, Japan.

The Joint Typhoon Warning Center noted that the storm is moving toward the wet-northwest and this general motion is expected to continue. Maximum sustained winds are near 149.6 mph (130 knots/240.8 kph) with higher gusts.

Trami is expected to peak at 167 mph (145 knots/268 kph) in the next day before beginning a weakening trend.

At 9:50 a.m. EDT (1350 UTC) on Sept. 24, the MODIS instrument aboard NASA's Terra satellite provided a visible-light image of Super Typhoon Trami in the North Western Pacific Ocean. Credit: NASA Worldview, Earth Observing System Data and Information System (EOSDIS).

Provided by NASA's Goddard Space Flight Center

NASA's Terra satellite provided a visible image of Super Typhoon Trami as it continued moving in a northwesterly direction in the Northwestern Pacific Ocean. Terra provided an amazing image of the large eye.

At 9:50 a.m. EDT (1350 UTC) on Sept. 24, the Moderate Resolution Imaging Spectroradiometer or MODIS instrument aboard NASA's Terra satellite provided a visible-light image of Super Typhoon Trami in the North Western Pacific Ocean.

The MODIS image showed that Trami has a symmetric eyewall surrounding a 37 nautical-mile round eye.

At 11 a.m. EDT (1500 UTC) on Sept. 24 the center

APA citation: NASA's Terra Satellite glares at the 37-mile wide eye of Super Typhoon Trami (2018, September 24) retrieved 25 June 2019 from <https://phys.org/news/2018-09-nasa-terra-satellite-glares-mile.html>

This document is subject to copyright. Apart from any fair dealing for the purpose of private study or research, no part may be reproduced without the written permission. The content is provided for information purposes only.