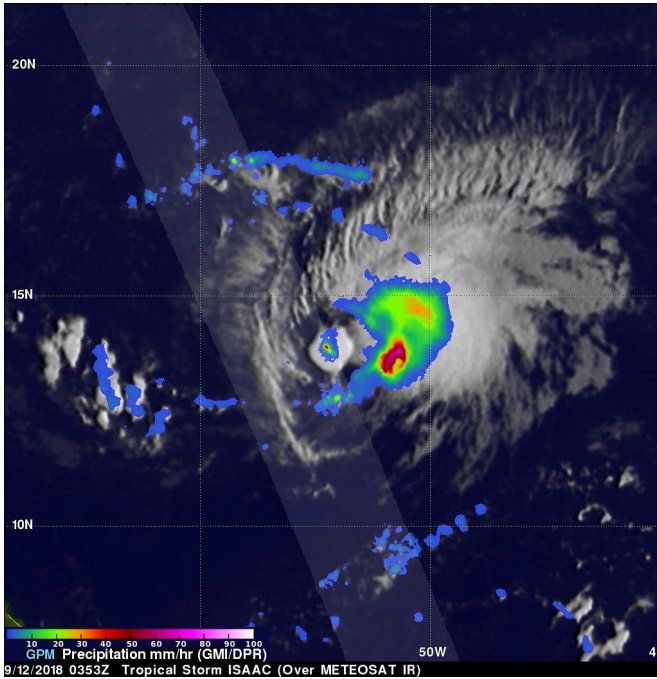


# NASA/JAXA satellite finds heavy rainfall in Tropical Storm Isaac

12 September 2018



On Sept. 11, 2018 at 11:53 p.m. EDT the GPM core observatory satellite found heaviest rainfall within Isaac was located to the southeast of the center. GPM found rain falling at a rate of over 140 mm (5.5 inches) per hour when it sliced through an isolated storm southwest of Isaac's center. The 3D view showed heavy downpours there. Storm tops were found by GPM's radar to reach heights above 16.2 km (10.0 km) in this area. Credit: NASA/JAXA, Hal Pierce

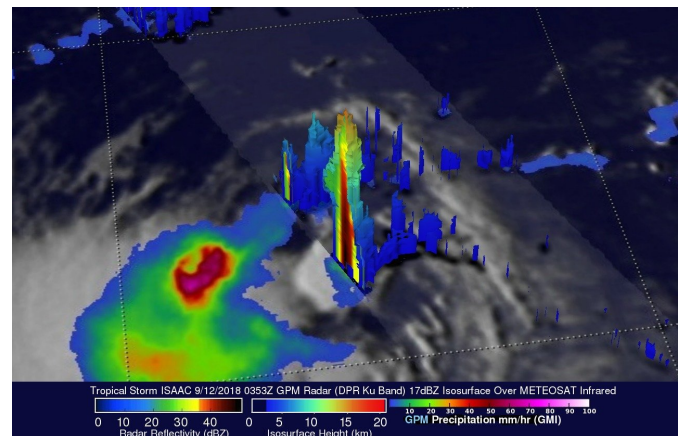
Tropical Cyclones generate a lot of rainfall and the Global Precipitation Measurement mission or GPM satellite and constellation of satellites gather that data and share it with forecasters. GPM recently passed over Tropical Storm Isaac and analyzed its rainfall.

That rainfall is expected to affect the warning areas. The National Hurricane Center posted A Tropical Storm Warning is in effect for Martinique, Dominica and Guadeloupe. A Tropical Storm

Watch is in effect for Antigua, Montserrat, St. Kitts and Nevis, and Saba and St. Eustatius.

GPM is an example of NASA's partnerships with other agencies around the world. GPM is a joint mission between NASA and the Japan Aerospace Exploration Agency or JAXA and the GPM core observatory satellite had an excellent view of tropical storm Isaac on Sept. 11, 2018 at 11:53 p.m. EDT (Sept. 12, 2018 at 0353 UTC).

The satellite revealed that, although expected to weaken, Isaac still contained some powerful convective storms. The GPM satellite's Microwave Imager (GMI) and Dual-Frequency Precipitation Radar (DPR) instruments collected data that were used in an analysis of Isaac's rainfall. Those data showed that the heaviest rainfall within the tropical storm was located to the southeast of Isaac's center of circulation. GPM's radar (DPR Ku Band) measured rain falling at a rate of over 140 mm (5.5 inches) per hour when it sliced through an isolated convective burst southwest of Isaac's center.



On Sept. 11, 2018 at 11:53 p.m. EDT the GPM core observatory satellite found heaviest rainfall within Isaac was located to the southeast of the center. GPM found rain falling at a rate of over 140 mm (5.5 inches) per hour when it sliced through an isolated storm southwest of

Isaac's center. The 3D view showed heavy downpours there. Storm tops were found by GPM's radar to reach heights above 16.2 km (10.0 km) in this area. Credit: NASA/JAXA, Hal Pierce

GPM's radar (DPR ku Band) data were used in at NASA's Goddard Space Flight Center in Greenbelt, Md. to create a 3-D view from the north-northeast to show the 3-D structure of precipitation within the convective burst southwest of ISAAC's center of circulation. DPR found that heavy downpours there. Storm tops were found by GPM's radar to reach heights above 16.2 km (10.0 km) in this area of convection.

At 11 a.m. (1500 UTC), the center of Tropical Storm Isaac was located by a NOAA Hurricane Hunter aircraft near latitude 15.0 degrees north and longitude 54.7 degrees west. Isaac is moving toward the west near 17 mph (28 kph), and this general motion with some decrease in forward is expected to continue through the weekend. Aircraft data indicate that maximum sustained winds remain near 60 mph (95 kph) with higher gusts. Gradual weakening is forecast during the next 72 hours.

Hurricane Florence, tropical storm Isaac and Hurricane Helene are currently active in the Atlantic Ocean. Tropical [storm](#) Isaac is the next tropical cyclone to affect the western Atlantic. It is moving westward toward the Leeward and Windward Islands.

The National Hurricane Center (NHC) predicts that Isaac will pass through the Leeward and Windward Islands and move into the Caribbean Sea over the next few days. The NHC predicts that Isaac will weaken as it encounters moderate vertical shear and nearby dry air.

Provided by NASA's Goddard Space Flight Center  
APA citation: NASA/JAXA satellite finds heavy rainfall in Tropical Storm Isaac (2018, September 12) retrieved 25 September 2021 from <https://phys.org/news/2018-09-nasajaxa-satellite-heavy-rainfall-tropical.html>

*This document is subject to copyright. Apart from any fair dealing for the purpose of private study or research, no part may be reproduced without the written permission. The content is provided for information purposes only.*