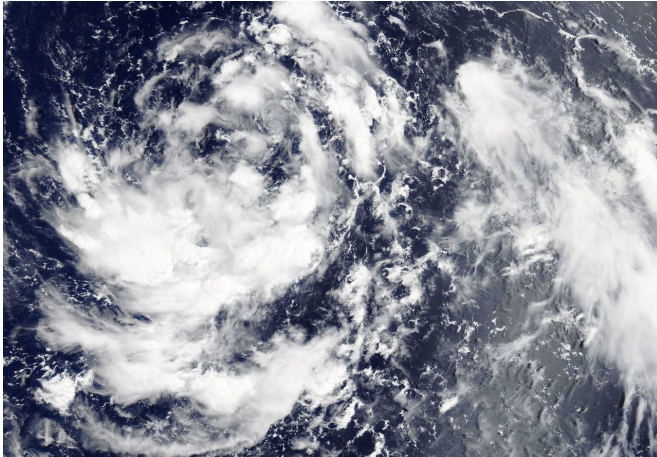


# NASA observes the formation of Tropical Depression 09W in Northwestern Pacific

28 June 2018



mph (7 knots/13 kph).

The Joint Typhoon Warning Center forecast calls for 09W to move on a northwestern track and is then expected to turn to the north. Tropical Depression 09W is expected to become a tropical storm on June 29.

Provided by NASA's Goddard Space Flight Center

On June 28, a visible image of Tropical Depression 09W captured by the MODIS instrument that flies aboard NASA's Aqua satellite showed deep and persistent convection, mostly south of the low level circulation center with limited convection north of the center. Credit: NASA Goddard Rapid Response Team

NASA's Aqua satellite passed over the Northwestern Pacific Ocean early on June 28 and caught an image of newly formed Tropical Depression 09W.

On June 28, the Moderate Resolution Imaging Spectroradiometer or MODIS instrument that flies aboard NASA's Aqua satellite captured a visible image of Tropical Depression 09W. The image showed deep and persistent convection, mostly south of the low level circulation center with limited convection north of the center.

At 11 a.m. EST (1500 UTC) on June 28, Tropical Depression 09W's maximum sustained winds were near 25 knots (28.7 mph/46.3 kph). The center of the storm was located near 20.6 degrees north latitude and 131.2 east longitude. That's about 419 nautical miles south-southeast of Kadena Air Base, Okinawa, Japan. 09W has tracked westward at 8

APA citation: NASA observes the formation of Tropical Depression 09W in Northwestern Pacific (2018, June 28) retrieved 30 November 2021 from <https://phys.org/news/2018-06-nasa-formation-tropical-depression-09w.html>

*This document is subject to copyright. Apart from any fair dealing for the purpose of private study or research, no part may be reproduced without the written permission. The content is provided for information purposes only.*