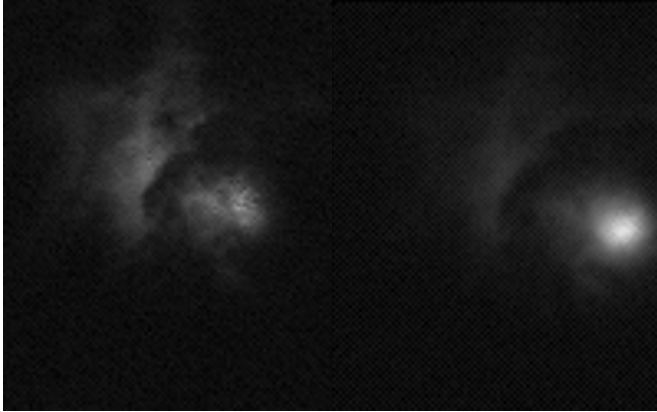


First light for the storm hunter

23 May 2018



The two cameras of the Atmosphere-Space Interactions Monitor, also known as the Space Storm Hunter, captured the strong signature of lightning with unprecedented accuracy 400 kilometres above Earth. As the International Space Station flew over the Indonesian coast of Sumatra on an April night, lightning bursts from a thunderstorm reached the upper layers of the atmosphere. Even with the clouds partly blocking the lightning, the instruments show powerful electrical discharges high in the atmosphere. Scientists believe it is an elve. Elves are the highest of all the 'transient luminous events' known to date. In the blink of an eye concentric rings appear as a dim, expanding glow hundreds of kilometres wide formed by electrons colliding and excited nitrogen molecules. Credit: DTU Space

As the International Space Station flew over the Indonesian coast of Sumatra on an April night, lightning from a thunderstorm reached the upper layers of the atmosphere and its light show was captured by ESA's latest observatory in space.

The Atmosphere-Space Interactions Monitor, also known as the Space Storm Hunter, is completing its initial tests a month after it was installed outside Europe's Columbus laboratory.

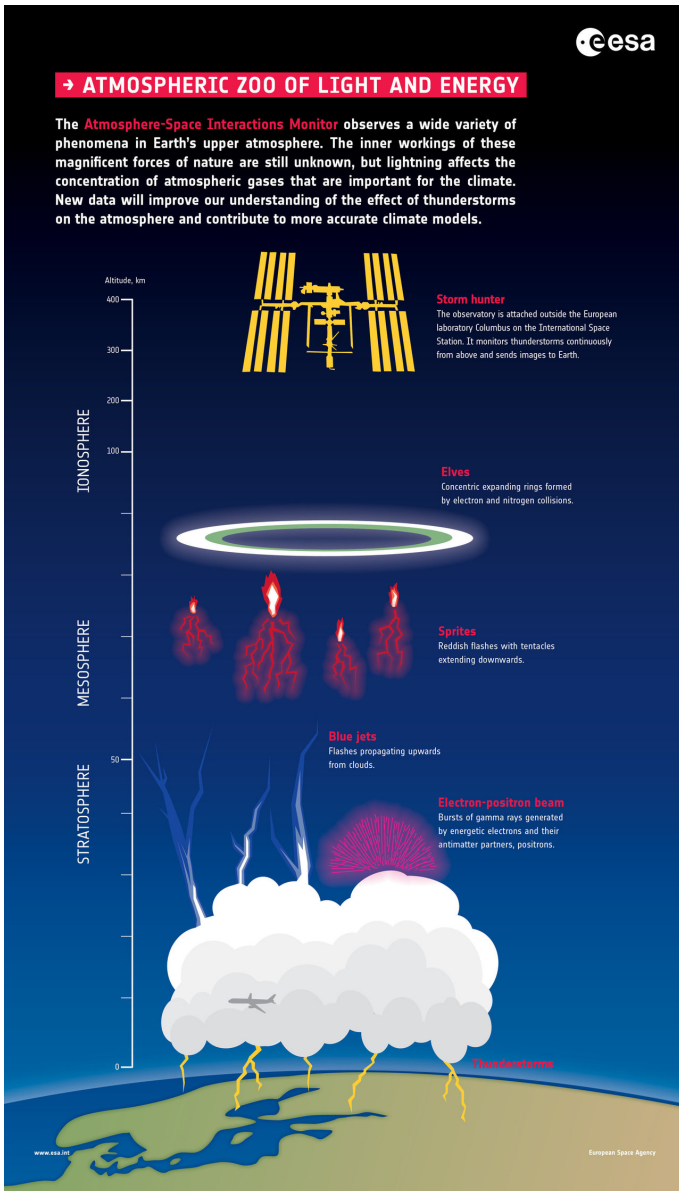
The first images and data captured the strong signature of [lightning](#) with unprecedented accuracy 400 kilometres above Earth.

"We collected 100 000 measurements per second of this amazing force of nature," explains Torsten Neubert, science team coordinator at the Technical University of Denmark, "this is a fantastic example of how powerful our photometers are".

Elves and the power of light

The observatory points straight down at Earth so the atmosphere filters as little of the light as possible. The storm hunter's photometers are hundreds of times more sensitive than an average camera on Earth. In the storm above Indonesia the instruments recorded a spike across three wavelengths.

"Even with the clouds partly blocking the lightning, the instruments show powerful electrical discharges high in the atmosphere. We think it shows an elve," says Torsten.



captured by ESA astronaut Andreas Mogensen from the International Space Station in 2015.

"Thanks to Andreas's discovery we know exactly how to interpret the images," says Torsten. The data will allow scientists to investigate the phenomenon, and distinguish between layers of lightning and other high-energy discharges.

Setting up one of the most complex facilities ever flown on Columbus is a matter of trial and error. Each element is tested, including measures to avoid sunlight burning the sensors.

The first images are from the facilities visual cameras. A second suite of instruments detects high and low energy and has not finished calibration yet.

The first images are only a taster of its capabilities. "The most exciting science is yet to come – we will soon be able to correlate these optical data with terrestrial gamma-ray measurements," says Torsten.

Provided by European Space Agency

The Atmosphere-Space Interactions Monitor (ASIM) is a collection of optical cameras, photometers and an X- and gamma-ray detector designed to look for electrical discharges born in stormy weather conditions that extend above thunderstorms into the upper atmosphere. Credit: European Space Agency

Elves are the highest of all the 'transient luminous events' known to date. In the blink of an eye concentric rings appear as a dim, expanding glow hundreds of kilometres wide formed by electrons colliding and excited nitrogen molecules.

The images are surprisingly similar to a sequence

APA citation: First light for the storm hunter (2018, May 23) retrieved 23 May 2019 from <https://phys.org/news/2018-05-storm-hunter.html>

This document is subject to copyright. Apart from any fair dealing for the purpose of private study or research, no part may be reproduced without the written permission. The content is provided for information purposes only.