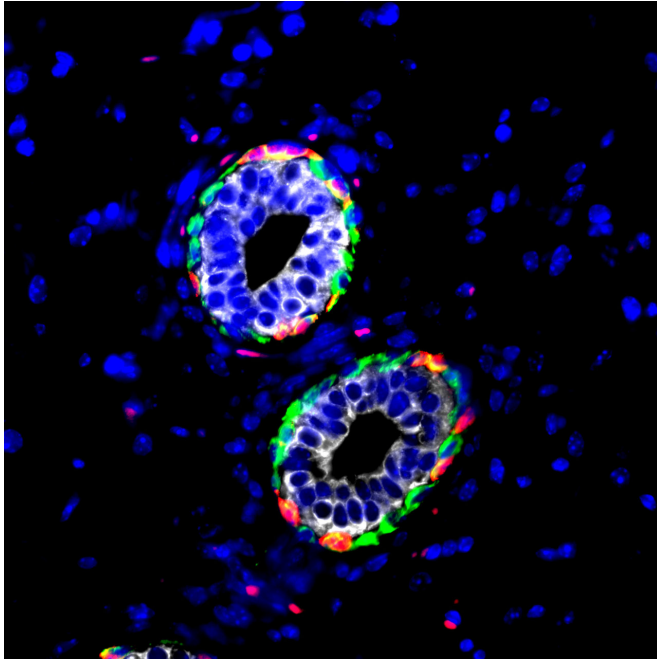


# Immune cell provides cradle for mammary stem cells

17 May 2018



The cross-section of a mouse mammary gland duct taken with a confocal microscope. The mammary stem cells are labeled in pink. Credit: Sushil Kumar, Rumela Chakrabarti and Yibin Kang, Princeton University

A new study finds that one of the toughest characters in the immune system, the macrophage, has a nurturing side, at least when it comes to guarding the developing breast.

The study published online this week in the journal *Science* found that macrophages play an important role in maintaining the mammary gland's stem cell niche, a sort of nursery for the precursors of milk-producing [cells](#) in the breast.

"Learning more about the factors that keep [mammary stem cells](#) alive and healthy may provide insights into the development of breast cancer when such regulation goes awry," said Yibin Kang, the Warner-Lambert/Parke-Davis Professor of

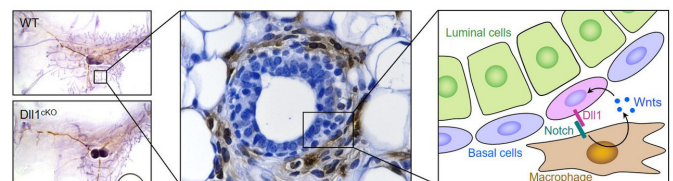
Molecular Biology at Princeton University and an associate director of the Rutgers Cancer Institute of New Jersey, who led the international team that made the discovery. "Our study establishes macrophages as important components of the mammary stem cell niche," he said.

Stem cells are cells that have the potential to mature, or differentiate, into several different types of cells. Mammary stem cells shepherd breast development during puberty and are active during pregnancy and lactation.

The team found that the macrophage, a type of white blood cell whose name translates to "big eater" because it fights infection by engulfing foreign invaders, helps create a special environment, known as a stem-cell niche, that keeps stem cells in their premature state and able to duplicate and differentiate into mature cells when needed.

Stem cells come in various types, from ones that are already committed to develop into certain organs as in the mammary glands, to ones that can form nearly any cell in the body. These cells may also become cancerous, leading to tumors and eventually to the spread of cancer to other organs.

To better understand how mammary stem cells regulate breast development—and how they might turn cancerous—the researchers studied how macrophages interact with mammary stem cells via molecular signaling mechanisms.



Researchers led by Princeton University found that an immune cell known as the macrophage, which normally fights infection by swallowing foreign invaders, nurtures mammary gland stem cells, which drive breast development during puberty and pregnancy. The left panel shows a mammary gland duct that is normal (WT) or is missing the Dll1 gene (Dll1cKO). The middle panel shows the normal duct stained so that the mammary stem cells (blue ovals) and macrophages (brown ovals) are visible. The right panel illustrates how the mammary stem cells (pink) communicate with macrophages (brown), through the binding of Dll1 to Notch receptors and the involvement of Wnt molecules. Credit: *Science/AAAS*

These signaling mechanisms involve a protein called Notch, which acts as a receptor for a signaling molecule called Dll1. Previous research in the Kang lab found that mammary stem cells make a lot of Dll1. In the current study, researchers knocked out the Dll1 gene in mice and found that there is a significant delay in breast development during puberty as well as delayed breast expansion during pregnancy and lactation. Furthermore, the number of mammary stem cells was reduced both during mammary gland development and during pregnancy. Meanwhile, mice with the Dll1 gene intact contained mammary glands with a greater ability to regenerate and to differentiate into mature mammary cells compared to the Dll1-knockout mice.

The mice lacking Dll1 also had fewer macrophage cells in their mammary glands. The researchers found that the binding of Dll1 to Notch2 and Notch3 receptors is important for keeping the number of macrophages high in the mammary stem cell niche, and important for keeping the mammary cells in their stem-cell state.

The researchers also found that the presence of Dll1 is linked to the expression of genes for another signaling pathway involving a molecule called Wnt. The expression of Dll1 caused the macrophages to express genes for Wnt3, 10 and 16, which further enhanced the stem-cell behavior of the mammary stem cells. When the researchers used genetic or chemical methods to inactivate the macrophages in the mammary glands of mice, the mammary stem

cell activity decreased.

"We conclude that the signaling molecule Dll1, which is produced by the mammary stem cells, activates the signal in macrophages to sustain the mammary stem cells," Kang said. "The survival and function of these mammary stem cells and the macrophages are dependent on each other and they communicate through these cellular messaging systems."

The first author and co-corresponding author on the study was Rumela Chakrabarti, who was a postdoctoral research associate at Princeton and is now an assistant professor of biomedical sciences at the University of Pennsylvania School of Veterinary Medicine.

"The 'Notch-Wnt crosstalk' that occurs at the mammary stem cell niche is crucial for the development of the mammary gland," Chakrabarti said, "and this crosstalk may have implications in breast cancer as both these signaling pathways are aberrantly increased in breast cancer."

Jeffrey Rosen, who is the C.C. Bell Professor, Vice-Chair of Molecular and Cellular Biology, and Distinguished Service Professor at Baylor College of Medicine, and who was not directly involved in the study, said, "The study by Yibin Kang and colleagues helps expand our knowledge about the role of macrophages in mammary gland development first demonstrated by other research groups almost two decades ago and more recently by researchers who found that macrophages influence stem-cell activity in the mammary gland.

"The study also raises several questions about the specific roles of multiple Wnt molecules expressed in mammary cells and surrounding cells as well as in tissue-resident macrophages in mammary stem cells," he said. "These studies on normal mammary gland development may provide important clues about the roles of macrophages in [breast](#) cancer progression."

**More information:** "Notch ligand Dll1 mediates cross-talk between mammary stem cells and the macrophageal niche" *Science* (2018). [science.sciencemag.org/cgi/doi ...](https://science.sciencemag.org/cgi/doi/...)

[1126/science.aan4153](https://phys.org/news/2018-05-immune-cell-cradle-mammary-stem.html)

Provided by Princeton University

APA citation: Immune cell provides cradle for mammary stem cells (2018, May 17) retrieved 20 May 2019 from <https://phys.org/news/2018-05-immune-cell-cradle-mammary-stem.html>

*This document is subject to copyright. Apart from any fair dealing for the purpose of private study or research, no part may be reproduced without the written permission. The content is provided for information purposes only.*