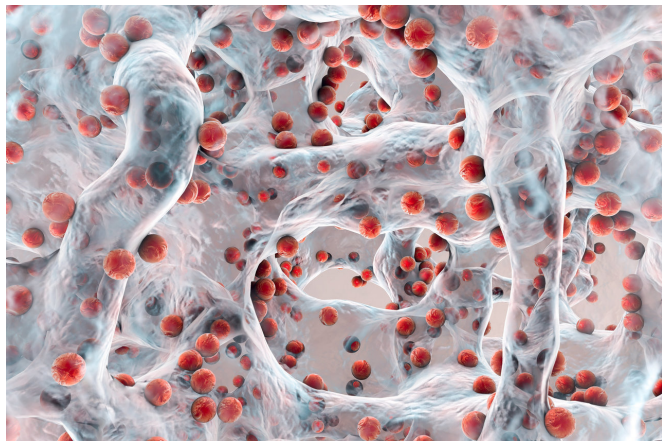


How plastic-eating bacteria actually work—a chemist explains

19 April 2018, by Emily Flashman



Credit: Shutterstock

The plastic bottles we throw away today will be around for [hundreds of years](#). It's one of the key reasons why the mounting plastic pollution problem, which is having a deadly effect on marine life, is so serious.

But scientists recently discovered a strain of bacteria that can literally eat the [plastic](#) used to make bottles, and have now [improved it](#) to make it work faster. The effects are modest – it's not a complete solution to plastic pollution – but it does show how bacteria could help create more environmentally friendly recycling.

Plastics are complex polymers, meaning they are long, repeating chains of molecules that don't dissolve in water. The strength of these chains makes plastic very durable and means it takes a very long time to decompose naturally. If they could be broken down into their smaller, soluble chemical units, then these building blocks could be harvested and recycled to form new plastics in a closed-loop system.

In 2016, [scientists from Japan](#) tested different

bacteria from a bottle recycling plant and found that *Ideonella sakaiensis* 201-F6 could digest the plastic used to make single-use drinks bottles, polyethylene terephthalate (PET). It works by secreting an enzyme (a type of protein that can speed up chemical reactions) known as PETase. This splits certain chemical bonds (esters) in PET, leaving smaller molecules that the bacteria can absorb, using the carbon in them as a food source.

Although [other bacterial enzymes](#) were already known to slowly digest PET, the new enzyme had apparently evolved specifically for this job. This suggests it might be faster and more efficient and so have the potential for use in bio-recycling.

As a result, several teams have been trying to understand exactly how PETase works by studying its structure. In the past 12 months, groups from [Korea](#), [China](#) and the [UK, US and Brazil](#) have all published work showing the structure of the enzyme at high resolution and analysing its mechanisms.

These papers show that the part of the PETase protein that performs the chemical digestion is physically tailored to bind to PET surfaces and works at 30°C, making it suitable for recycling in bio-reactors. Two of the teams also showed that by subtly changing the enzyme's chemical properties so it interacted with PET differently made it work more quickly than the natural PETase.



Plastic crisis. Credit: Shutterstock

There is one worry, though. While any modified bacteria used in bioreactors are likely to be highly controlled, the fact that it evolved to degrade and consume plastic in the first place suggests this material we rely on so heavily may not be as durable as we thought.

If more bacteria began eating plastic in the wild then products and structures designed to last many years could come under threat. The plastics industry would face the serious challenge of preventing its products becoming contaminated with hungry micro-organisms.

Lessons from antibiotics teach us we are slow to outwit [bacteria](#). But perhaps studies such as these will give us a head start.

This article was originally published on [The](#)

Using enzymes from bacteria in bio-reactors to break down plastic for recycling is still easier said than done. The physical properties of plastics make them [very difficult](#) for enzymes to interact with.

The PET used in drinks bottles has a semi-crystalline structure, which means the plastic molecules are tightly packed and difficult for the enzyme to get to. The [latest study](#) shows that the enhanced enzyme probably worked well because the part of the molecule that is involved in the reaction is very accessible, making it easy for the enzyme to attack even the buried PET molecules.

[Conversation](#). Read the [original article](#).

Provided by The Conversation

Modest improvements

The improvements to the PETase activity were not dramatic, and we are nowhere near a solution to our plastic crisis. But this research helps us understand how this promising [enzyme](#) breaks down PET and hints at how we could make it work faster by manipulating its active parts.

It is relatively unusual to be able to engineer enzymes to work better than they have evolved through nature. Perhaps this achievement reflects the fact that the bacteria that use PETase are only recently evolved to survive on this man-made plastic. This could give scientists an exciting opportunity to overtake evolution by engineering optimised forms of PETase.

APA citation: How plastic-eating bacteria actually work—a chemist explains (2018, April 19) retrieved 19 January 2021 from <https://phys.org/news/2018-04-plastic-eating-bacteria-work-a-chemist.html>

This document is subject to copyright. Apart from any fair dealing for the purpose of private study or research, no part may be reproduced without the written permission. The content is provided for information purposes only.