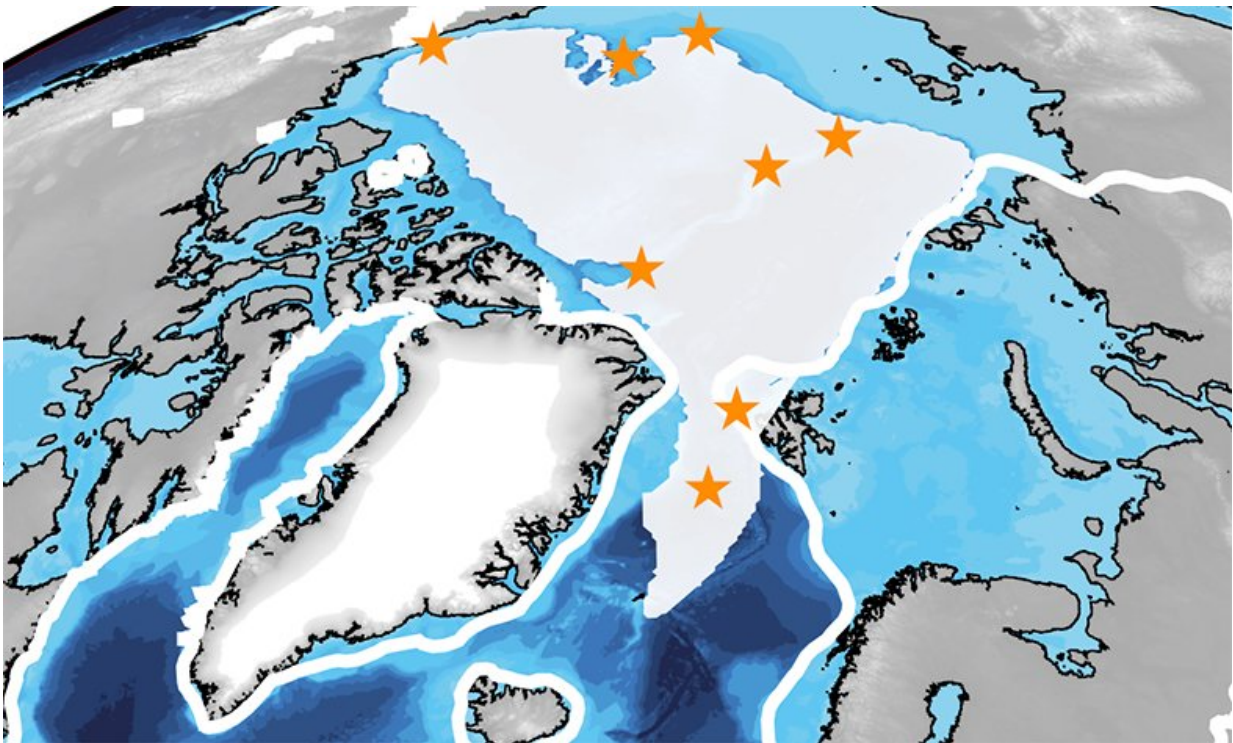


Arctic Ocean may have been covered by an ice shelf nearly double the size of Greenland's ice sheet

April 17 2018, by Mary Hickey



Credit: University of Sheffield

An ice shelf over a kilometre thick once formed over the Arctic Ocean, a new study by researchers from the University of Sheffield has revealed.

The study is the first of its kind and strongly supports the theory that a floating [ice shelf](#) might have formed in the Arctic Ocean during some of the Earth's Ice Ages.

The research, led by Dr. Ed Gasson, from the University of Sheffield's Ice and Climate research group published today (17 April 2017) in *Nature Communications*, used a numerical [ice sheet/shelf](#) computer model to show that an ice shelf in the Arctic Basin could only have become a kilometre thick if it covered the entire basin. This model also provided an estimate of the ice shelf's size – up to 1.7 times the size of Greenland's current ice [sheet](#).

The study also found that the Arctic ice shelf might have increased the volume of ice sheets on land surrounding the Arctic Ocean. Its presence may also explain discrepancies in sea level reconstructions.

Dr. Ed Gasson from the University of Sheffield's Department of Geography said: "The study is important because it opens up further research into what role this previously missing piece played in Earth's glacial periods. Although these periods of Earth's history have been extensively studied already there are many things that are not fully explained. What impact an Arctic ice shelf had on the climate system is a big unanswered question."

The results are consistent with a recent discovery of ice scours – a narrow ditch on a seabed caused by the movement of pack ice—on the Lomonosov Ridge, which runs across the middle of the Arctic Basin. This indicated that a [floating ice shelf](#) might have formed in the Arctic Ocean during some of the Earth's Ice Ages.

The hypothesis of an Arctic ice shelf was first put forward in the 1970s, but there was limited evidence supporting it. When ice reaches the seafloor it causes erosion. Although ice scour marks have been found on

the Arctic seafloor previously, it was argued whether the keels of icebergs or an ice shelf caused the scours. However, a recent research cruise to the Arctic discovered new traces that had the tell-tale signs of a former ice shelf.

The ice shelf most likely formed during the penultimate glacial period around 140,000 years ago. There is no evidence yet that an ice shelf also formed during the Last Glacial Maximum around 20,000 years ago, when much of North America and northern Europe was covered by ice sheets. The study suggests that this could be due to differences in the Earth's orbit or because the Eurasian ice sheet did not expand as fully towards the Arctic Basin. One challenge with detecting floating ice shelves is that they can leave no traces unless they ground on the seafloor, leaving open the possibility that a thinner ice shelf also formed during the Last Glacial Maximum.

More information: Edward G. W. Gasson et al. Numerical simulations of a kilometre-thick Arctic ice shelf consistent with ice grounding observations, *Nature Communications* (2018). [DOI: 10.1038/s41467-018-03707-w](https://doi.org/10.1038/s41467-018-03707-w)

Provided by University of Sheffield

Citation: Arctic Ocean may have been covered by an ice shelf nearly double the size of Greenland's ice sheet (2018, April 17) retrieved 19 September 2024 from <https://phys.org/news/2018-04-arctic-ocean-ice-shelf-size.html>

<p>This document is subject to copyright. Apart from any fair dealing for the purpose of private study or research, no part may be reproduced without the written permission. The content is provided for information purposes only.</p>
--