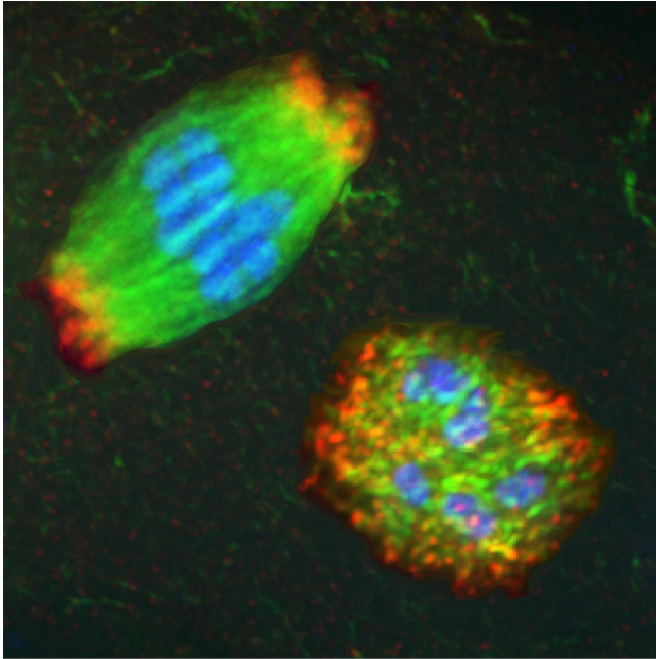


New insights into leading cause of miscarriage, birth defects discovered

2 October 2017, by Kristin Samuelson



A spindle (top, left) is an elaborate football-shaped structure that physically separates chromosomes during cell division, ensuring that each newly divided cell obtains the correct amount of genetic material. The blue represents the chromosomes, and two spindle components are shown in green and red; green are fibers called microtubules that attach to the chromosomes, and the red protein marks the two spindle ends. The bottom right image represents a spindle in which two proteins -- KLP-15 and KLP-16 -- were knocked out in Sadie Wignall's research, causing the spindle structure to collapse into a messy round ball. Credit: Northwestern University

Two recent Northwestern University studies shed new light on the mystery of the leading cause of birth defects and miscarriage, laying the foundation for further research in an understudied but crucially important field of genetic study.

The studies look at what happens during the process that produces egg [cells](#) (oocytes), which

later become embryos when they are fertilized. Ten to 25 percent of human embryos contain the wrong number of chromosomes because the egg cell has not divided properly, which is a problem unique to egg cells.

These mistakes are the leading cause of miscarriages and [birth defects](#) such as Down syndrome, and the incidence of these errors rises dramatically as women age. Understanding why egg cells are more prone to this division error is critical, given that women are increasingly choosing to start families at later ages.

The first study, published in the *Journal of Cell Biology* in March, revealed that oocytes use an innovative strategy to detect and prevent errors during [cell division](#), while the second study, published Sept. 26 in *PLOS Genetics*, identified new proteins essential for the cell-division process and discovered that a back-up protein kicks in when the division is failing to help ensure the embryo is receiving the correct number of chromosomes.

"Taken together, these two studies have revealed to us how vastly different egg cells are from every other type of cell, which could shed important new light on why the reproductive process can be so error prone," said senior author Sadie Wignall, assistant professor of molecular biosciences at Northwestern's Weinberg College of Arts and Sciences. "Solving this mystery would be a first step to prolonging a woman's fertile years."

Wignall researches a structure called the spindle, an elaborate football-shaped structure that physically separates the chromosomes during cell division. In most cells, structures called centrosomes help to organize the spindle, ensuring that it can precisely separate chromosomes to send the correct number of chromosomes to each newly divided cell. Spindles in [egg cells](#), however, lack centrosomes. This "acentrosomal" process is highly

understudied compared to other types of cell division, leading to important unanswered questions about why it is much more prone to error when dividing.

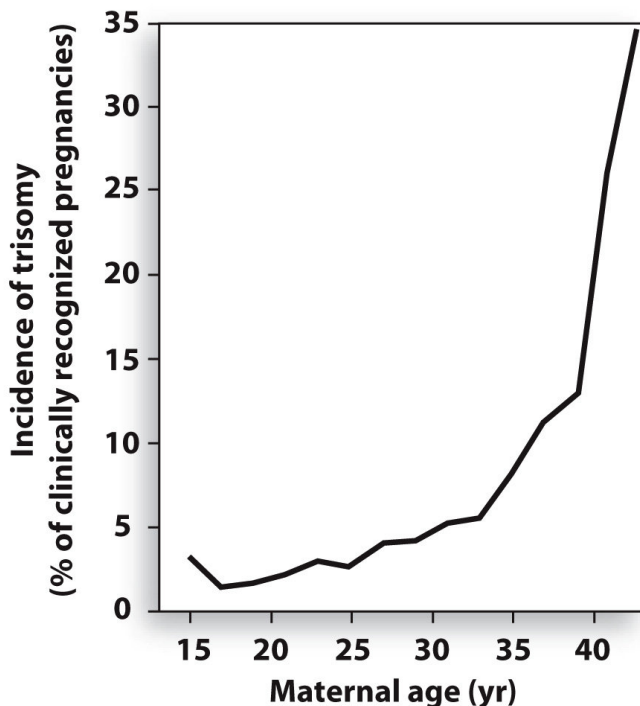


Figure 19-38
Molecular Cell Biology, Eighth Edition
© 2016 W. H. Freeman and Company

This line graph illustrates how the incidence of birth defects or miscarriages caused by an incorrect number of chromosomes increases as women age, and dramatically increases after age 35. Credit: *Molecular Cell Biology*, eighth edition -- textbook

In the study published in September, Wignall and her team discovered that in the absence of centrosomes, two proteins - KLP-15 and KLP-16 - were essential for dividing the cells. The researchers knocked out these two proteins to find that instead of forming the normal football-shaped spindle, the spindle structure collapsed into a messy round ball. Much to their surprise, despite this early defect, a back-up protein then jumped in and helped separate the chromosomes to the two ends of the cell.

"We were surprised to find that this protein came to

the rescue and worked as a backup to properly organize the spindle," Wignall said.

The question remains why 10 to 25 percent of embryos still end up not being viable if there is this backup process in place in oocytes. One theory, Wignall said, is that this backup protein changes or depletes as women age.

"While these basic cell mechanisms might be difficult to grasp, they directly impact female reproduction and infertility," Wignall said. "My lab focuses on this with the hope that one day, our research can help people experiencing fertility issues at in vitro fertilization clinics."

Wignall performs her research on oocytes using small worms called *C. elegans* since they are a powerful research organism for genetic studies. However, her lab is also building on these findings to perform parallel studies in mice in collaboration with Teresa Woodruff, a reproductive scientist and director of the Women's Health Research Institute at Northwestern University Feinberg School of Medicine. The next step will be to study these mechanisms in human oocytes.

Amanda C. Davis-Roca, a graduate student in Wignall's lab, was the first author on the study published in March, "*Caenorhabditis elegans* oocytes detect meiotic errors in the absence of canonical end-on kinetochore attachments." Timothy J. Mullen, another graduate student in Wignall's lab, was first author on the study published in September, "Interplay between microtubule bundling and sorting factors ensures acentriolar spindle stability during *C. elegans* oocyte meiosis."

More information: Amanda C. Davis-Roca et al, *Caenorhabditis elegans* oocytes detect meiotic errors in the absence of canonical end-on kinetochore attachments, *The Journal of Cell Biology* (2017). DOI: [10.1083/jcb.201608042](https://doi.org/10.1083/jcb.201608042)

Provided by Northwestern University

APA citation: New insights into leading cause of miscarriage, birth defects discovered (2017, October 2) retrieved 24 June 2019 from <https://phys.org/news/2017-10-insights-miscarriage-birth-defects.html>

This document is subject to copyright. Apart from any fair dealing for the purpose of private study or research, no part may be reproduced without the written permission. The content is provided for information purposes only.