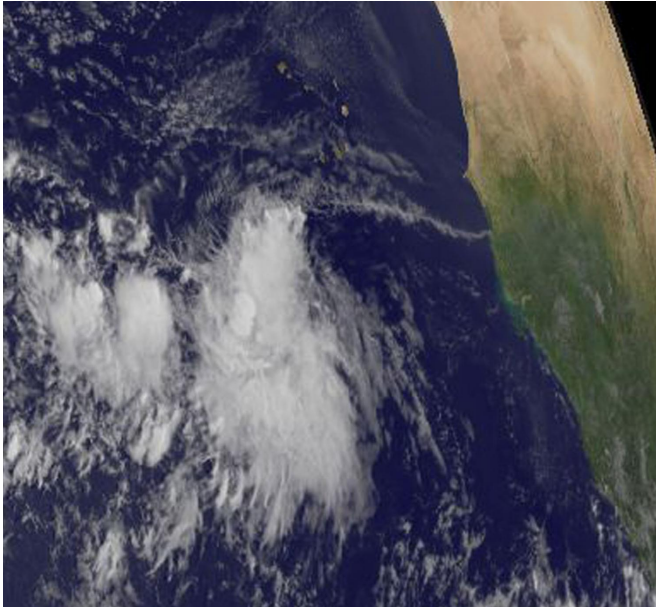


Satellite sees Atlantic Tropical Depression 14 forms off Africa's west coast

15 September 2017



On Sept. 15, 2017 at 7:45 a.m. EDT (1145 UTC), NOAA's GOES East satellite captured this visible image of the Tropical Depression 14 off the coast of western Africa. Credit: NASA/NOAA GOES Project

NOAA's GOES East satellite captured a visible image of the latest tropical cyclone to form in the Eastern Atlantic Ocean. Tropical Depression 14E formed, despite battling northerly wind shear.

On Sept. 15, 2017 at 7:45 a.m. EDT (1145 UTC), NOAA's GOES East satellite captured this visible image of the Tropical Depression 14 off the coast of western Africa. The [visible image](#) showed curved bands of thunderstorms mostly south of the center. That's because the storm is being affected by northerly vertical wind shear, pushing clouds and storms away from the center.

The NASA/NOAA GOES Project at NASA's Goddard Space Flight Center in Greenbelt, Maryland created an image. NOAA manages the

GOES series of satellites and the NASA/NOAA GOES Project creates images and animations from the data.

At 11 a.m. EDT (1500 UTC) the National Hurricane Center said the center of Tropical Depression Fourteen (TD14) was located near 11.4 degrees north latitude and 28.3 degrees west longitude. That's about 430 miles (690 km) southwest of the Cabo Verde Islands. The depression is moving toward the west-northwest near 10 mph (17 kph), and a west or west-northwest motion is forecast during the next couple of days. Maximum sustained winds are near 35 mph (55 kph) with higher gusts. The estimated minimum central pressure is 1008 millibars.

The [depression](#) forecast to become a [tropical storm](#) later today. When it does become a tropical [storm](#), it would be named Lee.

For updates on Tropical Depression 14, visit: <http://www.nhc.noaa.gov>.

Provided by NASA's Goddard Space Flight Center

APA citation: Satellite sees Atlantic Tropical Depression 14 forms off Africa's west coast (2017, September 15) retrieved 26 January 2021 from <https://phys.org/news/2017-09-satellite-atlantic-tropical-depression-africa.html>

This document is subject to copyright. Apart from any fair dealing for the purpose of private study or research, no part may be reproduced without the written permission. The content is provided for information purposes only.