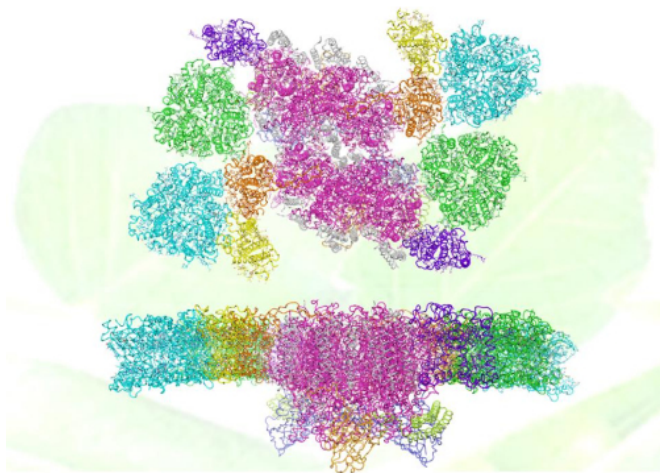


New study provides high-resolution insights into plants' light harvesting process under low light

28 August 2017



The overall structure of C2S2M2-type PSII-LHCII supercomplex with background of pea leaves (up: top-view; down: side-view). Subunits are colored differently: the main transmembrane core subunit, magenta; small intrinsic core subunit, white; oxygen evolving complex subunit PsbO (blue), PsbP (light orange) and PsbQ (lime); peripheral light harvesting complexes S-LHCII (green), M-LHCII (cyan), CP29 (orange), CP26 (purple) and CP24 (yellow). Credit: IBP

Photosynthesis is a biological process mediating the conversion of solar energy into chemical energy. Oxygenic photosynthesis performed by plants, algae and cyanobacteria is one of the most amazing chemical reactions on the planet. It provides food and energy for nearly all living organisms, and also contributes to the formation of the atmosphere and maintenance of the carbon-oxygen balance on the earth.

In [plants](#), the primary light reaction of photosynthesis initiates at photosystem II (PSII), a membrane-embedded supramolecular machine responsible for catalyzing the water-splitting

reaction. Surrounding the PSII, a number of peripheral antenna complexes dynamically associate with it to form the PSII-LHCII supercomplexes of variable sizes in response to different light conditions.

The C2S2M2-type supercomplex is known as the largest stable form of PSII-LHCII supercomplex isolated from Arabidopsis and peas, and crucial for plants to achieve optimal light-harvesting efficiency when they grow under low-light conditions. Structural analysis of the C2S2M2 supercomplex is a pivotal step toward understanding the molecular mechanisms underlying processes of light harvesting, energy transfer and PSII functional regulation in plants.

CHANG Wenrui-LI Mei's group, ZHANG Xinzheng's group and LIU Zhenfeng's group from the Institute of Biophysics (IBP) at CAS used cryo-electron microscopy (cryo-EM) to resolve structures of C2S2M2-type PSII-LHCII supercomplex from peas at 2.7 and 3.2 Å resolution, respectively.

The 2.7 Å resolution structure of C2S2M2 supercomplex represents the highest resolution structure of membrane protein complexes solved through single-particle cryo-EM method so far. The supercomplex has a total molecular mass of 1.4 megadalton and forms a homodimer. Each monomeric PSII-LHCII contains 28 or 27 protein subunits, and binds 159 chlorophylls, 44 carotenoids and numerous other cofactors.

The overall structural features and the arrangement of each individual subunit, as well as the sophisticated pigment network and the complete [energy transfer](#) pathways within the supercomplex have been revealed in great detail through this study. In addition, comparison of the two C2S2M2 structures resolved at different states suggest the

potential mechanism of functional regulation on the light-harvesting process and the oxygen-evolving activity of plant PSII.

The study, titled "Structure and assembly mechanism of plant C2S2M2-type PSII-LHCII supercomplex," was published in *Science* on Aug. 25, 2017. The breakthrough was achieved through continuous and persistent efforts by the team from IBP after their previous work on the cryo-EM [structure](#) of spinach C2S2-type PSII-LHCII supercomplex was published in *Nature* last year.

More information: "Structure and assembly mechanism of plant C2S2M2-type PSII-LHCII supercomplex," *Science* (2017). [DOI: 10.1126/science.aan0327](#)

Provided by Chinese Academy of Sciences

APA citation: New study provides high-resolution insights into plants' light harvesting process under low light (2017, August 28) retrieved 1 October 2020 from <https://phys.org/news/2017-08-high-resolution-insights-harvesting.html>

This document is subject to copyright. Apart from any fair dealing for the purpose of private study or research, no part may be reproduced without the written permission. The content is provided for information purposes only.