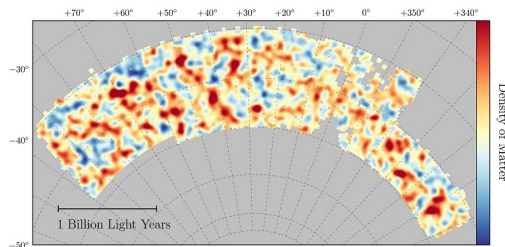


Standard model of the universe withstands most precise test by Dark Energy Survey (Update)

3 August 2017



Map of dark matter made from gravitational lensing measurements of 26 million galaxies in the Dark Energy Survey. Red regions have more dark matter than average, blue regions less dark matter. Credit: Chihway Chang/University of Chicago/DES collaboration

Astrophysicists have a fairly accurate understanding of how the universe ages: That's the conclusion of new results from the Dark Energy Survey (DES), a large international science collaboration, including researchers from the Department of Energy's SLAC National Accelerator Laboratory, that put models of cosmic structure formation and evolution to the most precise test yet.

The survey's researchers analyzed light from 26 million galaxies to study how structures in the universe have changed over the past 7 billion years - half the age of the universe. The data were taken with the DECam, a 570-megapixel camera attached to the 4-meter Victor M. Blanco Telescope at the Cerro Tololo Inter-American Observatory in Chile.

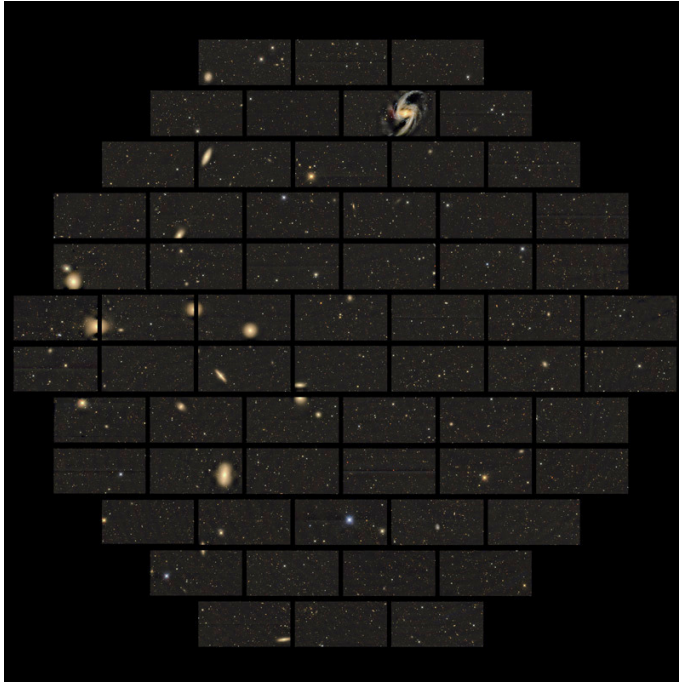
Previously, the most precise test of cosmological models came from measurements with the European Space Agency's Planck satellite of what is known as the [cosmic microwave background](#)

(CMB) - a faint glow in the sky emitted 380,000 years after the Big Bang.

"While Planck looked at the structure of the very early universe, DES has measured structures that evolved much later," said Daniel Gruen, a NASA Einstein postdoctoral fellow at the Kavli Institute for Particle Astrophysics and Cosmology (KIPAC), a joint institute of Stanford University and SLAC. "The growth of these structures from the early ages of the universe until today agrees with what our models predict, showing that we can describe cosmic evolution very well."

Gruen will present the results, which are based on the first year of data from the 5-year-long survey, today at the 2017 Division of Particles and Fields meeting of the American Physical Society at the DOE's Fermi National Accelerator Laboratory.

KIPAC faculty member Risa Wechsler, a founding member of DES, said, "For the first time, the precision of key cosmological parameters coming out of a galaxy survey is comparable to the ones derived from measurements of the cosmic microwave background. This allows us to test our models independently and combine both approaches to obtain parameter values with unprecedented precision."



Images taken by the DES Collaboration with the DECam mounted on the Blanco Telescope. Credit: DES Collaboration

led to the largest map ever constructed for the distribution of mass - both regular and dark matter - in the universe, as well as its evolution over time.

"Within an error bar of less than 5 percent, the combined Planck and DES results are consistent with Lambda-CDM," Wechsler said. "This also means that, so far, we don't need anything but a constant form of [dark energy](#) to describe the expansion history of the universe."

Key Contributions from KIPAC

In addition to Gruen, who led the weak lensing working group, and Wechsler, whose group provided realistic simulations of the survey critical to testing several aspects of the cosmological analysis, a large number of KIPAC scientists, postdoctoral fellows, graduate students and alumni have made crucial contributions to DES - from building the instrument to developing theory and simulations and analyzing the data.

Largest Map of Mass Distribution

The standard model of cosmology, called Lambda-CDM, includes two key ingredients. Cold dark matter (CDM), an invisible form of matter that is five times more prevalent than regular matter, clumps together and is at the heart of the formation of structures such as galaxies and galaxy clusters. Lambda, the cosmological constant, describes the accelerated expansion of the universe, driven by an unknown force referred to as dark energy.

Astrophysicists need precise tests of the model because its ingredients are not completely certain. Dark matter has never been directly detected. Dark energy is even more mysterious, and it's not known whether it actually is a constant or changes over time.

DES has now succeeded in carrying out such a precision test. The scientists used the fact that images of faraway galaxies get slightly distorted by the gravity of galaxies in the foreground - an effect known as weak gravitational lensing. This analysis



Blanco Telescope dome and Milky Way. Credit: Reidar Hahn/Fermi National Accelerator Laboratory

Postdoctoral fellow Elisabeth Krause, for example, leads the DES theory and combined probes working group. In that role, she led the charge in developing theoretical models that match the experimental precision obtained with the DES data. This involved writing computer codes that calculate what weak gravitational lensing should look like for

a given model.

"Different people develop slightly different codes that are meant to do the same thing," she said. "I helped bring code developers together to cross-check their results and to make sure that we get the most precise theory codes possible."

Another key to the creation of the mass distribution map was to accurately determine the distances to the observed galaxies - information that is usually derived from independent surveys that analyze the properties of light coming from those objects or from exploding stars.

"We've shown that we can use the color of certain red galaxies - red is the color they would have if you were right in front of them - to determine how far they are away," said SLAC staff scientist Eli Rykoff, who had a leading role in this part of the analysis. "It turns out that if we map where these red galaxies are in the sky, we can use them to calibrate the distances of the lenses and background galaxies used in the study."



This image of the NGC 1398 galaxy was taken with the Dark Energy Camera. This galaxy lives in the Fornax cluster, roughly 65 million light-years from Earth. It is 135,000 light-years in diameter, just slightly larger than our own Milky Way galaxy, and contains more than a billion stars. Credit: Dark Energy Survey

Toward Even Deeper Cosmic Insights

In the near future, more DES data will allow

astrophysicists to test their [cosmological models](#) with even more precision. The analysis of data collected during the first three years of the survey will begin soon, and the fifth year of observations will also soon be underway.

With even better data, the researchers said, we might find out if the relatively simple Lambda-CDM model needs to be modified.

"The methods developed for DES and the experience its researchers are gaining along the way will also benefit the natural flow of ever-evolving experiments," said KIPAC faculty member David Burke, head of SLAC's DES group.

Both will prepare scientists for future surveys, including ones with the Large Synoptic Survey Telescope (LSST). With its 3.2-gigapixel camera, which is under construction at SLAC, astrophysicists will be able to explore the depths of our universe like never before.

More information:

www.darkenergysurvey.org/des-y...ology-results-papers

Provided by SLAC National Accelerator Laboratory

APA citation: Standard model of the universe withstands most precise test by Dark Energy Survey (Update) (2017, August 3) retrieved 24 October 2021 from <https://phys.org/news/2017-08-standard-universe-precise-dark-energy.html>

This document is subject to copyright. Apart from any fair dealing for the purpose of private study or research, no part may be reproduced without the written permission. The content is provided for information purposes only.