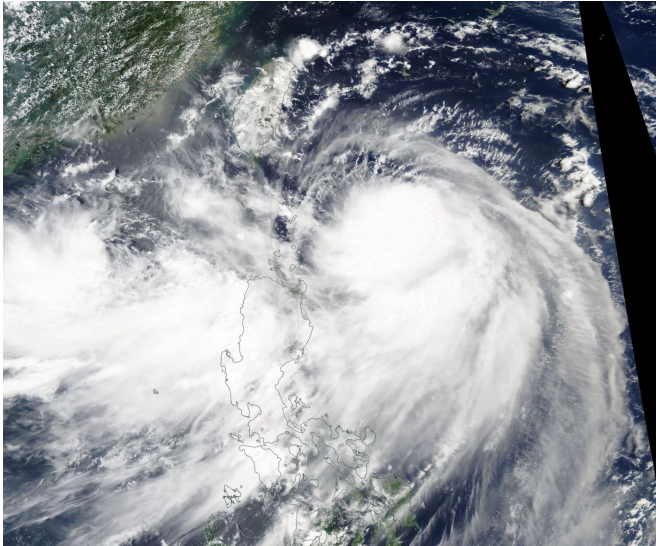


NASA's Aqua satellite tracks Typhoon Nesat headed toward Taiwan

28 July 2017



Typhoon Warning Center said that Typhoon Nesat's maximum sustained winds were near 65 knots (75 mph/120 kph). At that time the center was located near 20.6 degrees north latitude and 125.3 degrees east longitude. That's about 342 nautical miles southeast of Taipei, Taiwan. Nesat was moving toward the northwest near 8 knots (9.7 mph/14.8 kph).

Nesat will move northwest while intensifying. The system will peak at 75 knots (85 mph/139 kph) before approaching Taiwan on July 29 and making final landfall in China on July 30.

Provided by NASA's Goddard Space Flight Center

On July 27 NASA's Aqua satellite captured a visible image of Typhoon Nesat northeast of the Philippines in the Northwestern Pacific Ocean. Credit: NASA Goddard MODIS Rapid Response Team

NASA's Aqua satellite passed over Typhoon Nesat as the storm continued moving north toward Taiwan.

On July 27 at 1:30 p.m. local time the Moderate Resolution Imaging Spectroradiometer or MODIS instrument aboard NASA's Aqua satellite captured a [visible image](#) of the storm that showed powerful thunderstorms surrounding the [center](#) of circulation and a large thick band of storms wrapping into the center from the south and east. Although a ragged eye could not be seen in the MODIS imagery, it was visible using other satellite data.

Nesat is moving through the Northwestern Pacific Ocean and is expected to make landfall and cross central Taiwan on July 29.

On July 28 at 5 a.m. EDT (0900 UTC) the Joint

APA citation: NASA's Aqua satellite tracks Typhoon Nesat headed toward Taiwan (2017, July 28) retrieved 28 November 2022 from <https://phys.org/news/2017-07-nasa-aqua-satellite-tracks-typhoon.html>

This document is subject to copyright. Apart from any fair dealing for the purpose of private study or research, no part may be reproduced without the written permission. The content is provided for information purposes only.