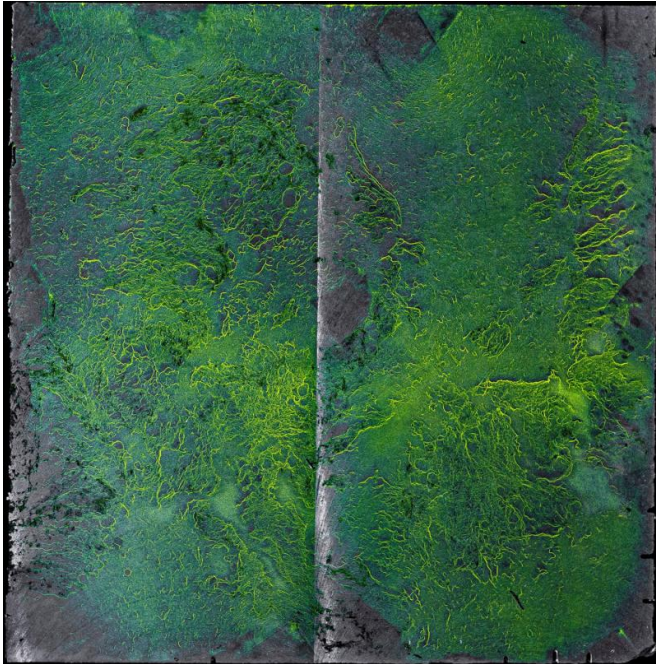


# Avoiding material inclusions such as dross in wind turbines

1 June 2017



Dross in thick-walled cast iron with spheroidal graphite: casting surface after the fluorescent magnetic powder test. Credit: Fraunhofer LBF

Wind turbines rise into the sky on enormous feet. To ensure these giants can reliably generate electricity for many years to come, the iron processing industry must manufacture their massive components in a stable, resource-saving and yet cost-effective way. However, material inclusions such as dross are often unavoidable while casting. Fraunhofer researchers are currently working to detect and analyze such material defects.

Wind turbines should be environmentally friendly, highly efficient, cost-effective, and able to function reliably for at least 20 years. However, as turbines become increasingly powerful, the demands on the components used are growing, and so is the risk of material fatigue. Material defects such as

inclusions from slag, known as dross, are considered undesirable because they greatly reduce the load-bearing capacity of cast iron components with spheroidal graphite. This special kind of cast iron is also used to make a wind turbine's mainframe and rotor hubs. Manufacturing such components is difficult due to the build-up of dross that often occurs despite tricks in casting techniques.

That is why foundries make sure they liberally remove all the dross and release only dross-free products for use. Since defects of this kind are usually found on the surface of the cast part or a few centimeters below the casting skin, the raw cast part is grinded laboriously by hand. "Compared to other [material defects](#), such as cavities in the component, there is as yet no way of reliably dealing with dross," says Dr. Christoph Bleicher from the Fraunhofer Institute for Structural Durability and System Reliability LBF in Darmstadt. Since the beginning of 2015, he has been the consortium leader of the "unverDROSSen" project, which aims to move away from the customary requirements for dross-free products and thus dispense with the time-consuming post-production work.

"To be able to do this, we have to provide manufacturers and users with a sound measurement concept so they can evaluate the degree and type of dross. That's why, together with the Fraunhofer Institute for Nondestructive Testing IZFP in Saarbrücken, we're developing an experimentally proven dross strength classification system," says Bleicher.

## Minimizing rework

Fraunhofer experts have now succeeded in developing test methods with the aid of which they can detect, display and characterize dross. They use mechanized ultrasound testing to display and measure the distribution in a three-dimensional

format. They also test processed component surfaces using magnetic and electromagnetic methods. With these methods, they scan not just the cast underside, as is customary, but also the dross-afflicted topside. "Using our nondestructive testing technology, we measured cuboids each measuring 500 x 500 x 200 millimeters. We found that the dross distribution in the test pieces varied extremely. Sometimes the material defect extends across a very large surface area, and it can range in depth from a few millimeters to several centimeters," reports Fabian Weber from Fraunhofer IZFP. "Our results have not allowed us to derive any kind of regularity." This means components will have to be examined individually in the future, too. However, with the valuable information that nondestructive IZFP test technologies provide, manufacturers can at least minimize necessary rework.

### **Classifying strength**

In the second step of the project, Fraunhofer IZFP data will be used to assess structural durability. For this purpose, researchers from Fraunhofer LBF extract fatigue specimens, each measuring exactly 150 x 35 millimeters, from the delivered test pieces. "On the basis of static and cyclic test methods, we determine strength values for the different manifestations. To do this, we place the sample in one of our [test](#) benches, pull it apart and then press each sample back together up to ten million times. Such experiments run for about ten days," explains Bleicher. A total of around 500 fatigue tests are planned during the three-year long project.

By the end of 2017, the researchers want to find out if and to what extent dross-afflicted samples weaken when put under a load such that they might fail when at maximum load. It is a known fact that dross leads to crack formation, which greatly reduces the component's cyclic load bearing capacity. "However, such cast-iron components are completely adequate for other purposes," says Bleicher. "In the future, we will offer a concept for reliably handling material defects in component design, manufacture and release of large cast components made of cast iron with spheroidal graphite. This will apply not just to wind farms but to all plant and mechanical engineering sector,"

concludes Bleicher with certainty.

Provided by Fraunhofer-Gesellschaft

APA citation: Avoiding material inclusions such as dross in wind turbines (2017, June 1) retrieved 18 October 2019 from <https://phys.org/news/2017-06-material-inclusions-dross-turbines.html>

*This document is subject to copyright. Apart from any fair dealing for the purpose of private study or research, no part may be reproduced without the written permission. The content is provided for information purposes only.*