

# New approach predicts threats to rainforests

May 25 2017

---



Photo of a Sunda clouded leopard captured as part of a WildCRU study into their ecology in Malaysian Borneo. Deforestation is one of the biggest threats to clouded leopards Credit: Andrew Hearn, WildCRU

With rain forests at risk the world over, a new collaboration is equipping

conservationists with the tools to predict and plan for future forest loss.

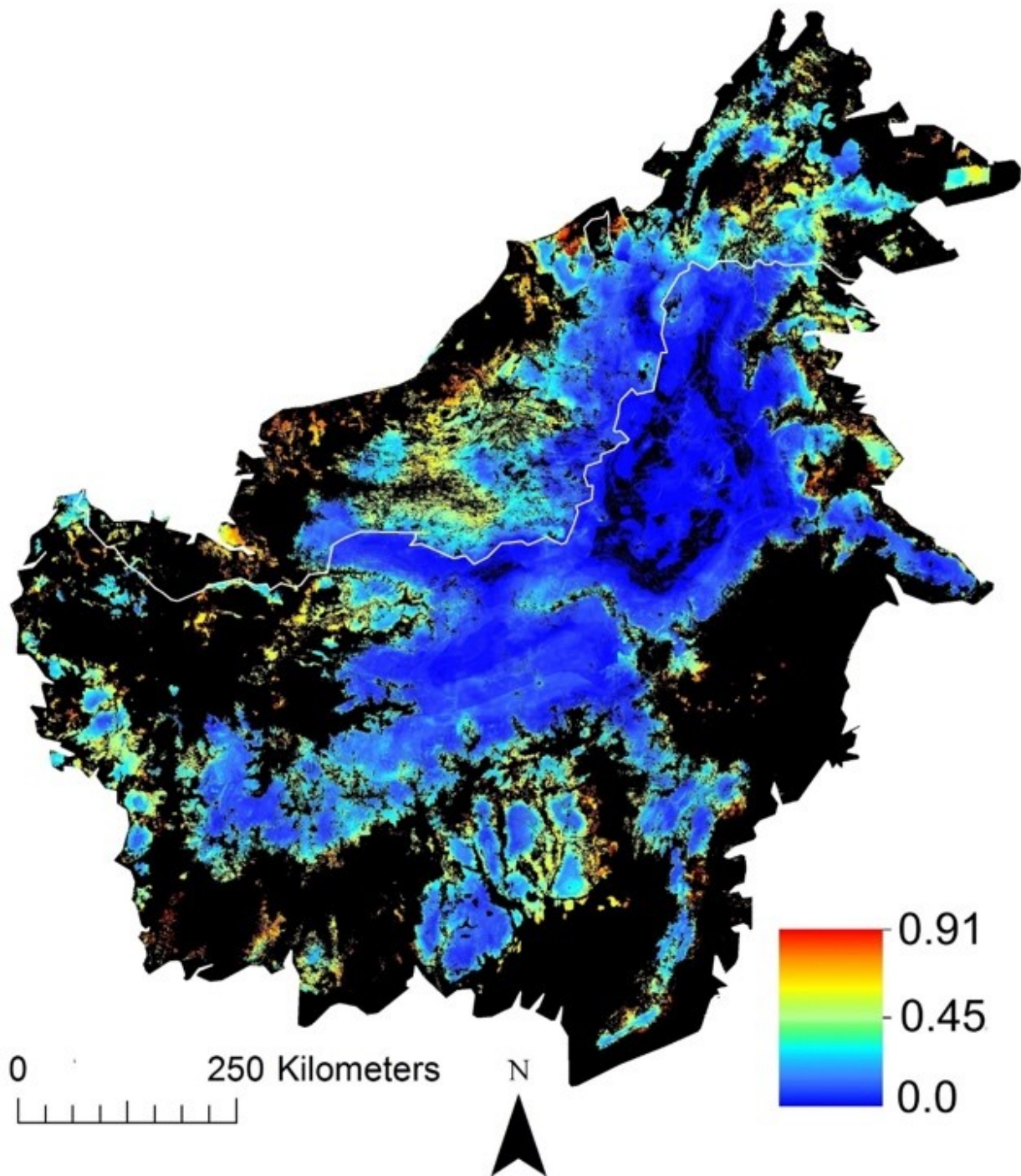
A new study by scientists from the Universities of Oxford, Montana and the US Forest Service highlights novel approaches to tackling [deforestation](#). The team focused their research on Borneo, an island that has lost a staggering 30 percent of its forest since the 1970s and is among the most biodiverse and threatened on the planet.

The loss of Bornean forests threatens species such as the orangutan, Sumatran rhino, and the Sunda clouded leopard; as well as emitting significant amounts of carbon dioxide into the atmosphere.

Although focussed on Borneo, the study findings, published in *Landscape Ecology*, will be useful to all forest conservationists, and could help [tropical forests](#) around the world.

The study took an innovative approach to conducting their data analysis, using existing maps of the area and the machine learning algorithm 'Random Forests', the team built a multi-scale model of deforestation on the island over time (from 2000- 2010).

After calculating the historic links between [landscape](#) variables and deforestation, the team used this information to predict the future deforestation risk facing Borneo's remaining forests. The goal of this study was to provide national authorities with a tool that would support them to recognise potential deforestation threats in the future.



Map from the study showing the predicted risk of deforestation across Borneo's remaining forests. Red areas represent areas of highest risk. Credit: University of Oxford

The deforestation risk factors varied from nation to nation, within the island. In Brunei, deforestation was associated with a highly patchy landscape with multiple land uses within a 10km radius and a large amount of forest edge. By contrast, in the Malaysian provinces of Borneo, deforestation was associated with a high proportion of lowland mosaic landscape types within 20km and high proportions of existing plantations within 30km. This led to a diffuse pattern of risk across Malaysian forests. Finally, in the Indonesian provinces of Borneo, deforestation was associated with areas of low elevation and a highly patchy landscape, leading to strong frontiers of deforestation risk.

Ewan Macdonald, joint first author and a researcher in Oxford's Wildlife Conservation Research Unit (WildCRU) said: 'Our results provide the best insight to date of where the highest risks lie to Borneo's remaining forests. I hope this will help governments and conservation planners to develop effective strategies to combat these risks and to conserve these beautiful forests for future generations.'

'If we understand where risks lurk, we can plan action to counteract them. And these risks are real and imminent for many species, such as the beautiful and enigmatic Sunda clouded leopard, which are threatened by Borneo's forest loss. I hope our understanding of the patterns of deforestation risk will provide a vital tool in developing effective conservation strategies.'

The research findings strongly suggest that this novel approach offer a powerful method for analysing land use change. In addition, it highlights the immense and imminent deforestation risk to Borneo's [forest](#) biodiversity, with clear spatial patterns of [risk](#) related to topography and landscape structure that differ between the three nations that comprise Borneo.

Samuel Cushman, joint first author, Director of the Center for

Landscape Science and Research Landscape Ecologist at the U.S. Forest Service Rocky Mountain Research Station said: 'It is well accepted that ecological processes interact across a range of scales both in time and space; despite this, very few studies have explicitly accounted for scale dependence in predictive modelling. This analysis highlights the power of multi scale approaches to land cover change modelling and we hope it will encourage other researchers to adopt this approach.'

Professor David Macdonald, Director of Oxford's Wildlife Conservation Research Unit said: 'Borneo's majestic forests and glorious wildlife are beacons to the world and what's so exciting about this study is that the intelligence gained from studying patterns in Borneo, sheds a light to illuminate a way of helping tropical forests around the world. The innovation lies in a methodology that can be rolled out far beyond Borneo.'

**More information:** Samuel A. Cushman et al, Multiple-scale prediction of forest loss risk across Borneo, *Landscape Ecology* (2017). [DOI: 10.1007/s10980-017-0520-0](https://doi.org/10.1007/s10980-017-0520-0)

Provided by University of Oxford

Citation: New approach predicts threats to rainforests (2017, May 25) retrieved 6 May 2024 from <https://phys.org/news/2017-05-approach-threats-rainforests.html>

This document is subject to copyright. Apart from any fair dealing for the purpose of private study or research, no part may be reproduced without the written permission. The content is provided for information purposes only.