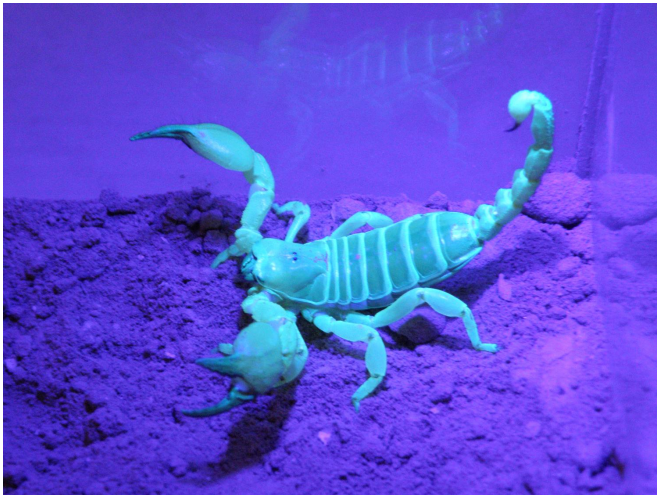


Scorpions have similar tastes in burrow architecture

21 June 2016



A scorpion, *Scorpio palmatus*, under ultraviolet light. Credit: © Stuart Summerfield

Israel Science Foundation, Human Frontier Science Program, Jacob Blaustein Center for Scientific Cooperation, and the Society of Experimental Biology

New research on the burrows of [scorpions](#) in diverse environments finds that these predatory arachnids build strikingly similar architectural features in their homes. The study, published recently in the journal *The Science of Nature*, was conducted using molten aluminum casts and 3D scanning, and suggests that common features of scorpion burrows are part of their "extended physiology" and are vital to the arachnids' survival in some of the world's most inhospitable places.

"This work is about how burrow architecture can extend an animal's physiology by performing functions its body would otherwise have to do on its own, like maintaining a comfortable temperature or improving ventilation," said Berry Pinshow of the Jacob Blaustein Institutes for Desert Research at

Israel's Ben-Gurion University of the Negev, who led the new study.

Many animals, ranging in size from ants to aardvarks, inhabit burrows, including hundreds of scorpion species of at least 10 different families.

"It's amazing how ubiquitous scorpion burrows are in some parts of the world, yet very little has been done to study them until now," said Lorenzo Prendini, a curator in the American Museum of Natural History's Division of Invertebrate Zoology and co-author of the new study.



The researchers dig out a metal cast of a burrow made by a scorpion, *Scorpio palmatus*, in the Negev desert in Israel. Credit: © Amanda Adams

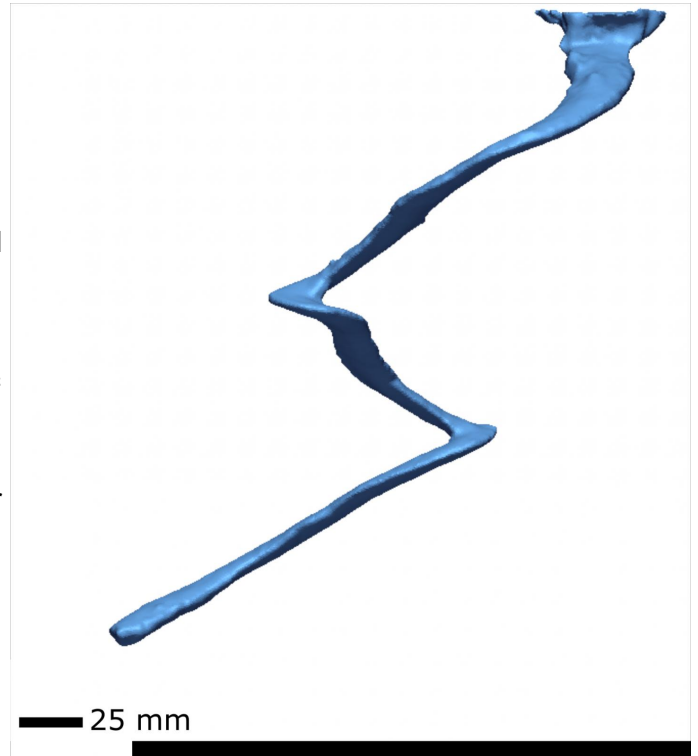
Scorpion burrows can differ drastically, running the gamut in size and design from short runs to complex spiral tunnels up to 9 feet long to multi-entrance communal structures. Some burrows are used for less than 24 hours while others serve as a semi-permanent home in which a scorpion can spend most of its life and more than 90 percent of

its time.

"As ectothermic, or so-called 'cold-blooded,' animals, scorpions rely on energy from the environment to regulate their internal temperature," said Amanda Adams, lead author of the publication in *The Science of Nature* and a former postdoctoral researcher at the Jacob Blaustein Institutes for Desert Research who is currently at Texas A&M University. "Various features of the burrow assist the scorpion in meeting the biological challenges of its environment."

To explore how scorpions use their burrows to their advantage, the researchers examined the burrow architecture of three scorpion species from the same family, Scorpionidae: *Scorpio palmatus*, found in the Negev desert in Israel; *Opisthophthalmus setifrons*, from the central highlands of Namibia; and *Opisthophthalmus wahlbergii*, from the Kalahari desert in Namibia.

After removing the scorpions from their burrows and taking temperature and humidity measurements at various points along each burrow, the researchers poured molten aluminum—heated in the field with a gas-powered kiln to more than 660 degrees Celsius (1,220 degrees Fahrenheit)—down each burrow to create a cast of its intricate structure. Once exhumed, the casts were scanned to create 3D digital models of the burrow that were analyzed with a computer program.



3-D scan of a cast of a burrow dug by a scorpion, *Opisthophthalmus wahlbergii*, from the sand dunes of the Kalahari desert in Namibia. Credit: © Amanda Adams

The scientists found three common burrow features: A horizontal platform near the ground surface that might provide a safe place for the scorpion to "doorkeep"—monitor the presence of potential prey, predators, and mates—and warm up before foraging; at least two spiral or switch-back bends that might deter predators from digging them up, or prevent air flow from the surface, thereby maintaining relatively high humidity and low temperature; and an enlarged terminal chamber at a depth at which temperatures are almost constant, providing a refuge during the heat of the day as well as a place to feed, mate, molt, and give birth.

The research team also found that burrow architecture may change in response to soil composition, hardness, and moisture. For example, the burrows the scientists examined from sandy soil were deeper than those from hard soil.

The researchers point out that although many

questions remain unanswered concerning the burrow environment and natural history of burrowing scorpions in general, the shared features of these three species have been shaped through natural selection for millions of years and may be equally important to other burrowing scorpion species around the world.

More information: Amanda M. Adams et al, Similar burrow architecture of three arid-zone scorpion species implies similar ecological function, *The Science of Nature* (2016). [DOI: 10.1007/s00114-016-1374-z](https://doi.org/10.1007/s00114-016-1374-z)

Provided by American Museum of Natural History

APA citation: Scorpions have similar tastes in burrow architecture (2016, June 21) retrieved 18 September 2019 from <https://phys.org/news/2016-06-scorpions-similar-burrow-architecture.html>

This document is subject to copyright. Apart from any fair dealing for the purpose of private study or research, no part may be reproduced without the written permission. The content is provided for information purposes only.