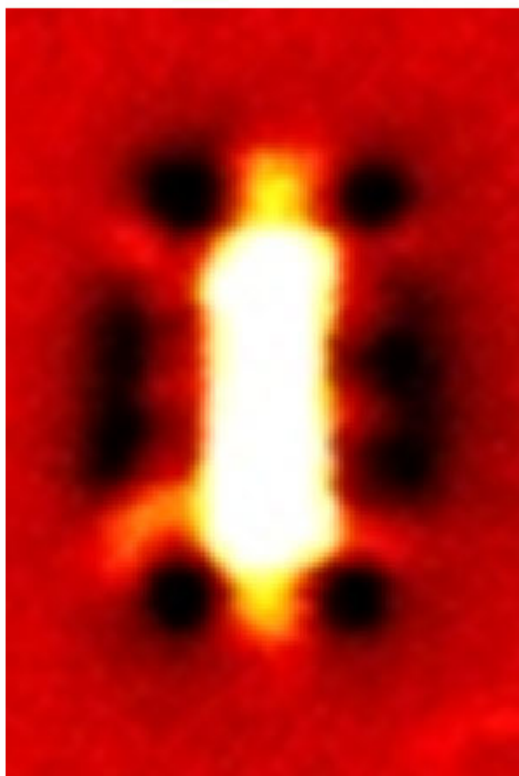


# How infrared light can be captured by graphene nanostructures

22 March 2016



200 nm

Near-field image of a rectangle graphene nanoresonator.  
Credit: CIC nanoGUNE

with ICFO and Graphenea, have demonstrated how infrared light can be captured by nanostructures made of graphene. This happens when light couples to charge oscillations in the graphene. The resulting mixture of light and charge oscillations, called plasmon, can be squeezed into record-small volumes millions of times smaller than in conventional dielectric optical cavities. This process has been visualized by the researchers for the first time with the help of a state-of-the-art, near-field microscope and explained by theory. The researchers identified two types of plasmons—edge and sheet modes—propagating either along the sheet or along the sheet edges. The edge plasmons are unique for their ability to channel electromagnetic energy in one dimension.

The work, reported in *Nature Photonics*, opens new opportunities for ultra-small and efficient photodetectors, sensors and other photonic and optoelectronic nanodevices.

Graphene-based technologies enable extremely small optical nanodevices. The wavelength of [light](#) captured by a graphene sheet, a monolayer sheet of carbon atoms, can be shortened by a factor of 100 compared to light propagating in free space. As a consequence, the light propagating along the graphene sheet, which is called graphene plasmon, requires much less space. For that reason, photonic devices can be made much smaller. The plasmonic field concentration can be further enhanced by fabricating graphene nanostructures acting as nanoresonators for the plasmons. The enhanced field has already found application in enhanced infrared and terahertz photodetection and infrared vibrational sensing of molecules, among other things.

"The development of efficient devices based on plasmonic graphene nanoresonators will critically depend on precise understanding and control of the plasmonic modes inside them," says Dr. Pablo Alonso-Gonzalez, (now at Oviedo University) who

Researchers from CIC nanoGUNE, in collaboration

performed the real-space imaging of the graphene nanoresonators with a near-field microscope.

"We have been strongly impressed by the diversity of plasmonic contrasts observed in the near-field images," says Dr. Alexey Nikitin, Ikerbasque Research Fellow at nanoGUNE, who developed the theory to identify the individual plasmon modes.

Provided by Elhuyar Fundazioa

The research team has disentangled the individual plasmonic modes and separated them into two different classes. The first class of plasmons—"sheet plasmons"—can exist "inside" graphene nanostructures, extending over the whole area of graphene. Conversely, the second class of plasmons—"edge plasmons"—can exclusively propagate along the edges of graphene nanostructures, leading to whispering gallery modes in disk-shaped nanoresonators or Fabry-Perot resonances in graphene nanorectangles due to reflection at their corners. The edge plasmons are much better confined than the sheet plasmons and, most importantly, transfer the energy in a single dimension.

The real-space images reveal dipolar edge modes with a mode volume that is 100 million times smaller than a cube of the free-space wavelength. The researchers also measured the dispersion (energy as a function of momentum) of the edge plasmons based on their near-field images, highlighting the shortened wavelength of edge plasmons compared to [sheet](#) plasmons. Thanks to their unique properties, edge plasmons could be a promising platform for coupling quantum dots or single molecules in future quantum opto-electronic devices.

"Our results also provide novel insights into the physics of near-field microscopy of graphene plasmons, which could be very useful for interpreting near-field images of other light-matter interactions in two-dimensional materials," says Ikerbasque Research Professor Rainer Hillenbrand who led the project.

**More information:** Real-space mapping of tailored sheet and edge plasmons in graphene nanoresonators *Nature Photonics* (2016), [DOI: 10.1038/nphoton.2016.44](https://doi.org/10.1038/nphoton.2016.44)

APA citation: How infrared light can be captured by graphene nanostructures (2016, March 22) retrieved 15 June 2021 from <https://phys.org/news/2016-03-infrared-captured-graphene-nanostructures.html>

*This document is subject to copyright. Apart from any fair dealing for the purpose of private study or research, no part may be reproduced without the written permission. The content is provided for information purposes only.*