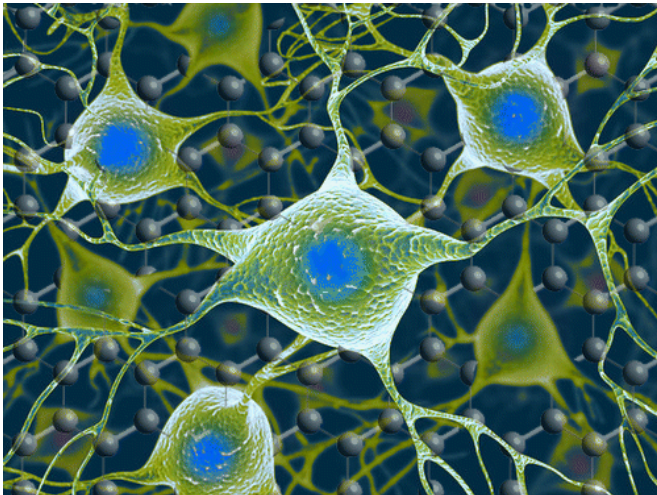


Graphene shown to safely interact with neurons in the brain

29 January 2016



Researchers have successfully demonstrated how it is possible to interface graphene - a two-dimensional form of carbon - with neurons, or nerve cells, while maintaining the integrity of these vital cells. The work may be used to build graphene-based electrodes that can safely be implanted in the brain, offering promise for the restoration of sensory functions for amputee or paralysed patients, or for individuals with motor disorders such as epilepsy or Parkinson's disease.

The research, published in the journal *ACS Nano*, was an interdisciplinary collaboration coordinated by the University of Trieste in Italy and the Cambridge Graphene Centre.

Previously, other groups had shown that it is possible to use treated graphene to interact with [neurons](#). However the signal to noise ratio from this interface was very low. By developing methods of working with untreated graphene, the researchers retained the material's electrical conductivity, making it a significantly better

electrode.

"For the first time we interfaced graphene to neurons directly," said Professor Laura Ballerini of the University of Trieste in Italy. "We then tested the ability of neurons to generate electrical signals known to represent brain activities, and found that the neurons retained their neuronal signalling properties unaltered. This is the first functional study of neuronal synaptic activity using uncoated graphene based materials."

Our understanding of the brain has increased to such a degree that by interfacing directly between the brain and the outside world we can now harness and control some of its functions. For instance, by measuring the brain's [electrical impulses](#), [sensory functions](#) can be recovered. This can be used to control robotic arms for amputee patients or any number of basic processes for paralysed patients - from speech to movement of objects in the world around them. Alternatively, by interfering with these electrical impulses, motor disorders (such as epilepsy or Parkinson's) can start to be controlled.

Scientists have made this possible by developing electrodes that can be placed deep within the brain. These electrodes connect directly to neurons and transmit their electrical signals away from the body, allowing their meaning to be decoded.

However, the interface between neurons and electrodes has often been problematic: not only do the electrodes need to be highly sensitive to electrical impulses, but they need to be stable in the body without altering the tissue they measure.

Too often the modern electrodes used for this interface (based on tungsten or silicon) suffer from partial or complete loss of signal over time. This is often caused by the formation of scar tissue from the electrode insertion, which prevents the electrode from moving with the natural movements

of the brain due to its rigid nature.

Graphene has been shown to be a promising material to solve these problems, because of its excellent conductivity, flexibility, biocompatibility and stability within the body.

Based on experiments conducted in rat brain cell cultures, the researchers found that untreated graphene electrodes interfaced well with neurons. By studying the neurons with electron microscopy and immunofluorescence the researchers found that they remained healthy, transmitting normal electric impulses and, importantly, none of the adverse reactions which lead to the damaging scar tissue were seen.

According to the researchers, this is the first step towards using pristine graphene-based materials as an electrode for a neuro-interface. In future, the researchers will investigate how different forms of graphene, from multiple layers to monolayers, are able to affect neurons, and whether tuning the material properties of graphene might alter the synapses and neuronal excitability in new and unique ways. "Hopefully this will pave the way for better deep brain implants to both harness and control the [brain](#), with higher sensitivity and fewer unwanted side effects," said Ballerini.

"We are currently involved in frontline research in graphene technology towards biomedical applications," said Professor Maurizio Prato from the University of Trieste. "In this scenario, the development and translation in neurology of graphene-based high-performance biodevices requires the exploration of the interactions between graphene nano- and micro-sheets with the sophisticated signalling machinery of [nerve cells](#). Our work is only a first step in that direction."

"These initial results show how we are just scratching the tip of an iceberg when it comes to the potential of graphene and related materials in bio-applications and medicine," said Professor Andrea Ferrari, Director of the Cambridge Graphene Centre. "The expertise developed at the Cambridge Graphene Centre allows us to produce large quantities of pristine material in solution, and this study proves the compatibility of our process

with neuro-interfaces."

More information: Alessandra Fabbro et al. Graphene-Based Interfaces Do Not Alter Target Nerve Cells, *ACS Nano* (2016). [DOI: 10.1021/acsnano.5b05647](https://doi.org/10.1021/acsnano.5b05647)

Provided by University of Cambridge

APA citation: Graphene shown to safely interact with neurons in the brain (2016, January 29) retrieved 20 May 2019 from <https://phys.org/news/2016-01-graphene-shown-safely-interact-neurons.html>

This document is subject to copyright. Apart from any fair dealing for the purpose of private study or research, no part may be reproduced without the written permission. The content is provided for information purposes only.