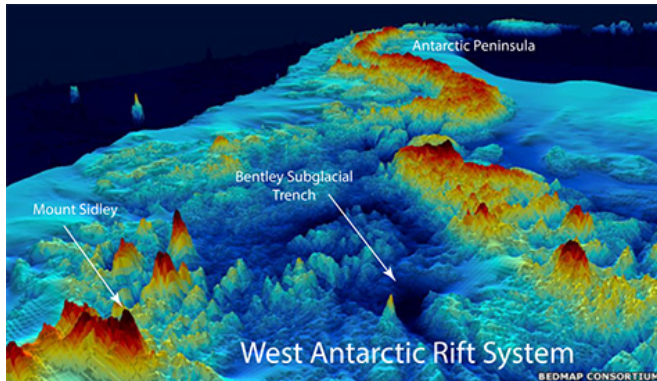


The geography of Antarctica's underside

8 December 2015, by Diana Lutz



The topography of West Antarctica below the ice sheet as viewed from above, looking toward the Antarctic Peninsula. Much of West Antarctica is a basin that lies below sea level (blue), although it is currently filled with ice, not water. West Antarctica was stretched and thinned as it moved away from East Antarctica, forming one of the world's largest continental rift systems. Credit: Bedrock Consortium

Planetary scientists would be thrilled if they could peel the Earth like an orange and look at what lies beneath the thin crust. We live on the planet's cold surface, but the Earth is a solid body and the surface is continually deformed, split, wrinkled and ruptured by the roiling of warmer layers beneath it.

The [contrast](#) between the surface and the depth is nowhere starker—or more important—than in Antarctica. What is causing the mysterious line of volcanoes that emerge from the ice sheet there, and what does it mean for the future of the ice?

"Our understanding of what's going on is really hampered because we can't see the geology," said Andrew Lloyd, a graduate student in [earth](#) and planetary sciences in Arts & Sciences at Washington University in St. Louis. "We have to turn to geophysical methods, such as seismology, to learn more," he said.

Lloyd helped deploy research seismometers

across the West Antarctic Rift System and Marie Byrd Land in the austral summer of 2009-10. He then returned in late 2011 and snowmobiled more than 1,000 miles, living in a Scott tent, to recover the precious data.

The recordings the instruments made of the reverberations of distant earthquakes from January 2010 to January 2012 were used to create maps of seismic velocities beneath the rift valley. An analysis of the maps was published online in the *Journal of Geophysical Research: Solid Earth* on Nov. 12, 2015.

This is the first time seismologists have been able to deploy instruments rugged enough to survive a winter in this part of the frozen continent, and so this is the first detailed look at the Earth beneath this region.

Not surprisingly, the maps show a giant blob of superheated rock about 60 miles beneath Mount Sidley, the last of a chain of volcanic mountains in Marie Byrd Land at one end of the transect. More surprisingly, they reveal hot rock beneath the Bentley Subglacial Trench, a deep basin at the other end of the transect.

The Bentley Subglacial Trench is part of the West Antarctic Rift System and hot rock beneath the region indicates that this part of the rift system was active quite recently.

A volcanic mystery

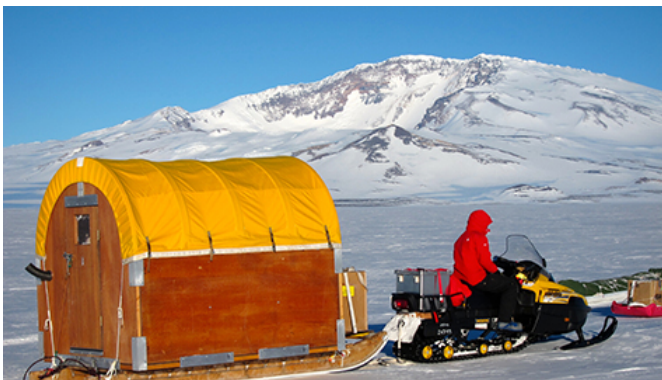
Mount Sidley, the highest [volcano](#) in Antarctica, sits directly above a hot region in the mantle, Lloyd said. Mount Sidley is the southernmost mountain in a volcanic mountain range in Marie Byrd Land, a mountainous region dotted with volcanoes near the coast of West Antarctica.

"A line of volcanoes hints there might be a hidden mantle plume, like a blowtorch, beneath the plate," said Doug Wiens, PhD, professor of earth and planetary sciences and a co-author on the paper.

"The volcanoes would pop up in a row as the plate moved over it."

"But it's a bit unclear if this is happening here," he said. We think we know which direction the plate is moving, but the volcanic chain is going in a different direction and two additional nearby volcanic chains are oriented in yet other directions.

"If this was just a plate moving over a couple of mantle plumes, you'd expect them to line up, as they do in the Hawaiian Islands," he said.



Lloyd on his Skidoo towing a Conestoga (the cook shack for the traverse team) in front of Mount Sidley, a volcano that blew out its side much as Mount St. Helens did. Credit: Mike Roberts

Although the hot zone's shape is ill-defined, it is clear there is higher heat flow into the base of the ice sheet in this area, Wiens said.

Deeper than the Grand Canyon

The most interesting finding, Lloyd said, is the discovery of a hot zone beneath the Bentley Subglacial Trench.

The basin is part of the West Antarctic Rift System, a series of rifts, adjacent to the Transantarctic Mountains, along which the continent was stretched and thinned.

The old rock of East Antarctica rises well above sea level, but west of the Transantarctic Mountains,

extension has pulled the [crust](#) into a broad saddle, or rift valley, much of which lies a kilometer below sea level.

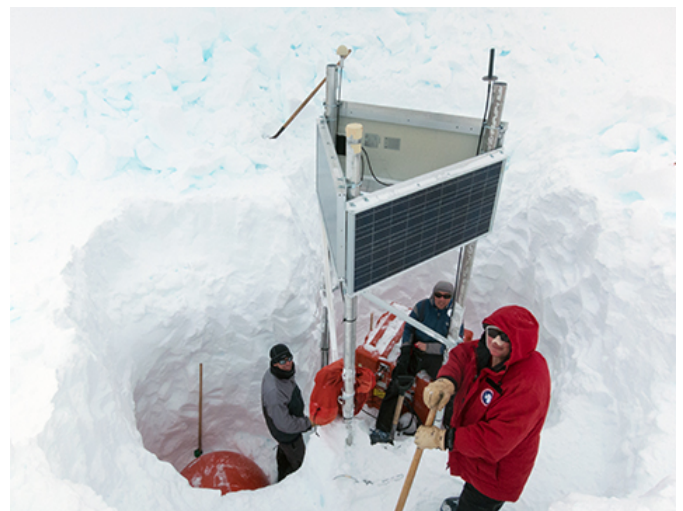
"If you removed the ice, West Antarctica would rebound, and most of it would be near sea level. But the narrower and deeper basins might remain below it," Lloyd said. "The Bentley Subglacial Trench, which is the lowest point on Earth not covered by an ocean, would still be a kilometer and a half below sea level if the ice were removed."

Because the West Antarctic Rift is hidden, less is known about it than about other famous rift systems such as the East African Rift or, in the United States, the Rio Grande Rift.

"We didn't know what we'd find beneath the basin," Wiens said. "For all we knew it would be old and cold.

"We didn't detect any earthquakes, so we don't think the rift is currently active, but the heat suggests rifting stopped quite recently."

In this way, it resembles the Rio Grande Rift, which is also no longer active but has yet to cool completely.



A team maintains a seismic station on Thwaites Glacier, an area of heavy snowfall. The seismometer is in the orange dome in the lowest part of the three-step snow pit. Credit: Mike Roberts

A period of diffuse extension created the rift valley in the late Cretaceous, roughly 100 million years ago, Lloyd said, and more focused extension then created deep basins like the Bentley Subglacial Basin and the Terror Rift in the Ross Sea.

"This period of more focused extension likely occurred in the Neogene," Lloyd said. "If it's still hot there, it might also be hot under other basins in the rift system."

Will the heat flow grease the skids?

The [rift system](#) is thought to have a major influence on ice streams in West Antarctica. "Rifting and ice flow occur on completely different time scales," Lloyd said, "so rifting is not going to suddenly make the ice sheet unstable.

"But to accurately model how quickly the ice is going to flow or the rock to rebound, we need to understand the 'boundary conditions' for ice models, such as heat flow from the mantle," he said.

"Seismic surveys like this one will help inform models of the ice sheet," Wiens said. "Modelers need an estimate of the heat flow, and they need to know something about the geological conditions at the bottom of the ice sheet in order to estimate drag. Right now, both of these factors are very poorly constrained."

While heat flow through the Earth's crust has been measured at at least 34,000 different spots around the globe, in Antarctica it has been measured in less than a dozen places. In July 2015, scientists reported the [heat flow](#) at one of these spots was four times higher than the global average.

Ever since then, scientists have been wondering why the reading was so high. "Recent extension in the Bentley Subglacial Trench might explain these readings," Wiens said.

The next big problem, he said, is to understand the structure under the Thwaites and Pine Island glaciers, which lie closer to the coastline than the

Bentley Subglacial Trench. These two glaciers have been described as the 'weak underbelly' of the ice sheet because surges in the ice flow there could theoretically cause the rapid disintegration of the entire West Antarctic [ice sheet](#).

During the 2014-2015 Antarctic field season, Lloyd helped deploy another 10 seismic stations that together with seismometers deployed by the British will map the underside of this key area.

More information: *Journal of Geophysical Research: Solid Earth*, [DOI: 10.1002/2015JB012455](#)

Provided by Washington University in St. Louis

APA citation: The geography of Antarctica's underside (2015, December 8) retrieved 18 January 2021 from <https://phys.org/news/2015-12-geography-antarctica-underside.html>

This document is subject to copyright. Apart from any fair dealing for the purpose of private study or research, no part may be reproduced without the written permission. The content is provided for information purposes only.