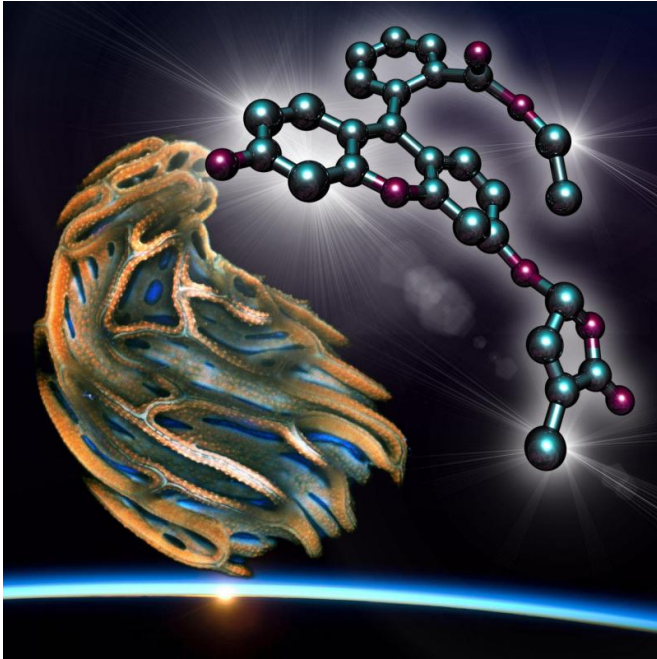


Researchers begin unraveling the signaling mechanism of a devastating crop parasite

7 September 2015, by Christopher Packham



The seed of striga and fluorescence turn-on probe for analyzing the germination of striga. Credit: Shinya Hagihara, ITbM, Nagoya University

(Phys.org)—In sub-Saharan Africa, few agricultural parasites are as devastating to a wide variety of crops as *Striga hermonthica*, commonly known as witchweed. It chokes out such staple crops as sorghum, millet and rice, which show symptoms similar to those of drought or soil nutrient deficiency.

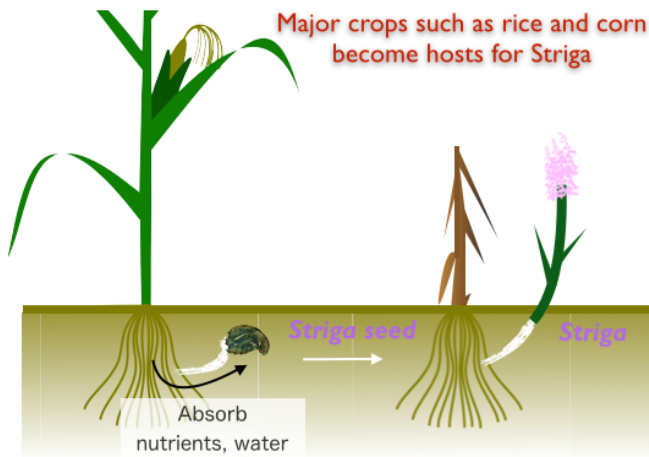
One of the reasons *Striga* is so hard to control is that its symptoms do not become apparent until the parasite actually emerges from the plants, by which point it is too late to save the crop. Thus, it constitutes a major threat to African food security, and has led to the loss of an estimated U.S. \$10 billion in production every single year. Establishing the regulatory dynamics of the parasite are thus of singular importance to researchers hoping to

control or eradicate it.

Though the mechanisms of *Striga* propagation are still unclear, [plant hormones](#) called strigolactones, which are produced by the host plants, are known to stimulate the germination of striga. About 17 known strigolactones have been isolated, all unique to different plant species, and the striga parasite recognizes its [host plants](#) by sensing the composition of their strigolactones. In plants, strigolactones function as both plant hormones and as signals for communicating with microbes. Researchers have previously identified a group of proteins in crop plants as presumptive receptors for strigolactones, but the receptor in the *Striga* parasite remains unidentified.

Reporting in the journal *Science*, an international group of researchers has developed a fluorescence probe called Yoshimulactone Green (YLG), which activates strigolactone signaling and illuminates the signal perception activity of strigolactone receptors. The researchers hoped that it would elucidate the mechanisms of striga germination and eventually point toward a means of controlling infection and propagation.

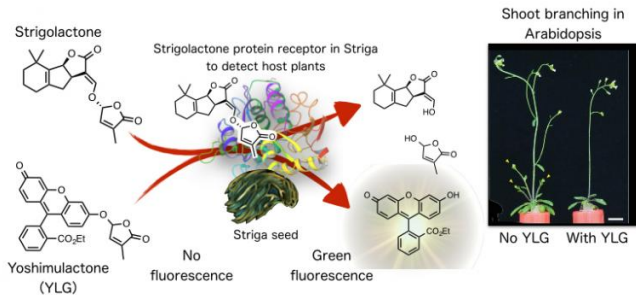
The current study reports the development of the small-molecule probe designed to illuminate the function of strigolactone receptors. The researchers looked at the hydrolyzing action of a known receptor called AtD14 and applied it to the development of YLG, a fluorogenic agonist for receptors of similar type. YLG was designed to be recognized by strigolactone receptors, and the resulting hydrolyzing reaction leads to the generation of fluorescent products. Thus, the probe provides visual markers for strigolactone receptivity.



Striga infests crops by absorbing nutrients and water from their roots. Credit: ITbM, Nagoya University

The authors report that in vivo, YLG successfully stimulates *Striga* germination, and 97 percent of the germinating seeds emitted fluorescence. "Thus, YLG functions as a fluorescent agonist in *Striga*, which cleaves the ligand as it is perceived," they write. They subsequently searched a public database of *Striga* RNA sequences and identified 12 genes as candidate receptors related to the ArD14 receptor upon which they based the YLG probe.

By evaluating the relevance of hydrolysis in *Striga* evolution, they determined that 10 genes in the YLG-illuminated hydrolysis trait coincided with *Striga* characteristics, implicating them in seed germination. Of this subgroup, two showed "indiscriminately high affinity to all of the strigolactones tested." The authors write, "Thus, from a few promiscuous receptors, multiple specialized receptors seem to have evolved to detect structurally diverse strigolactones more efficiently. This would have led to each different strigolactone being perceived by a different combination of [receptors](#)."



Striga seeds are treated with Yoshimulactone, which show similar bioactivity to strigolactone. Credit: ITbM, Nagoya University

More information: "Probing strigolactone receptors in *Striga hermonthica* with fluorescence." *Science* 21 August 2015: Vol. 349 no. 6250 pp. 864-868 [DOI: 10.1126/science.aab3831](https://doi.org/10.1126/science.aab3831)

ABSTRACT

Elucidating the signaling mechanism of strigolactones has been the key to controlling the devastating problem caused by the parasitic plant *Striga hermonthica*. To overcome the genetic intractability that has previously interfered with identification of the strigolactone receptor, we developed a fluorescence turn-on probe, Yoshimulactone Green (YLG), which activates strigolactone signaling and illuminates signal perception by the strigolactone receptors. Here we describe how strigolactones bind to and act via ShHTLs, the diverged family of ?? hydrolase-fold proteins in *Striga*. Live imaging using YLGs revealed that a dynamic wavelike propagation of strigolactone perception wakes up *Striga* seeds. We conclude that ShHTLs function as the strigolactone receptors mediating seed germination in *Striga*. Our findings enable access to strigolactone receptors and observation of the regulatory dynamics for strigolactone signal transduction in *Striga*.

© 2015 Phys.org

APA citation: Researchers begin unraveling the signaling mechanism of a devastating crop parasite (2015, September 7) retrieved 18 September 2019 from <https://phys.org/news/2015-09-unraveling-mechanism-devastating-crop-parasite.html>

This document is subject to copyright. Apart from any fair dealing for the purpose of private study or research, no part may be reproduced without the written permission. The content is provided for information purposes only.