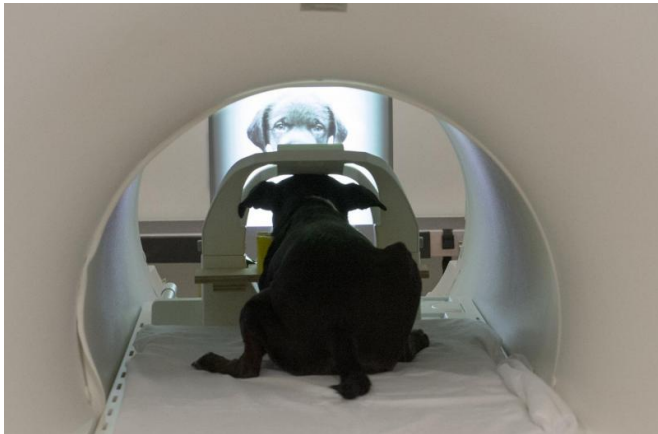


Dogs process faces in specialized brain area, study reveals

4 August 2015



The study involved dogs viewing both static images and video images on a screen while undergoing fMRI. It was a particularly challenging experiment since dogs do not normally interact with two-dimensional images, and they had to undergo training to learn to pay attention to the screen. Credit: Gregory Berns, Emory University

Dogs have a specialized region in their brains for processing faces, a new study finds. *PeerJ* is publishing the research, which provides the first evidence for a face-selective region in the temporal cortex of dogs.

"Our findings show that [dogs](#) have an innate way to process [faces](#) in their brains, a quality that has previously only been well-documented in humans and other primates," says Gregory Berns, a neuroscientist at Emory University and the senior author of the study.

Having neural machinery dedicated to face processing suggests that this ability is hard-wired through cognitive evolution, Berns says, and may help explain dogs' extreme sensitivity to human social cues.

Berns heads up the Dog Project in Emory's

Department of Psychology, which is researching evolutionary questions surrounding man's best, and oldest, friend. The project was the first to train dogs to voluntarily enter a functional magnetic resonance imaging (fMRI) scanner and remain motionless during scanning, without restraint or sedation.

In previous research, the Dog Project identified the caudate region of the canine brain as a reward center. It also showed how that region of a dog's brain responds more strongly to the scents of familiar humans than to the scents of other humans, or even to those of familiar dogs.

For the current study, the researchers focused on how dogs respond to faces versus everyday objects. "Dogs are obviously highly social animals," Berns says, "so it makes sense that they would respond to faces. We wanted to know whether that response is learned or innate."

The study involved dogs viewing both static images and video images on a screen while undergoing fMRI. It was a particularly challenging experiment since dogs do not normally interact with two-dimensional images, and they had to undergo training to learn to pay attention to the screen.

A limitation of the study was the small sample size: Only six of the eight dogs enrolled in the study were able to hold a gaze for at least 30 seconds on each of the images to meet the experimental criteria.

The results were clear, however, for the six subjects able to complete the experiment. A region in their temporal lobe responded significantly more to movies of human faces than to movies of everyday objects. This same region responded similarly to still images of human faces and dog faces, yet significantly more to both human and dog faces than to images of everyday objects.

If the dogs' response to faces was learned - by associating a human face with food, for example -

you would expect to see a response in the reward system of their brains, but that was not the case, Berns says.

A previous study, decades ago, using electrophysiology, found several face-selective neurons in sheep.

"That study identified only a few face-selective cells and not an entire region of the cortex," says Daniel Dilks, an Emory assistant professor of psychology and the first author of the current dog study.

The researchers have dubbed the canine face-processing region they identified the dog face area, or DFA.

Humans have at least three face processing regions in the brain, including the fusiform face area, or FFA, which is associated with distinguishing faces from other objects. "We can predict what parts of your brain are going to be activated when you're looking at faces," Dilks says. "This is incredibly reliable across people."

One hypothesis is that distinguishing faces is important for any social creature.

"Dogs have been cohabitating with humans for longer than any other animal," Dilks says. "They are incredibly social, not just with other members of their pack, but across species. Understanding more about canine cognition and perception may tell us more about social cognition and perception in general."

Provided by Emory University

APA citation: Dogs process faces in specialized brain area, study reveals (2015, August 4) retrieved 24 November 2020 from <https://phys.org/news/2015-08-dogs-specialized-brain-area-reveals.html>

This document is subject to copyright. Apart from any fair dealing for the purpose of private study or research, no part may be reproduced without the written permission. The content is provided for information purposes only.