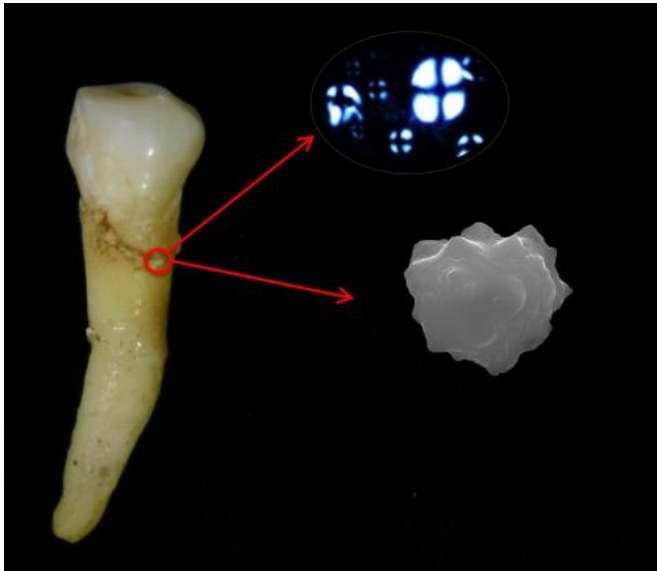


# Dental plaque reveals key plant in prehistoric Easter Island diet

15 December 2014



Dental calculus (hardened plaque) from ancient teeth is helping resolve the question of what plant foods Easter Islanders relied on before European contact. Credit: Monica Tromp

A University of Otago, New Zealand, PhD student analysing dental calculus (hardened plaque) from ancient teeth is helping resolve the question of what plant foods Easter Islanders relied on before European contact.

Known to its Polynesian inhabitants as Rapa Nui, Easter Island is thought to have been colonized around the 13th Century and is famed for its mysterious large stone statues or moai.

Otago Anatomy PhD student Monica Tromp and Idaho State University's Dr John Dudgeon have just published new research clearing up their previous puzzling finding that suggested palm may have been a staple plant food for Rapa Nui's population over several centuries.

However, no other line of archaeological or ethnohistoric evidence supports palm having a dietary role on Easter Island; in fact evidence points to the palm becoming extinct soon after colonization.

Nevertheless, the researchers had found that the vast majority of phytoliths (plant microfossils) embedded within the calculus were from palm trees.

The teeth were from burials excavated in the early 1980s from multiple coastal archaeological sites around the island.

To clear up the mystery, the pair undertook further analysis, newly published in the *Journal of Archaeological Science*. This included identifying [starch grains](#) in the dental calculus removed from 30 teeth.

After removing and decalcifying the plaque from each tooth, Ms Tromp and Dr Dudgeon identified starch grains that were consistent with modern sweet potato. None of the recovered grains showed any similarities to banana, taro or yam, other starchy plants that are hypothesised to be part of the diet.

The researchers went on to test modern sweet potato skins grown in sediment similar to that of Rapa Nui's and found that as tubers grow, their skins seem to incorporate palm phytoliths from the soil.

"So this actually bolsters the case for [sweet potato](#) as a staple and important plant food source for the Islanders from the time the island was first colonised," Ms Tromp says.

She and Dr Dudgeon are the first biological anthropologists to study dental calculus in the Pacific.

"It is an excellent target for looking at the plant component of ancient diets as microfossils become embedded in dental calculus throughout a person's life. You can get a good idea of some of the plant foods people were eating, which is not an easy task.

This research also shows that the plant foods you find evidence for in dental calculus can come from the environment that foods are grown in and not necessarily from the food itself - this finding has the potential to impact [dental calculus](#) studies worldwide. "

Determining [plants'](#) role in ancient Oceanic diets is extremely difficult due to the scarcity of plant remains, but this research of microscopic plant remains is providing one more piece of the dietary puzzle.

Provided by University of Otago

APA citation: Dental plaque reveals key plant in prehistoric Easter Island diet (2014, December 15) retrieved 3 December 2021 from <https://phys.org/news/2014-12-dental-plaque-reveals-key-prehistoric.html>

*This document is subject to copyright. Apart from any fair dealing for the purpose of private study or research, no part may be reproduced without the written permission. The content is provided for information purposes only.*