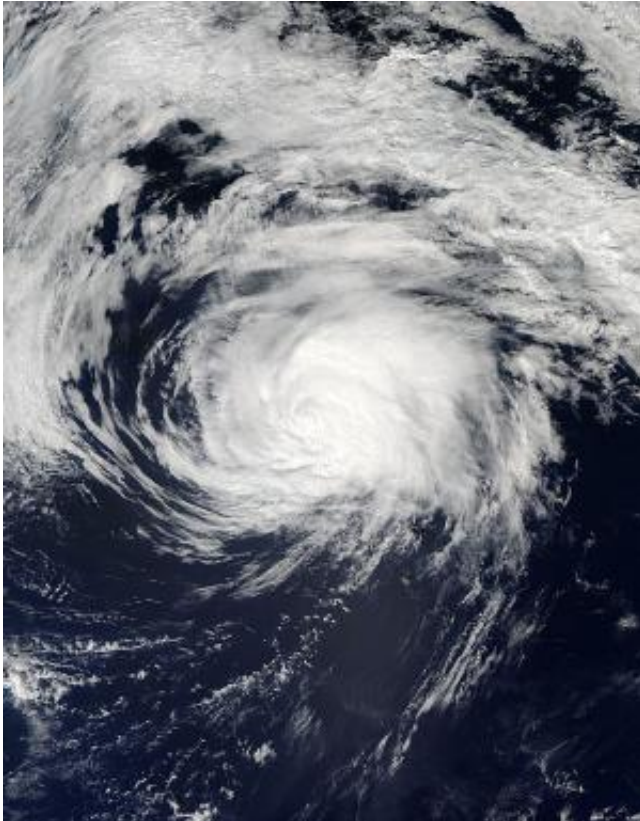


NASA catches a weaker Edouard, headed toward Azores

19 September 2014, by Rob Gutro



At 5 a.m. EDT on Sept. 19, Edouard's maximum sustained winds had decreased to near 60 mph (95 kph). The storm's center was located near latitude 39.8 north and longitude 38.5 west. That's about 530 miles (855 km) west-northwest of Faval Island in the Western Azores.

Portugal's Azores Islands include nine [volcanic islands](#) in the North Atlantic Ocean. They are about 850 miles (1,360 km) west of continental Portugal.

Edouard is expected to become a post-tropical cyclone later on Sept. 19. Then it is forecast to head east and affect the western Azores Islands over the weekend of Sept. 20 and 21 before turning south and weakening to a depression.

Provided by NASA's Goddard Space Flight Center

NASA's Aqua satellite flew over Tropical Storm Edouard on Sept. 18 at 1:45 p.m. EDT that showed the eye had disappeared and the bulk of clouds pushed east of center. Credit: NASA Goddard MODIS Rapid Response Team

NASA's Aqua satellite passed over the Atlantic Ocean and captured a picture of Tropical Storm Edouard as it continues to weaken. The National Hurricane Center expects Edouard to affect the western Azores over the next two days.

NASA's Aqua satellite flew over Tropical Storm Edouard on Sept. 18 at 1:45 p.m. EDT and the Moderate Resolution Imaging Spectroradiometer (MODIS) instrument took a visible picture that showed the eye had disappeared and the bulk of clouds pushed east of center.

APA citation: NASA catches a weaker Edouard, headed toward Azores (2014, September 19) retrieved 17 September 2019 from <https://phys.org/news/2014-09-nasa-weaker-edouard-azores.html>

This document is subject to copyright. Apart from any fair dealing for the purpose of private study or research, no part may be reproduced without the written permission. The content is provided for information purposes only.