

# New Parafaveoloolithid dino egg found from the Pingxiang Basin, Jiangxi Province of China

5 June 2013



Fig. 1 Holotype of *Parafaveoloolithus pingxiangensis* oosp. nov. Credit: ZOU Songlin

Dinosaur egg clutches, single eggs, and countless eggshell fragments have been found in the the Upper Cretaceous of the Pingxiang Basin, Jiangxi Province of China since 2002. In an article published in the latest issue of *Vertebrata PalAsiatica* 51(2), Dr. WANG Xiaolin, Institute of Vertebrate Paleontology and Paleoanthropology (IVPP), Chinese Academy of Sciences, and his team described a new oospecies: *Parafaveoloolithus pingxiangensis* oosp. nov. This study helps better understanding the composition of the Pingxiang dinosaur eggs oofauna and provides new data to study the eggshell formation and evolution of the dinosaur eggs in the Cretaceous Period.

*Parafaveoloolithus pingxiangensis* is oblate in shape, and its outer surface is smooth. Its eggshell is usually composed of three or five superimposed slender shell units. In some portions, 6-10 shell units are assembled in the middle and upper part of the eggshell. Pores are straight and unbranching, extremely numerous, and closely spaced, looking as a whole like a honeycomb in tangential section through the middle part of the eggshell.

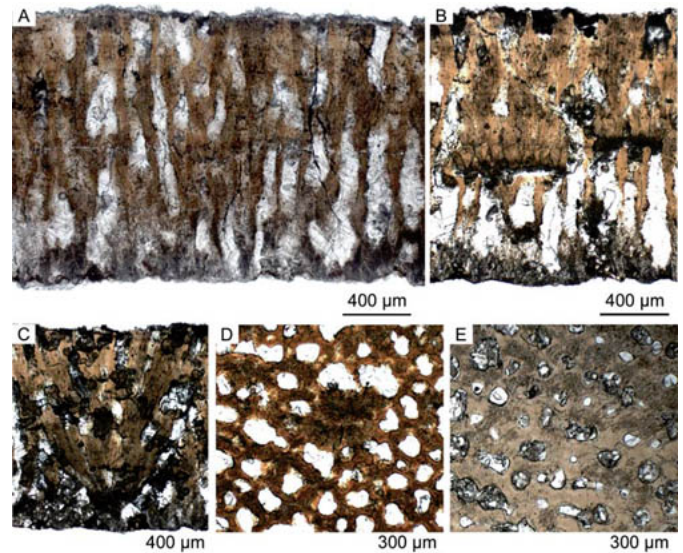


Fig. 2 Eggshell microstructure of *Parafaveoloolithus pingxiangensis* oosp. nov. Credit: ZOU Songlin

"Compared to the members of faveoloolithids, the new specimens should be assigned to the oogenus *Parafaveoloolithus* on the basis of some shell units tending to assemble in the middle and upper part of the eggshell", said study coauthor Dr. WANG Qiang of the IVPP, "However, the difference is remarkable between the new specimen and the known oospecies, *Parafaveoloolithus microporus*, *P. macroporus*, *P. tiansicunensis* and *P. guoqingsiensis*, of which the eggshell usually has two or three shell units tending to assemble in the middle part of the eggshell. Therefore, the specimens described here represent a new oospecies".

#### More information:

[www.ivpp.cas.cn/cbw/gjzdwxb/xb...0507384709566030.pdf](http://www.ivpp.cas.cn/cbw/gjzdwxb/xb...0507384709566030.pdf)

Provided by Institute of Vertebrate Paleontology  
and Paleoanthropology

APA citation: New Parafaveoolithid dino egg found from the Pingxiang Basin, Jiangxi Province of China  
(2013, June 5) retrieved 16 October 2021 from <https://phys.org/news/2013-06-parafaveoolithid-dino-egg-pingxiang-basin.html>

*This document is subject to copyright. Apart from any fair dealing for the purpose of private study or research, no part may be reproduced without the written permission. The content is provided for information purposes only.*