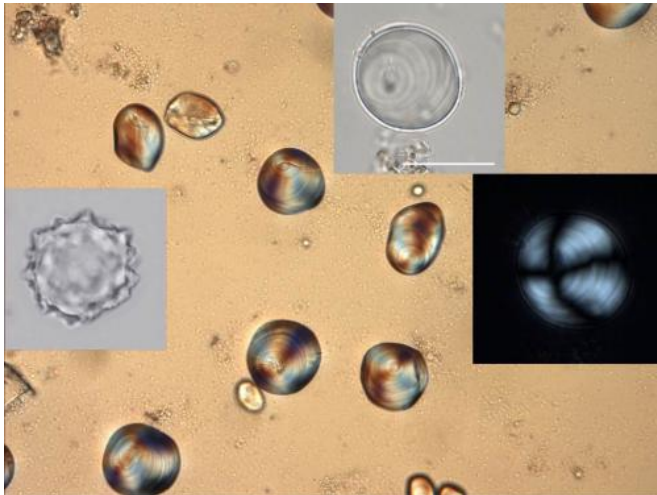


In ancient China, sago palms were major plant food prior to rice cultivation

8 May 2013



likely relied on bananas, acorns and freshwater roots and tubers as important plant foods prior to the cultivation of rice.

More information: Yang X, Barton HJ, Wan Z, Li Q, Ma Z, et al. (2013) Sago-type Palms Were an Important Plant Food Prior to Rice in Southern Subtropical China. *PLoS ONE* 8(5): e63148. [doi:10.1371/journal.pone.0063148](https://doi.org/10.1371/journal.pone.0063148)

Provided by Public Library of Science

This image shows modern starch grains from sago palms and ancient phytolith and starch grains recovered from Neolithic tools. Credit: Xiaoyan Yang

Before rice cultivation became prevalent, ancient populations on the southern coast of China likely relied on sago palms as staple plant foods, according to research published May 8 in the open access journal *PLOS ONE* by Xiaoyan Yang and colleagues from the Chinese Academy of Sciences in Beijing, China.

Little is known about prehistoric diets of those who lived in southern subtropical China, as the [acidic soils](#) and humid climate of the region cause poor preservation of plant remains. Though literature and archaeological discoveries have suggested that roots and tubers were the staple foods in this region, no direct evidence has so far been found.

In this study, researchers analyzed starch granules recovered from Neolithic stone tools used approximately 3,350-2,470 BC, and found these to resemble starches typically found in sago-type palms. They found that people at this time also

APA citation: In ancient China, sago palms were major plant food prior to rice cultivation (2013, May 8) retrieved 21 January 2021 from <https://phys.org/news/2013-05-ancient-china-sago-palms-major.html>

This document is subject to copyright. Apart from any fair dealing for the purpose of private study or research, no part may be reproduced without the written permission. The content is provided for information purposes only.