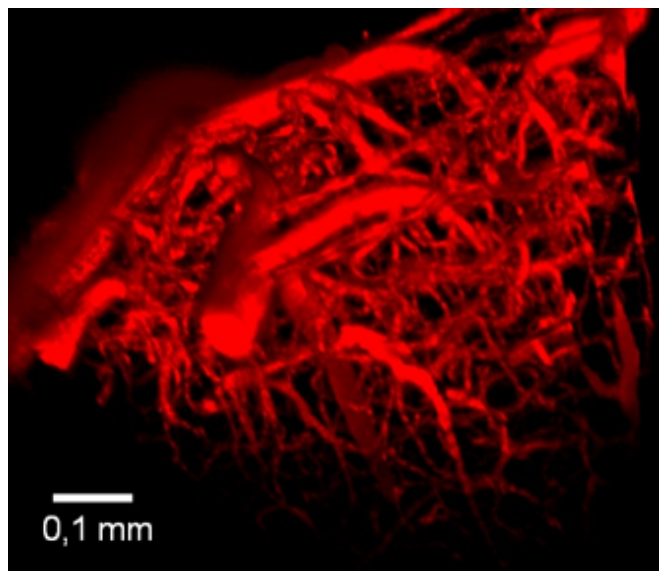


# Brilliant dye to probe the brain

2 May 2013



Credit : Image of the cerebral vascular system of a mouse obtained by 3D two-photon microscopy with addition of Lem-PHEA. B. van der Sanden and F. Appaix (Institut des Neurosciences de Grenoble)

To obtain very-high-resolution 3D images of the cerebral vascular system, a dye is used that fluoresces in the near infrared and can pass through the skin. The Lem-PHEA chromophore, a new product outclassing the best dyes, has been synthesized by a team from the Laboratoire de Chimie. Conducted in collaboration with researchers from the Institut des Neurosciences and the Laboratoire Chimie et Interdisciplinarité: Synthèse, Analyse, Modélisation, this work has been published online in the journal *Chemical Science*. It opens up significant prospects for better observing the brain and understanding how it works.

Different cerebral imaging techniques, such as two-[photon microscopy](#) or [magnetic resonance imaging](#) (MRI), contribute to our understanding of how the healthy or diseased brain works. One of their essential characteristics is their spatial

resolution, in other words the dimension of the smallest details observable by each technique. Typically, for MRI, this resolution is limited to several millimeters, which does not make it possible to obtain images such as the one below, whose resolution is of the order of a micrometer.

To obtain such images of the vascular system of a [mouse brain](#), it is necessary to use a fluorescent dye that combines several properties: luminescence in the near infrared, solubility in biological media, low cost, non-toxicity and suitable for 3D imaging (two-photon absorption). The researchers have developed a new product, Lem-PHEA, which combines these properties and is easy to synthesize. When injected into the blood vessels of a mouse, it has revealed details of the rodent's [vascular system](#) with previously unattained precision, thanks to a considerably enhanced fluorescence compared to "conventional" dyes (such as Rhodamine-B and cyanine derivatives). With Lem-PHEA, the researchers have obtained more contrasted images (in terms of brilliance) than with these standard dyes. Finally, the product is easily eliminated by the kidneys and no toxic residues have been found in the liver. These results pave the way for a better understanding of the working of the brain.

**More information:** Massin, J. et al. A water-soluble probe with near infra-red two-photon absorption and polarity-induced fluorescence for cerebral vascular imaging, *Chemical Science*, first published on-line on the 22 April 2013. [DOI: 10.1039/C3SC22325F](https://doi.org/10.1039/C3SC22325F)

Provided by CNRS

APA citation: Brilliant dye to probe the brain (2013, May 2) retrieved 13 December 2018 from <https://phys.org/news/2013-05-brilliant-dye-probe-brain.html>

*This document is subject to copyright. Apart from any fair dealing for the purpose of private study or research, no part may be reproduced without the written permission. The content is provided for information purposes only.*