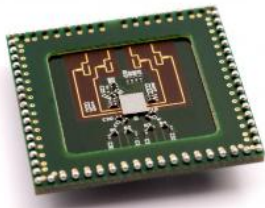


Imec demonstrates low power beamforming transceiver chipset for 60GHz multi-Gbit wireless communication

20 February 2013



Imec's low-power multi-Gbit 60GHz wireless module integrating a 40nm low-power chip with a 4-antenna array.

Imec, in collaboration with Panasonic Corporation, has presented at the IEEE International Solid-State Circuits Conference (ISSCC2013) a 60GHz radio transceiver chipset with low power consumption, that delivers high data rates over short distances. Imec drastically boosted the link budget of the system by introducing beamforming into the radio architecture. This multi-Gbit 60GHz chipset paves the way toward small size, low-power, low-cost, high-data rate solutions for battery-operated consumer devices, such as smart phones and tablets.

"Exchange of gigabytes of data between mobile devices requires a viable 60GHz technology that balances cost, size and [power consumption](#)," said Liesbet Van der Perre, program director of green radios at [imec](#), "Imec's prototype transceiver chipset enables multi-gigabit [wireless connectivity](#) for 'true mobile' devices thanks to its very low power consumption. More demanding applications

such as high-definition video streaming and gaming with low latency, proximity computing and wireless docking can also be built on our technology."

The prototype chipset consists of a receiver and a [transmitter chip](#), and these are based on a direct conversion architecture combined with an on-chip phased-array architecture. This makes it suited for implementation in 40nm low-power digital CMOS technology targeting low-cost, mass market production. The receiver and transmitter chips are implemented for 4 antenna paths, but they are easily extendible to more antenna paths thanks to the beamforming at analog baseband, rather than at RF. The chip size is kept low through the use of lumped components even at 60GHz, and very compact mm-wave CMOS layout techniques. The transmitter chip consumes 584mW and the receiver chip 400mW at 1.1V power supply. The chipset is integrated with a 4 antenna array in a compact module and demonstrated in a wireless link. With QPSK modulation, a data rate of 2.31Gbps is obtained, and with QAM16 modulation, a data rate of 4.62Gbps is achieved. No bit errors were found when transmitting packets of 32,768 symbols over a distance of 3.6m with QPSK modulation and 0.7m with QAM16 modulation. Thanks to the beamforming a 3dB scan angle range around 120° is achieved with 11dBi antenna gain.

The imec receiver and transmitter chips are designed for the IEEE802.11ad standard. The receiver and transmitter chipset has been tested with a IEEE 802.11ad PHY/MAC baseband chip developed by Panasonic, demonstrating the complete system for IEEE 802.11 applications. The beamforming functionality is also verified in these system tests.

Provided by IMEC

APA citation: Imec demonstrates low power beamforming transceiver chipset for 60GHz multi-Gbit wireless communication (2013, February 20) retrieved 7 December 2021 from <https://phys.org/news/2013-02-imec-power-beamforming-transceiver-chipset.html>

This document is subject to copyright. Apart from any fair dealing for the purpose of private study or research, no part may be reproduced without the written permission. The content is provided for information purposes only.