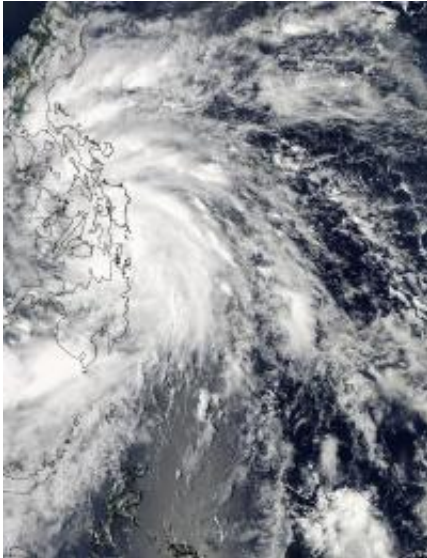


# NASA satellite shows the Tropical Storm Son-tinh's reach over Philippines

24 October 2012



On Oct. 24, 2012 at 0445 UTC (12:45 a.m. EDT) the MODIS instrument captured a visible image of Tropical Storm Son-tinh when its center was moving through the central Philippines. Credit: NASA Goddard MODIS Rapid Response Team

The latest tropical storm in the western North Pacific Ocean has already spread its clouds and showers over the Philippines, as seen in NASA satellite imagery. NASA's Aqua satellite captured an image as it flew over Tropical Storm Son-tinh today, Oct. 24.

On Oct. 24, 2012 at 0445 UTC (12:45 a.m. EDT) the Moderate Resolution Imaging Spectroradiometer (MODIS) instrument that flies aboard NASA's Aqua satellite captured a visible image of Tropical Storm Son-tinh. At the time of the image, Son-tinh's center was moving through the central Philippines, but its cloud cover extended north into Luzon. The image also showed that the strongest thunderstorms were east of the center, and were still over the Philippine Sea.

On Oct. 24 at 1500 UTC (11 a.m. EDT) [Tropical Storm](#) Son-tinh had maximum sustained winds near 35 knots (40.2 mph/64.8 kph). It was previously known as the low pressure area called "System 92W." Son-tinh was centered about 335 miles (385.5 mph/620.4 kph) southeast of Manila, Philippines and raining over much of the country. Son-tinh's center was near 10.7 North latitude and 125.2 East longitude and moving to the northwest at 17 knots (19.5 mph/31.4 kph).

The warnings continue in the Philippines as Son-tinh tracks west and toward the South China Sea. Public [storm warning](#) signal #1 was in effect on Oct. 24 (Eastern Daylight Time) for the for the Visayas province of Northern Samar, Antique, Iloilo, Southern Negros, Southern Cebu and Bohol; also for the Mindanao provinces of Surigao del Norte and Siargao Island. Public storm [warning signal](#) #1 was also in effect for the Luzon provinces of Camarines Sur, Albay, Sorsogon, Burias Island, Southern Quezon, Marinduque, Oriental and Occidental Mindoro, Calamian Group of Islands, Batangas, Lubang Island and Cuyo Island.

In addition, Public storm warning signal #2 was in effect for the Visayas provinces of Eastern and Western Samar; Leyte, Southern Leyte, Biliran Island, Camotes Island, Capiz, Aklan, Boracay Island, Northern Cebu, Bantayan Island and Northern Negros; and the Mindanao province of Dinagat Island. Public storm warning #2 was also in effect for the Luzon provinces of Masbate and Romblon.

The Joint Typhoon Warning Center expects Son-tinh to move northwest across the Philippine islands into the South China Sea and make a landfall on the Vietnamese coastline.

Provided by NASA's Goddard Space Flight Center

APA citation: NASA satellite shows the Tropical Storm Son-tinh's reach over Philippines (2012, October 24) retrieved 6 December 2022 from <https://phys.org/news/2012-10-nasa-satellite-tropical-storm-son-tinh.html>

*This document is subject to copyright. Apart from any fair dealing for the purpose of private study or research, no part may be reproduced without the written permission. The content is provided for information purposes only.*