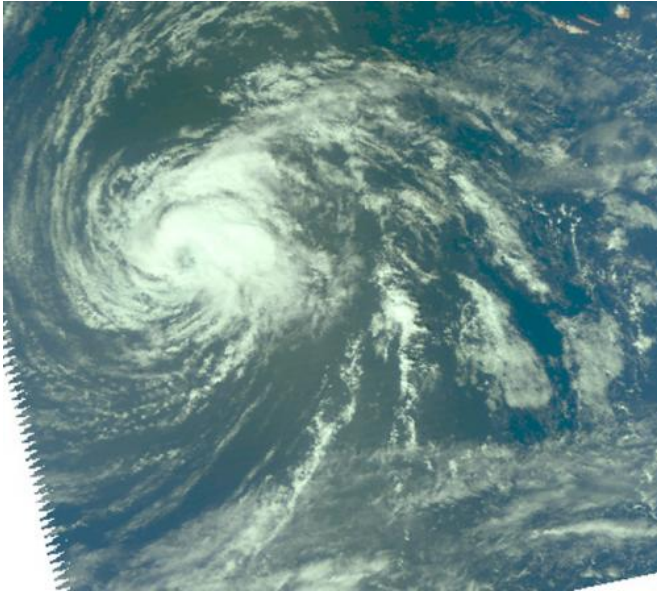


# Nadine bringing tropical storm conditions back to the Azores

3 October 2012



NASA's Aqua satellite passed over Tropical Storm Nadine on Oct. 2 at 11:57 a.m. EDT and saw the strongest thunderstorms north and east of the center of circulation. Near-infrared data, which appears more like a visible image, still showed an eye-like feature. Credit: NASA JPL/Ed Olsen

NASA satellites continue to gather data from Tropical Storm Nadine on its twenty-second day of life in the eastern Atlantic as it threatens the Azores again. NASA data has shown that wind shear is pushing the bulk of clouds and showers away from Nadine's center of circulation

A tropical storm warning is in effect for the Azores. The National Hurricane Center (NHC) expects tropical storm conditions associated with Nadine to spread over the northwestern Azores during the night hours on Wed. Oct. 3 and early Oct. 4.

NASA's Aqua satellite passed over [Tropical Storm Nadine](#) on Oct. 2 at 1517 UTC (11:57 a.m. EDT) and captured infrared and near-[infrared images](#) of

the storm using the Atmospheric Infrared Sounder (AIRS) instrument. AIRS data showed the strongest thunderstorms were located north and east of the center of circulation. Near-infrared data, which appears more like a visible image, still showed an eye-like feature in the storm's center, despite its tropical storm status.

On Oct. 3 at 11 a.m. EDT, Tropical Storm Nadine had [maximum sustained winds](#) near 50 mph (85 kmh). It was centered about 405 miles (650 km) west-southwest of the Azores near latitude 35.1 north and longitude 33.3 west. Nadine was moving to the east at 14 mph (22 kph), and had a minimum central pressure of 1000 millibars.

Some weakening is forecast during the next two days, but Nadine is expected to still be a tropical storm when the center moves near or over the Azores, according to the NHC.

Nadine is battling [wind shear](#) and cooler [sea surface temperatures](#), two factors that will make the storm transition into an extra-tropical cyclone. Wind shear is so strong over Nadine that the strongest thunderstorms and rainfall are pushed northeast of the center. The NHC forecast calls for Nadine to most likely become a post-tropical cyclone by Oct. 5 or sooner, before it becomes absorbed by a large extra-tropical cyclone.

Provided by NASA's Goddard Space Flight Center

APA citation: Nadine bringing tropical storm conditions back to the Azores (2012, October 3) retrieved 13 June 2021 from <https://phys.org/news/2012-10-nadine-tropical-storm-conditions-azores.html>

*This document is subject to copyright. Apart from any fair dealing for the purpose of private study or research, no part may be reproduced without the written permission. The content is provided for information purposes only.*