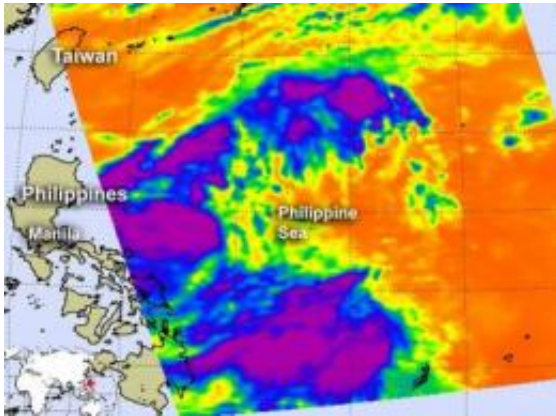


Tropical Depression Dokuri weaker, but still potent

28 June 2012



NASA's Aqua satellite passed over Tropical Storm Dokuri on June 27 on 0435 UTC (12:35 a.m. EDT). Infrared data from the AIRS instrument onboard, indicated the there were still some strong (purple) showers and thunderstorms within. Credit: Credit: NASA/JPL, Ed Olsen

Tropical Storm Dokuri weakened into a tropical depression today, but NASA infrared satellite imagery is still showing some areas of strong convection and thunderstorms in the storm and they're being pushed away from the center.

NASA's Aqua satellite passed over Tropical Storm Dokuri on June 27 on 0435 UTC (12:35 a.m. EDT). [Infrared data](#) from the Atmospheric Infrared Sounder (AIRS) instrument onboard indicated there were still some strong showers and thunderstorms within the system. Those cloud top temperatures were colder than -63 Fahrenheit (-52 Celsius), indicating strong uplift in the atmosphere, and thunderstorms within Dokuri that have the capability for heavy rainfall.

Infrared data shows a fully-exposed low level-circulation center. The strongest convection (rising air that creates thunderstorms that make up the system) are being pushed to the southwest due to strong northeasterly [vertical wind shear](#).

Warnings are up in the Philippines as Dokuri (known there as Dindo) continues to move north of Luzon today. Public storm [warning signal](#) #1 is in effect in Abra, Kalinga, Isabela, Ilocos Sur, Mt. Province, Ifugao, La Union, Benguet, Pangasinan, Nueva Vizcaya and Quirino. Public storm warning signal #2 is also in effect for Cagayan, Calayan Group of Islands, Babuyan Group of Islands, Batanes Group of Islands, Apayao, Ilocos Norte.

On June 28, 2012 at 1500 UTC (11 a.m. EDT), Tropical Storm Dokuri had [maximum sustained winds](#) near 35 knots. It was located approximately 335 nautical miles north of Manila, Philippines, near 20.4 North and 120.7 East. It was moving to the west-northwestward at 17 knots. The strongest convection and thunderstorms were located over northern Luzon at this time, and are moving off the northwestern coast of the Philippines.

Dokuri has weakened as it passes to the north of Luzon. Dokuri is expected to continue tracking west and make landfall near Hong Kong in two days.

Provided by NASA's Goddard Space Flight Center

APA citation: Tropical Depression Dokuri weaker, but still potent (2012, June 28) retrieved 27 September 2021 from <https://phys.org/news/2012-06-tropical-depression-dokuri-weaker-potent.html>

This document is subject to copyright. Apart from any fair dealing for the purpose of private study or research, no part may be reproduced without the written permission. The content is provided for information purposes only.