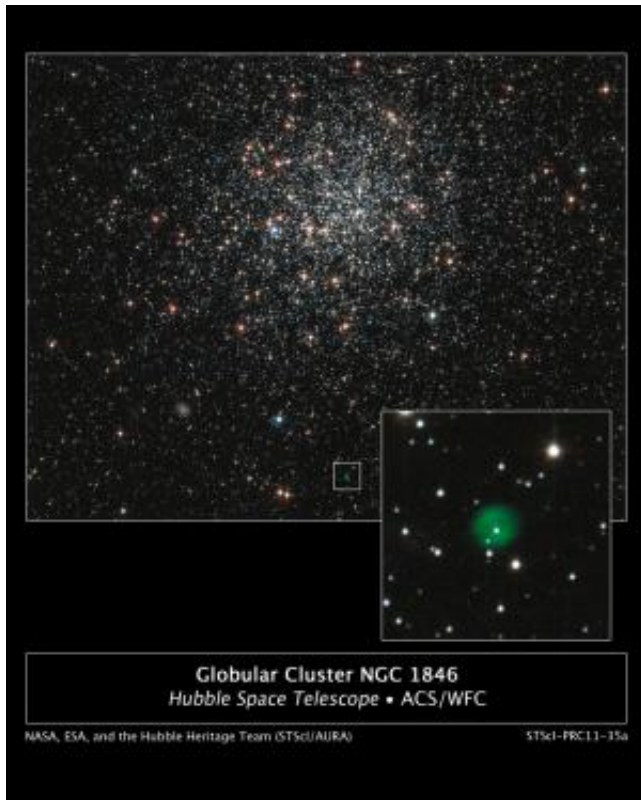


# Hubble finds stellar life and death in a globular cluster

22 November 2011



The most intriguing object, however, doesn't seem to belong in the cluster. It is a faint green bubble in the white box near the bottom center of the image. This so-called "[planetary nebula](#)" is the aftermath of the death of a star. The burned-out central star can be seen inside the bubble. It is uncertain whether the planetary nebula is a member of NGC 1846, or simply lies along the line of sight to the cluster. Measurements of the motion of the cluster stars and the planetary nebula's central star suggest it might be a cluster member.

This Hubble image was taken with the Advanced Camera for Surveys in January of 2006. The cluster was observed in filters that isolate blue, green, and infrared starlight. As a member of the [Large Magellanic Cloud](#), NGC 1846 is located roughly 160,000 light-years away in the direction of the constellation Doradus.

Provided by ESA/Hubble Information Centre

Credit: NASA and The Hubble Heritage Team (STScI/AURA) Acknowledgment: P. Goudfrooij (STScI)

(PhysOrg.com) -- A new NASA Hubble Space Telescope image shows globular cluster NGC 1846, a spherical collection of hundreds of thousands of stars in the outer halo of the Large Magellanic Cloud, a neighboring dwarf galaxy of the Milky Way that can be seen from the southern hemisphere.

Aging bright stars in the cluster glow in intense shades of red and blue. The majority of middle-aged stars, several billions of years old, are whitish in color. A myriad of far distant background galaxies of varying shapes and structure are scattered around the image.

APA citation: Hubble finds stellar life and death in a globular cluster (2011, November 22) retrieved 27 September 2020 from <https://phys.org/news/2011-11-hubble-stellar-life-death-globular.html>

*This document is subject to copyright. Apart from any fair dealing for the purpose of private study or research, no part may be reproduced without the written permission. The content is provided for information purposes only.*